

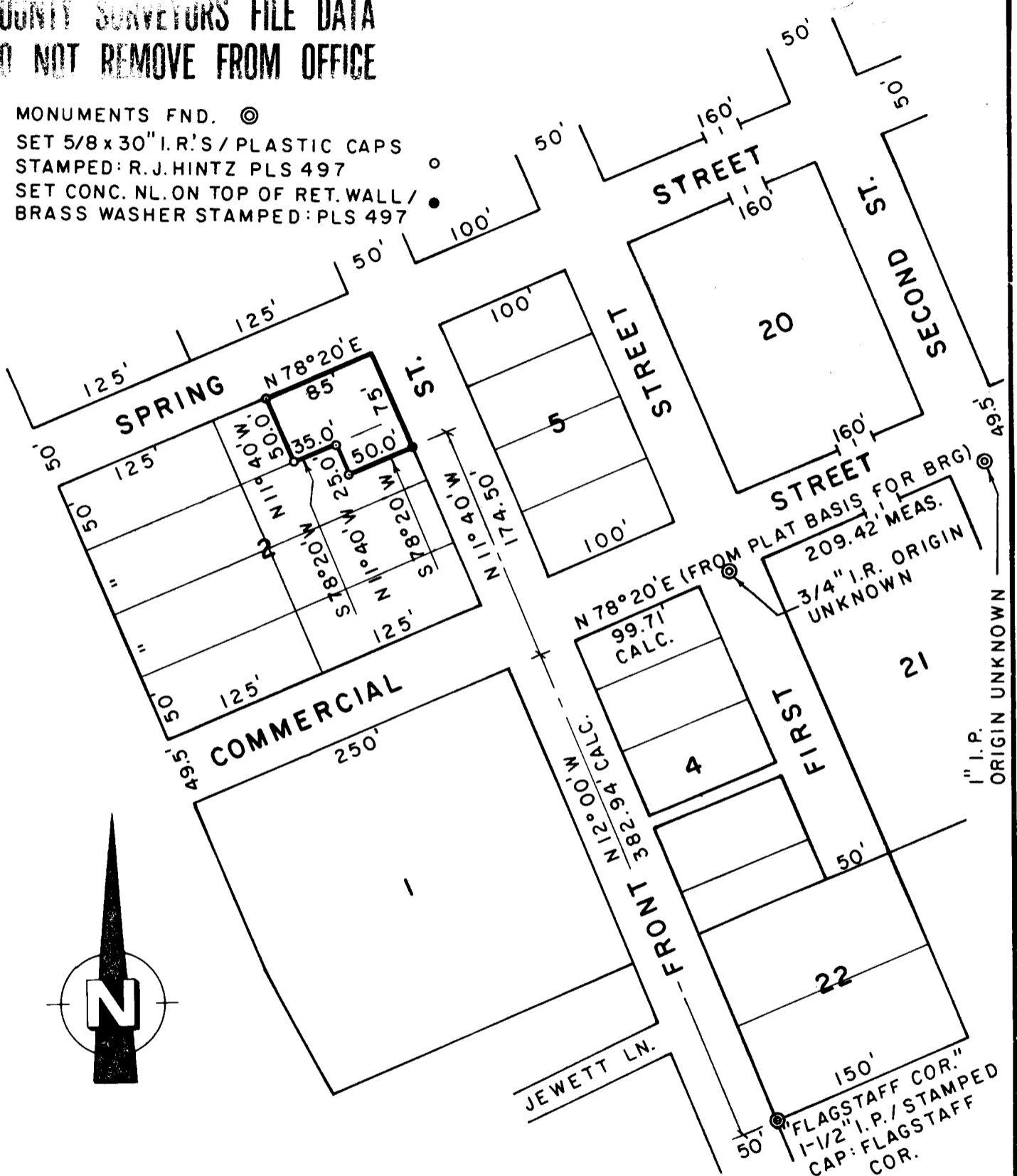
NARRATIVE

THE FOUND MONUMENTS ALONG THE SOUTH LINE OF COMMERCIAL STREET WERE USED AS A BASE LINE; THENCE S 78°20'W, 149.71 FEET (CS 58/267) TO THE CENTERLINE OF FRONT STREET. FROM THIS POINT, PLAT DISTANCES AND BEARINGS WERE USED TO ESTABLISH THE INDICATED CORNERS.

FILED *HL*
 23
 JUN 11 1991
 COUNTY SURVEYOR
 DOUGLAS COUNTY, OREGON
HP

**COUNTY SURVEYORS FILE DATA
 DO NOT REMOVE FROM OFFICE**

MONUMENTS FND. ©
 SET 5/8 x 30" I.R.'S / PLASTIC CAPS
 STAMPED: R.J.HINTZ PLS 497
 SET CONC. NL. ON TOP OF RET. WALL /
 BRASS WASHER STAMPED: PLS 497



PROPERTY SURVEY
 FOR
 GEORGE DEGMAN
 BLOCK 2, TOWN OF GARDINER
 SW 1/4 SE 1/4, SECTION 22
 T 21 S, R 12 W, W. M.
 SCALE: 1" = 100' JULY 1991

**REGISTERED
 PROFESSIONAL
 LAND SURVEYOR**

Richard J. Hintz

OREGON
 MAY 13, 1980
 RICHARD J. HINTZ
 497

RICHARD J. HINTZ
 1890 N. 14th ST.
 COOS BAY, OREGON