

FILED

OREGON CORNER RESTORATION FORM

Section 28 Township 28S Range 3W

SEP 27 1991

County DOUGLAS Date 8/9/91

COUNTY SURVEYOR  
DOUGLAS COUNTY, ORE.

Corner Designation

$\frac{1}{4}$  28-27  
4

- Condition Report Only
- Not Found
- Renewed
- Unrecorded
- Surveyed In
- Referenced Out

Previous Renewals/Surveys, etc. \_\_\_\_\_

Monument(s) & Accessories Found: (Condition and Source)

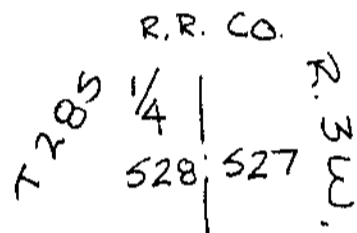
Found the two B.T. cut. The stumps had been treated and covered with metal.

36" FIR STUMP, BEARS S57°W, 37' FROM THE CORNER  
24" FIR STUMP, BEARS N31W, 20' FROM THE CORNER

THE MONUMENT HAD BEEN DESTROYED BY LOGGING.

Monument Detail

Sketch



L.S. 2354

Monument Set (Procedures and Description)

SET 5/8" x 48" Iron Rod with Aluminum Cap

New Accessories

No live tree available

Location & Comments

Corner is downhill from the 28-3-27 road in a recently logged clearcut

Compass Declination 20°

Firm/Agency Roseburg

Lumber Company

Address P.O. Box 1088

Roseburg, OR

Party Chief Felix Raddatz

Notes \_\_\_\_\_

Witness \_\_\_\_\_

Surveyor's Seal

REGISTERED  
PROFESSIONAL  
LAND SURVEYOR

*Mark F. Smalley*

OREGON  
JULY 26, 1988  
MARK F. SMALLEY  
2354

GOVERNMENT CORNER RESTORATION FORM

Township 28S Range 3W Sec. 27 County DOUGLAS

State OR Date 3/31/88 No. \_\_\_\_\_

Corner Designation

1/4 528 | 527

- Condition Report Only
- Not Found
- Renewed
- Unrecorded
- Surveyed In
- Referenced Out

Previous Renewals #137

MONUMENT DETAIL

Monument(s) Found: (Condition and Source)  
A STONE WAS FOUND SET ON  
END, THE UNCOVERED TOP BEING 4 INCHES  
BELOW GROUND AND MEASURING  
6" X 2" STONE NOT DISTURBED NO  
MARKS LOOKED FOR. (RECORD 10" X 12" X 16"  
BURIED 1 FT DEEP IN RENEWAL #137)  
ORIGINAL CORNER STONE.

N/A

Accessories Found:

ORIG. BT. AND BO. PER REN #137  
27" NOW 35" DIA. D. FIR WITH A FULLY HEALED SINGLE BLAZE,  
BEARS EAST, 7.7 FT (RECORD EAST, 6.6 IS A FACE MEASUREMENT).  
BT ALSO HAS A PK NAIL IN NOTCH ON THE WESTERLY BASE, SET PER  
REN. #137, BEARS S 84 1/2° E, 6.0 FT (REC. S 86° E, 6.0 FT).

29" NOW 28" DIA. D. FIR WITH A FULLY HEALED SINGLE BLAZE,  
BEARS N 37° W, 21.0 FT (RECORD N 34° W, 21.8 IS A SLOPE  
MEASUREMENT TO FACE) BT ALSO HAS A PK NAIL IN NOTCH  
ON SOUTHEASTERLY BASE, SET PER REN #137, BEARS N 38° W,  
20.1 FT (REC. N 35° W, 20.1 FT).

B.O. PER REN #137  
22" NOW 28" DIA. T. CEDAR WITH A BOAT SPIKE SET IN  
NOTCH ON THE SOUTHWEST BASE, BEARS N 40 1/2° E, 63.4 FT  
(RECORD A PK NAIL IN NOTCH, N 42° E, 63.4 FT).

32" NOW 33" DIA. D. FIR WITH A PK NAIL IN NOTCH ON THE  
SOUTHEAST BASE, BEARS S 56 1/2° W, 37.6 FT (RECORD  
S 58 1/2° W, 37.6 FT).

63/129-11.

RENEWAL

Monument Set (Procedure and Description)

NONE

DUE TO PROPOSED LOGGING IN FUTURE WE DID NOT SET A BRASS CAP MONUMENT.

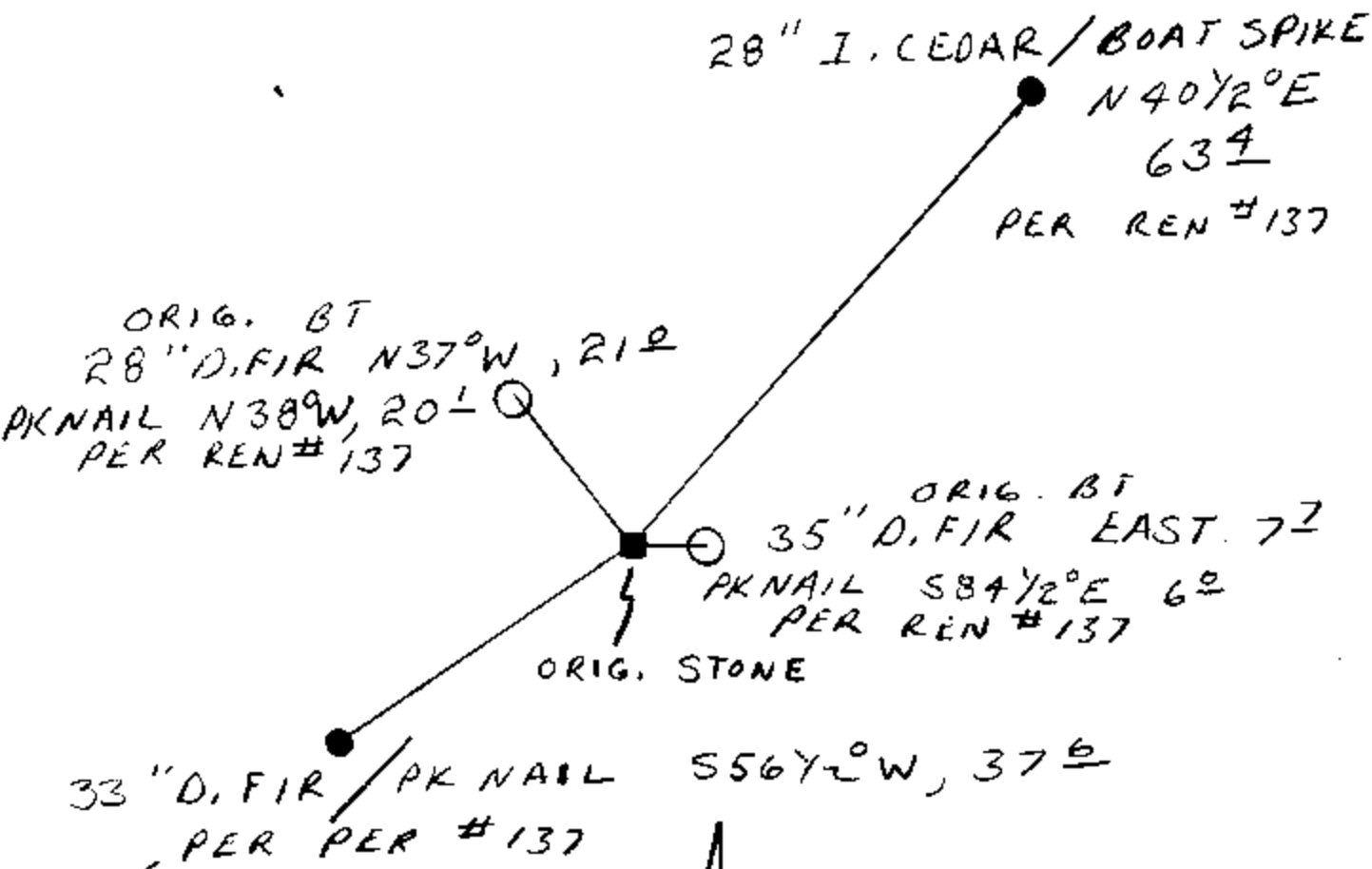
Monument Detail

N/A

New Accessories

NONE

Sketch of Monument, Accessories, and General Area



Location & Comments

CORNER LIES IN A PROPOSED FUTURE LOGGING AREA.  
CORNER LIES AT THE EDGE OF A SOUTHEASTERLY SLOPE AND A FLAT BENCH.

Comp. Declin. 18° EAST  
Agency DSCO  
Party Chief RANDALL W SMITH  
Notekeeper Randall W Smith  
Witnesses STEPHEN J FLAUSE

Address

Surveyor's Seal

REGISTERED  
PROFESSIONAL  
LAND SURVEYOR

*Larry E. Monrean*

OREGON  
JULY 13, 1979  
LARRY E. MONREAN  
#1830

T283 R3W  
28 | 27 NO CONSTRUCTION  
1/4 STARTED AS OF  
6/8: 69'

DATE: 8-10-78

- Condition Report Only
- Not Found
- Renewed
- Unrecorded
- Surveyed In
- Referenced Out

Previous Renewal #'s NONE

Monument(s) Found: (Condition and Source) FOUND: THE ORIGINAL CORNER MONUMENT, A GRANITE STONE, 10" X 12" X 16" IN SIZE, FIRMLY SET 11" IN THE GROUND, WITH FAINT "1/4" CHISELED ON THE WEST FACE

Accessories Found: (Condition and Source) AN ORIGINAL B.T., A 24" NOW <sup>34</sup> 27" D. FIR, ALIVE WITH WELL-HEALED SINGLE BLAZE, BEARS EAST 6 <sup>6</sup>/<sub>8</sub> FT.

AND AN ORIGINAL B.T., A 24" NOW 27" D. FIR, ALIVE WITH WELL-HEALED SINGLE BLAZE, BEARS N 34° W 21 <sup>8</sup>/<sub>8</sub> FT.

#137X

DATE: 8-10-78

T285 R3W

28 | 27  
1/4

- Condition Report Only
- Not Found
- Renewed
- Unrecorded
- Surveyed In
- Referenced Out

Previous Renewal #'s NONE

Monument(s) Found: (Condition and Source) FOUND: THE  
ORIGINAL CORNER MONUMENT, A GRANITE STONE, 10" X 12" X 16" IN  
SIZE, FIRMLY SET 11" IN THE GROUND, WITH FAINT "1/4" CHISELED  
ON THE WEST FACE,

Accessories Found: (Condition and Source) AN ORIGINAL B.T., A 24"  
<sup>34</sup> NOW ~~27~~ D. FIR, ALIVE WITH WELL HEALED SINGLE BLAZE, BEARS  
EAST 6 <sup>6</sup> FT.

AND AN ORIGINAL B.T., A 24" NOW 27" D. FIR, ALIVE WITH WELL-HEALED  
SINGLE BLAZE, BEARS N 34° W 21 <sup>8</sup> FT.

#137X

DATE: 8-10-78

T2B5 R3W

28 | 27  
1/4

- Condition Report Only
- Not Found
- Renewed
- Unrecorded
- Surveyed In
- Referenced Out

Previous Renewal #'s NONE

Monument(s) Found: (Condition and Source) FOUND: THE ORIGINAL CORNER MONUMENT, A GRANITE STONE 10" X 12" X 16" IN SIZE, FIRMLY SET 11" IN THE GROUND, WITH FAINT "1/4" CHISELED ON THE WEST FACE,

Accessories Found: (Condition and Source) AN ORIGINAL B.T., A 24" NOW <sup>34</sup> 27" D. FIR, ALIVE WITH WELL HEALED SINGLE BLAZE, BEARS EAST 6 <sup>6</sup> FT..

AND AN ORIGINAL B.T., A 24" NOW 27" D. FIR, ALIVE WITH WELL-HEALED SINGLE BLAZE, BEARS N 34° W 21 <sup>8</sup> FT..

#137 X

RENEWAL

Monument Set: (Procedure and Description) DUE TO PROPOSED  
LOGGING IN THIS AREA, WE BURY THE CORNER STONE ONE FOOT DEEP  
AT THE CORNER POINT. NO OTHER CORNER MONUMENT SET.

New Accessories: (Description) WE SET THE FOLLOWING BEARING  
OBJECTS: A "P-K" MASONRY NAIL SET IN A NOTCH ALONG THE SE  
BASE OF A 32" D. FIR BEARS  $S 58\frac{1}{2}^{\circ} W$   $37\frac{6}{10}$  FT.,  
A "P-K" MASONRY NAIL SET IN A NOTCH ALONG THE SE BASE OF THE  
ORIGINAL NW BEARING TREE, A 27" D. FIR, BEARS  $N 35^{\circ} W$   $20\frac{1}{10}$  FT.,  
A "P-K" MASONRY NAIL SET IN A NOTCH ALONG THE SW BASE  
(CONTINUED ON PAGE 2)

Location and Comments:	_____	Compass Declination
	_____	Agency
	_____	Party Chief
	_____	Notekeeper
	_____	Witnesses
	_____	
	_____	

CONTINUED FROM PAGE 4

DATE: 8-10-78

T 28S R3W

28 | 27

1/4

- Condition Report Only
- Not Found
- Renewed
- Unrecorded
- Surveyed In
- Referenced Out

Previous Renewal #'s NONE

Monument(s) Found: (Condition and Source) \_\_\_\_\_

~~\_\_\_\_\_~~  
~~\_\_\_\_\_~~  
~~\_\_\_\_\_~~  
~~\_\_\_\_\_~~  
~~\_\_\_\_\_~~  
~~\_\_\_\_\_~~  
~~\_\_\_\_\_~~  
~~\_\_\_\_\_~~  
~~\_\_\_\_\_~~  
~~\_\_\_\_\_~~

Accessories Found: (Condition and Source) \_\_\_\_\_

~~\_\_\_\_\_~~  
~~\_\_\_\_\_~~  
~~\_\_\_\_\_~~  
~~\_\_\_\_\_~~  
~~\_\_\_\_\_~~  
~~\_\_\_\_\_~~  
~~\_\_\_\_\_~~  
~~\_\_\_\_\_~~

RENEWAL

Monument Set: (Procedure and Description)

New Accessories: (Description) OF A 22" I. CEDAR BEARS

N 42° E 63<sup>4</sup> FT.,

AND A "P-K" MASONRY NAIL SET IN A NOTCH ALONG THE WESTERLY

BASE OF THE ORIGINAL EAST BT, A 34" D. FIR BEARS S 86° E 6° FT..

Location and Comments:

20° EAST

DOUGLAS CO. SURVEYOR'S OFFICE

GARY J. LANGRISH

Gary J. Langrish

STEPHEN J. FLAUSE

Compass Declination

Agency

Party Chief

Notekeeper

Witnesses

OK  
*[Signature]*

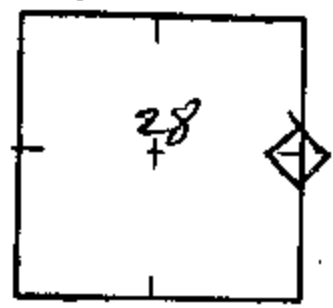
Section 28

Twp 28 S

Rge 3

W

Date: 7-10-78



How was corner identified? Original DF BT's and stone set  
in ground

Condition of corner: Very good, but this area will be logged in  
next 5 years.

Best route to reach corner: See enclosed ~~contour~~ contour map  
1" = 1000' scale. Go to P-line and to P9405  
then go East down a spur ridge 250' from P-line to cor.

Quadrant	NE	NW	<del>SE</del> E	<del>SW</del> South
Species & Size			DF 32"	DF 32"
Dist. & Bearing			101ks E	
Condition of Scribe			Healed over	Healed over
Original or Resurvey			Orig	Orig
Appearance of B.T.			Very good	Very good
Tags, Marks, etc.			BT Tag	BT Tag

Other Remarks:  
I flagged corner  
with BT's with  
Orange. BT tags  
signed by CS in  
9/62.

C.S. 63/129 -11

Signed William R. May <sup>RLM</sup>

Rd. NOT BUILT GO  
AS OF 11-18-81

DATE: 8-10-78

TZBS R3W

28 | 27  
1/4

- Condition Report Only
- Not Found
- Renewed
- Unrecorded
- Surveyed In
- Referenced Out

Previous Renewal #'s NONE

Monument(s) Found: (Condition and Source) FOUND: THE ORIGINAL CORNER MONUMENT, 1 GRANITE STONE, 10" X 12" X 16" IN SIZE, FIRMLY SET 11" IN THE GROUND, WITH PAINT "1/4" CHISELED ON THE WEST FACE,

Accessories Found: (Condition and Source) AN ORIGINAL B.T., A 24" 35" 34" NOW 27" D. FIR, ALIVE WITH WELL HEALED SINGLE PLICE BEARS,

S89° EAST 6<sup>6</sup> FT. TO FACE 7<sup>2</sup> TO CNT.

AND AN ORIGINAL B.T., A 24" NOW 27" D. FIR, ALIVE WITH WELL-HEALED SINGLE PLICE BEARS N 34° W 21<sup>8</sup> FT. SLOPE MEASUREMENT FACE N 37° W (21° TO CNT.)

1910

#137X

Page 1 of 2

C.S. File No. ~~63/129-11~~

STONE SET ON END  
6" x 2" TIP 4" BELOW GROUND

RENEWAL

Monument Set: (Procedure and Description) Due TO PROPOSED

LOGGING IN THIS AREA WAS BURY THE CORNER STONE ONE FOOT DEEP  
AT THE CORNER POINT. NO OTHER CORNER MONUMENT SET.

New Accessories: (Description) WE SET THE FOLLOWING LEAKING

OBJECTS: 3 "P-K" MASONRY NAIL SET IN A NOTCH ALONG THE SE  
BASE OF A 32" D FIRE BEARS 556 1/2" W 37 5/8" 1.31 20

A "P-K" MASONRY NAIL SET IN A NOTCH ALONG THE SE BASE OF THE  
ORIGINAL NW BEARING TREE A 27" D FIRE BEARS N 38 2/3 W 20 1/4 1.05

A "P-K" MASONRY NAIL SET IN A NOTCH ALONG THE SW BASE  
BOAT SPIKE (continued on page 2)  
Location and Comments:

Compass Declination  
Agency  
Party Chief  
Notkeeper  
Witnesses

10 x 12 x 10

RENEWAL

Monument Set: (Procedure and Description)

~~LOGGING IN THIS AREA WAS BURY THE CORNER STONE ONE FOOT DEEP  
AT THE CORNER POINT. NO OTHER CORNER MONUMENT SET.~~

New Accessories: (Description) OF A 22" I. CORR. BEARS

N 42° E 63 1/4 FT. N 40 1/2"  
AND A "P-K" MASONRY NAIL SET IN A NOTCH ALONG THE WESTERN

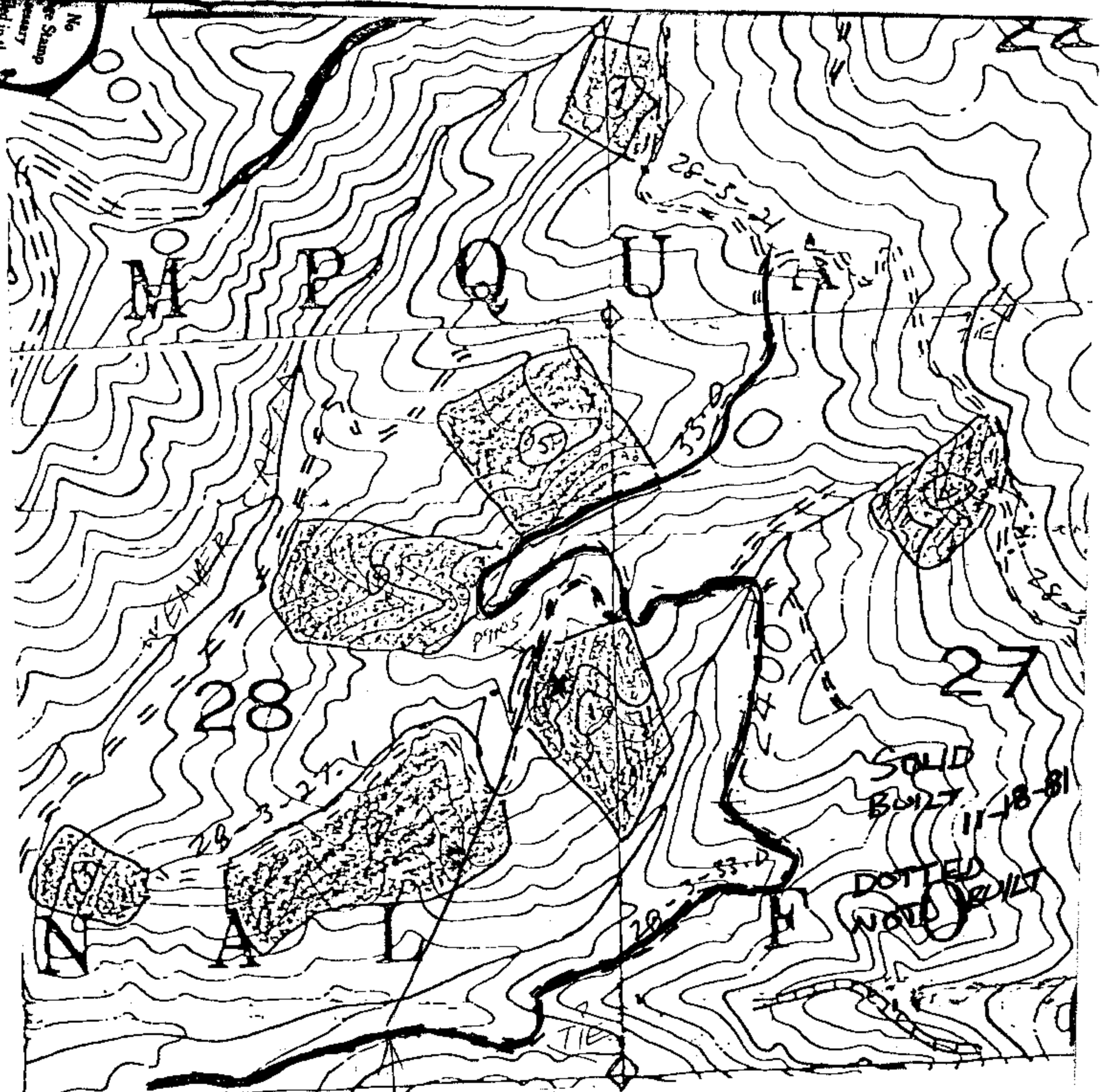
BASE OF THE ORIGINAL EAST BT A 34" D FIRE BEARS 586° E 6 1/2 FT.  
584 1/2° E

Location and Comments: 20° EAST  
DUGGINS CO. SURVEYOR'S OFFICE

Compass Declination  
Agency  
Party Chief  
Notkeeper  
Witnesses

OK  
[Signature]

No  
Stamp  
End in the  
State



SOLID  
BUILT 11-18-81

DOTTED  
NOT BUILT

End of BLM 28-3-33. O.R.D.  
POB of proposed new construction

C.S. File No. ~~63/129-11~~  
59/30

CLEAVER CRK RD 29-3-16  
TO WHITE ROCK  
SPUR RD ON RT

C.S. 63/129-11

