

M111-46

FILED

JR

FEB 21 1991

COUNTY SURVEYOR
DOUGLAS COUNTY, OREGON

OREGON CORNER RESTORATION FORM

Section 29 Township 21S Range 4W

County Douglas Date 2/04/91

Corner Designation

Center-North 1/16 corner

- Condition Report Only
- Not Found
- Renewed
- Unrecorded
- Surveyed In
- Referenced Out

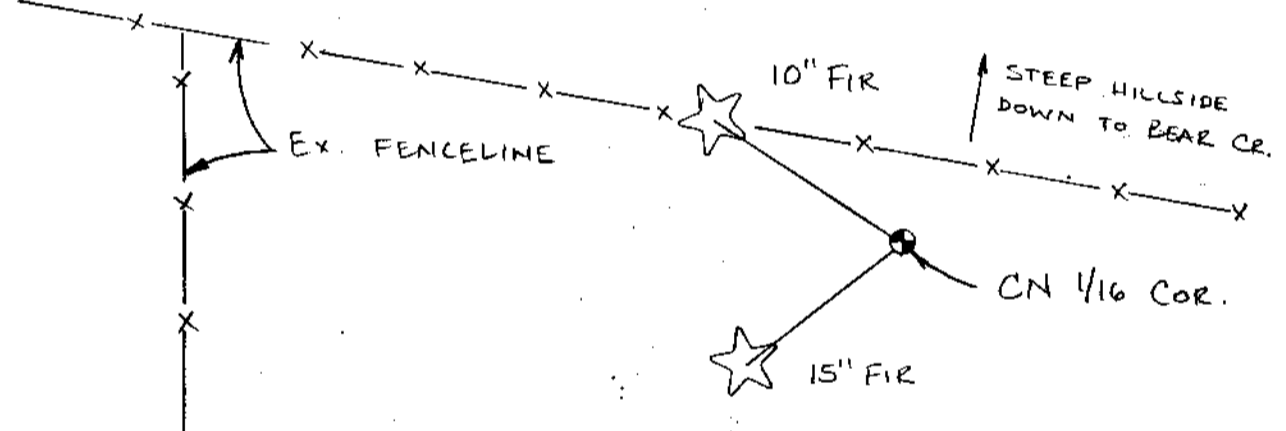
Previous Renewals/Surveys, etc. This corner was calculated in C.S. M80-2B but not set

Monument(s) & Accessories Found: (Condition and Source)

None

Monument Detail

Sketch (1" = 20')



Monument Set (Procedures and Description)

Set 5/8" x 30" rebar with red plastic cap imprinted "Geomax PLS 2424" by random traverse

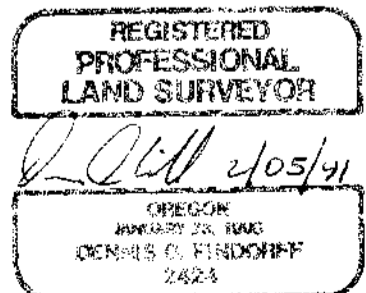
New Accessories

- I face blazed a 10" Fir at breast height bearing N58°W 23.2' from corner
- I face blazed a 15" Fir at breast height bearing S52°W 21.0' from corner
- I painted blazes orange

Location & Comments

Compass Declination 18°E
 Firm/Agency Geomax of Oregon, Inc.
 Address 325 S 6th St Cottage Grove, OR 97424
 Party Chief D. Findorff
 Notes D. Findorff
 Witness _____

Surveyor's Seal



C.S. File No. 63/29-4