

M 111-46

FILED

JR

FEB 21 1991

OREGON CORNER RESTORATION FORM

Section 29 Township 21S Range 4W
County Douglas Date 1/09/91

COUNTY SURVEYOR
DOUGLAS COUNTY, OR

Corner Designation

Center 1/4 corner

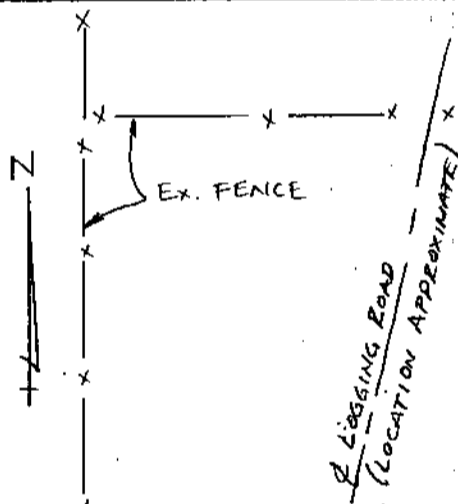
- Condition Report Only
- Not Found
- Renewed
- Unrecorded
- Surveyed In
- Referenced Out

Previous Renewals/Surveys, etc. C.S. M79-7 by Ronald A. Quimby, 1654 LS

Monument(s) & Accessories Found: (Condition and Source)

Found 5/8" rebar without cap at corner location, found 12" Fir B.T. with blaze
overgrown bearing N14°W 6.3', found 6" Fir B.T. with blaze overgrown
bearing S46°E 14.5'

Monument Detail



Sketch (1"=20')

Monument Set (Procedures and Description)

No monument set

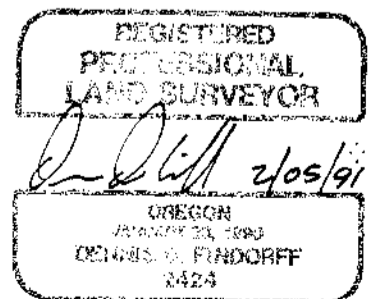
New Accessories

I face blazed an 8" Fir at breast height bearing N62°E 17.7' from corner,
I face blazed a 6" Fir at breast height bearing S24°W 17.0' from corner

Location & Comments

I painted New and Old Compass Declination 18°E
blazes red and painted Firm/Agency Geomax of
red bands around all Oregon, Inc.
B.T.s Address 325 S 6th St
Cottage Grove, OR 97424
 Party Chief D. Findorff
 Notes D. Findorff
 Witness M. Hollemon

Surveyor's Seal



#158
X