

FILED

DEC 17 1990

OREGON CORNER RESTORATION FORM

Section 27 Township 26S Range 8W

County DOUGLAS Date 7/90

COUNTY SURVEYOR
DOUGLAS COUNTY, ORE.

Corner Designation

CN 1/16

- Condition Report Only
- Not Found
- Renewed
- Unrecorded
- Surveyed In
- Referenced Out

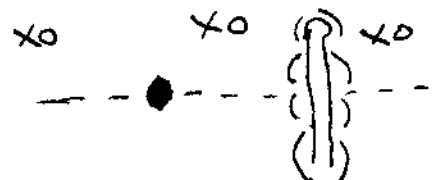
Previous Renewals/Surveys, etc. _____

Monument(s) & Accessories Found: (Condition and Source)

CORNER IS A 1/2" IRON PIPE WITH PLASTIC CAP (LS 1032)
 26" D.F. STUMP N 32 1/2° W 12.1 FT TO "W" NAIL BELOW FACE, SCRIBING
 VISIBLE, AND WEXCO B.T. TAG.
 1 1/2" D.F. S 35° W 35.7 FT TO "W" NAIL BELOW FACE, SCRIBING
 VISIBLE ON HIGH FACE, AND WEXCO B.T. TAG

Monument Detail

Sketch



Monument Set (Procedures and Description)

New Accessories

PAINTED FACES AND WROTE B.T. ON TREE TRUNKS OF B.T.'S
 WITH FLOOR ORANGE PAINT.

Location & Comments

CORNER LIES ON NORTH- WEST SLOPE WITH CLEARCUT TO THE NORTH. IT IS APPROX 260 FT WEST OF RIDGE TOP AND ROAD.
 Compass Declination 19 1/2°
 Firm/Agency LOWE ROCK TIMBER COMPANY
 Address P.O. Box 1127
 Party Chief KEN HOFFINE
 Notes _____
 Witness GARY ANGIOLINI

Surveyor's Seal

REGISTERED
PROFESSIONAL
LAND SURVEYOR

Ken W Hoffine

OREGON
JULY 16, 1987
KEN W. HOFFINE
2291

X