

FILED

sh

DEC 13 1990

OREGON CORNER RESTORATION FORM

Section 1 Township 23S Range 6W

County DOUGLAS Date 3/90

COUNTY SURVEYOR  
DOUGLAS COUNTY, ORE.

Corner Designation

WITNESS CORNER  
1/4 COR  
S1  
—●—  
S12

- Condition Report Only
- Not Found
- Renewed
- Unrecorded
- Surveyed In
- Referenced Out

Previous Renewals/Surveys, etc. \_\_\_\_\_

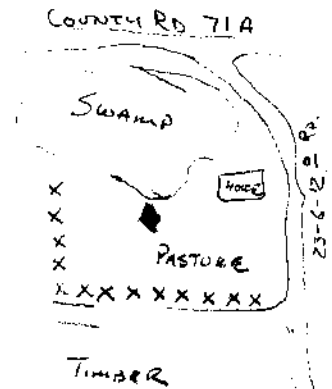
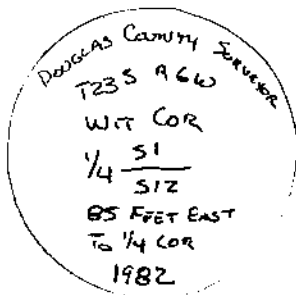
Monument(s) & Accessories Found: (Condition and Source)

See # 16

- CORNER IS A COUNTY BRASS CAP IN GOOD CONDITION
- 43" D.F. BEARS N51°W 312<sup>±</sup> FT; WELL HEALED FACE AND THREE B.T. TAGS
- 20" D.F. BEARS N87°W 165<sup>±</sup> FT; WELL HEALED FACE AND B.T. TAG
- 16" D.F. BEARS S55°W 210<sup>±</sup> FT; WELL HEALED FACE AND B.T. TAG
- FENCE POST AND WITNESS CORNER SIGN BLAD EAST 5<sup>±</sup> FT

Monument Detail

Sketch



Monument Set (Procedures and Description)

New Accessories

PAINTED FACES AND WROTE B.T. ON TREE TRUNKS OF B.T.S. WITH FLOUR ORANGE PAINT

Location & Comments

WITNESS CORNER LIES ON NORTH BANK OF PASTURE AND SOUTH EDGE OF SWAMP

Compass Declination 19<sup>±</sup>

Firm/Agency LOWE ROCK TIMBER COMPANY

Address P.O. BOX 1127 ROSEBURG

Party Chief KEN HOFFINE

Notes \_\_\_\_\_

Witness GARY ANGILOTT

Surveyor's Seal

REGISTERED PROFESSIONAL LAND SURVEYOR

*Ken W Hoffine*

OREGON  
JULY 16, 1987  
KEN W. HOFFINE  
2291