

FILED

sh

OREGON CORNER RESTORATION FORM

DEC 13 1990

Section 22 Township 23S Range 4W

County DOUGLAS Date 4/90

COUNTY SURVEYOR
DOUGLAS COUNTY, ORE.

Corner Designation

T23S
S15 | S14
S22 | S23
R4W

- Condition Report Only
- Not Found
- Renewed
- Unrecorded
- Surveyed In
- Referenced Out

Previous Renewals/Surveys, etc. _____

Monument(s) & Accessories Found: (Condition and Source)

CORNER IS A COUNTY BRASS CAP 0.7 FT ABOVE GROUND BENT NORTH WITH
NAILS & IRON ALONGSIDE

20" D.F. BEARS N 55° E 21.6 FT, WELL HEALED FACE; BLM AND WEXCO B.T. TAGS

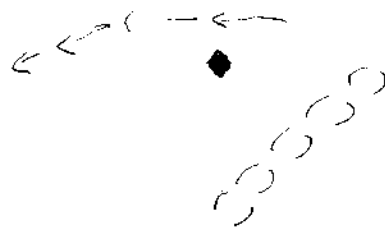
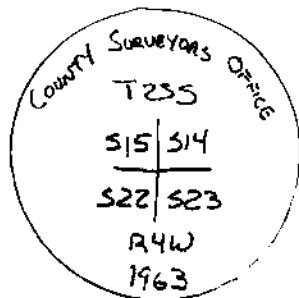
16" D.F. BEARS S 63° E 10.4 FT, WELL HEALED FACE; BLM AND WEXCO B.T. TAGS

12" D.F. BEARS N 47° W 12.2 FT, WELL HEALED FACE; BLM AND WEXCO B.T. TAGS

10" D.F. BEARS S 80° W 5.4 FT, WELL HEALED FACE AND BLM B.T. TAG

Monument Detail

Sketch



Monument Set (Procedures and Description)

New Accessories

PAINTED FACES AND WROTE B.T. ON TREE TRUNKS OF B.T.'S
WITH FLUOR. ORANGE PAINT

Location & Comments

CORNER LIES ON 70%
N.W. SLOPE APPROX
1 CHAIN SOUTH OF DRAW
BEARING EAST

Compass Declination 14 1/2
Firm/Agency LONG ROCK
TIMBER COMPANY
Address P.O. Box 1127
ROXBURG
Party Chief KEN HOFFINE
Notes _____
Witness GARY AUGOLET

Surveyor's Seal



Ken W Hoffine

