

OREGON CORNER RESTORATION FORM

JAN 18 1991

Section 4 Township 20S Range 10W

COUNTY SURVEYOR
DOUGLAS COUNTY, ORE.

County Douglas Date 5-29-90

CORNER DESIGNATION

N.E. Corner
Section 4

- Condition Report Only
- Not Found
- Renewed
- Unrecorded
- Surveyed In
- Referenced Out

Previous Renewals/Surveys, etc. G.L.O. Survey by Nathaniel Martin in 1892.
G.L.O. Survey by Fred Mensch in 1922. G.L.O. Survey by Tom Tillman in 1952.
Survey M69-78 by Richard Hintz in 1978. Survey M85-46 by Donald Peel in 1980.
 Monument(s) & Accessories Found: (Condition and Source)

Found 1952 G.L.O. Brass Cap set firmly in the ground.

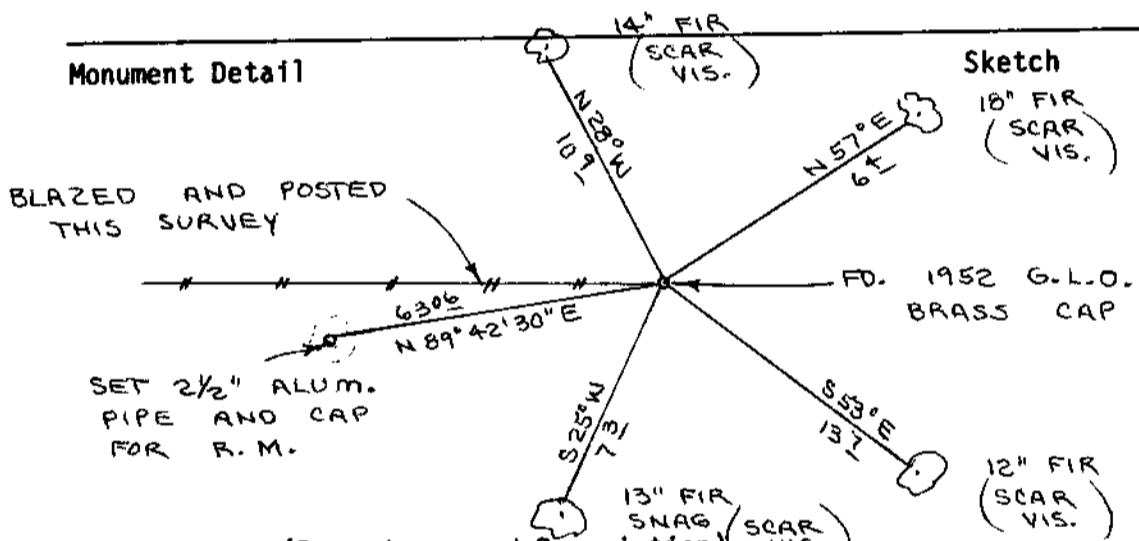
12" Fir . S53E, 13.7' (Scar Vis.), 1952 BT. Record S54E, 14.2'

13" Fir Snag, S25W, 7.3' (Scar Vis.), 1952 BT. Record S22W, 6.6'

14" Fir . N28W, 10.9' (Scar Vis.), 1952 BT. Record N28W, 11.2'

18" Fir . N57E, 6.4' (Scar Vis.), 1952 BT. Record N68E, 6.6'

Monument Detail



Monument Set (Procedures and Description)

Set 2 1/2" x 30" Aluminum pipe and cap for reference monument to section corner.
1952 G.L.O. Brass Cap bears N89°42'30" E, 63.06 feet from reference monument.

New Accessories

Set U.S. Forest Service orange fiberglass post beside 1952 brass cap.
Painted all bearing trees red.

Location & Comments

Compass Declination 20 1/2

Firm/Agency Roberts

Surveying Inc.

Address 29 West 29th St.

Eugene, Oregon 97405

Party Chief Ted Baker

Notes Harvey Christensen

Witness _____

Surveyor's Seal

REGISTERED
PROFESSIONAL
LAND SURVEYOR

Les Roberts

OREGON
AUGUST 29, 1975
L. D. ROBERTS
1039

#125 T20-10 ✓
#49 T19-10 ✓