

OREGON CORNER RESTORATION FORM

JAN 18 1991

Section 4 Township 20S Range 10W

COUNTY SURVEYOR
DOUGLAS COUNTY, OREGON

County Douglas Date 06-01-90

CORNER DESIGNATION

W-W-W- 1/256 Corner
Section 4

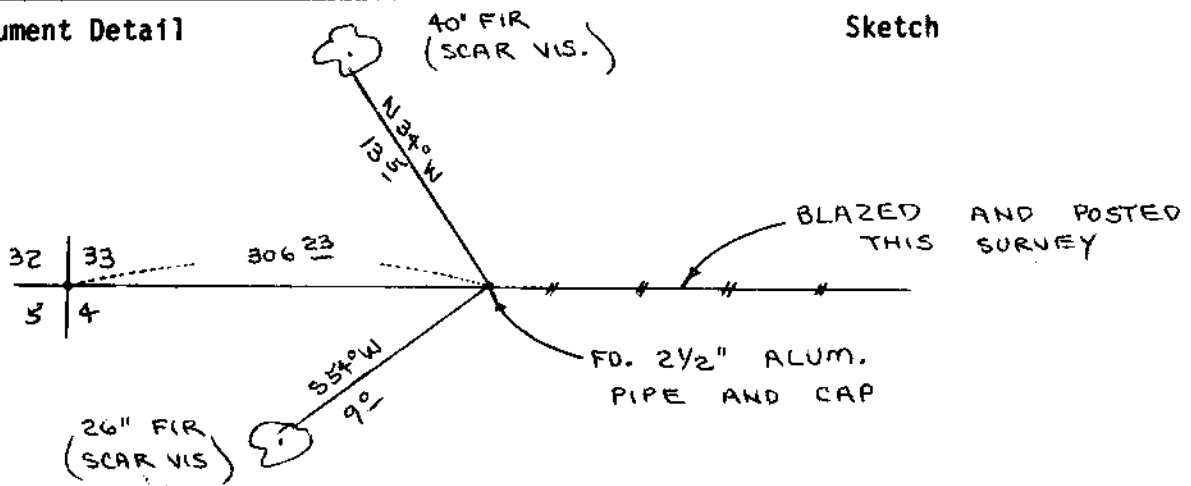
- Condition Report Only
- Not Found
- Renewed
- Unrecorded
- Surveyed In
- Referenced Out

Previous Renewals/Surveys, etc. G.L.O. Survey by Nathaniel Martin in 1892.
G.L.O. Survey by Fred Mensch in 1922. G.L.O. Survey by Tom Tillman in 1952.
Survey M69-78 by Richard Hintz in 1978, Survey M85-46 by Donald Peel in 1980.
 Monument(s) & Accessories Found: (Condition and Source)

Found 2 1/2" aluminum pipe and cap as set by Donald Peel in survey M85-46.
26" Fir, S54W, 9.0' (Scar Vis.), 1980 BT. Record S54W, 9.1'
40" Fir, N34W, 13.5' (Scar Vis.), 1980 BT. Record N34W, 13.6'

Monument Detail

Sketch



Monument Set (Procedures and Description)

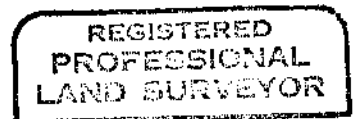
New Accessories

Set U.S. Forest Service orange fiberglass post beside brass cap.
Painted all bearing trees red.

Location & Comments

Surveyor's Seal

Compass Declination 20 1/2
 Firm/Agency Roberts
Surveying Inc.
 Address 29 West 29th St.
Eugene, Oregon 97405
 Party Chief Ted Baker
 Notes _____
 Witness Harvey Christensen



L. D. Roberts
 OREGON
 AUG. 22, 1975
 L. D. ROBERTS
 1039