

M111-10

FILED

DEC 11 1990

OREGON CORNER RESTORATION FORM

Section 11 Township 21S Range 11W

County Douglas Date 02-28-90

COUNTY SURVEYOR
DOUGLAS COUNTY, ORE.

CORNER DESIGNATION

West 1/4 Corner
Section 11

- Condition Report Only
- Not Found
- Renewed
- Unrecorded
- Surveyed In
- Referenced Out

Previous Renewals/Surveys, etc. 1891 G.L.O. Survey by William Theil, Survey RM3-48 by Shaner Engineering in 1981 and Survey M104-43 by Eugene Wobbe in 1987.

Monument(s) & Accessories Found: (Condition and Source)

Found iron pipe and brass cap as set by Shaner Engineering in Survey RM3-48.

26" Cedar Snag, N03W, 24.4' (No Marks), 1891 BT. Record N03 1/2 W, 24.4'

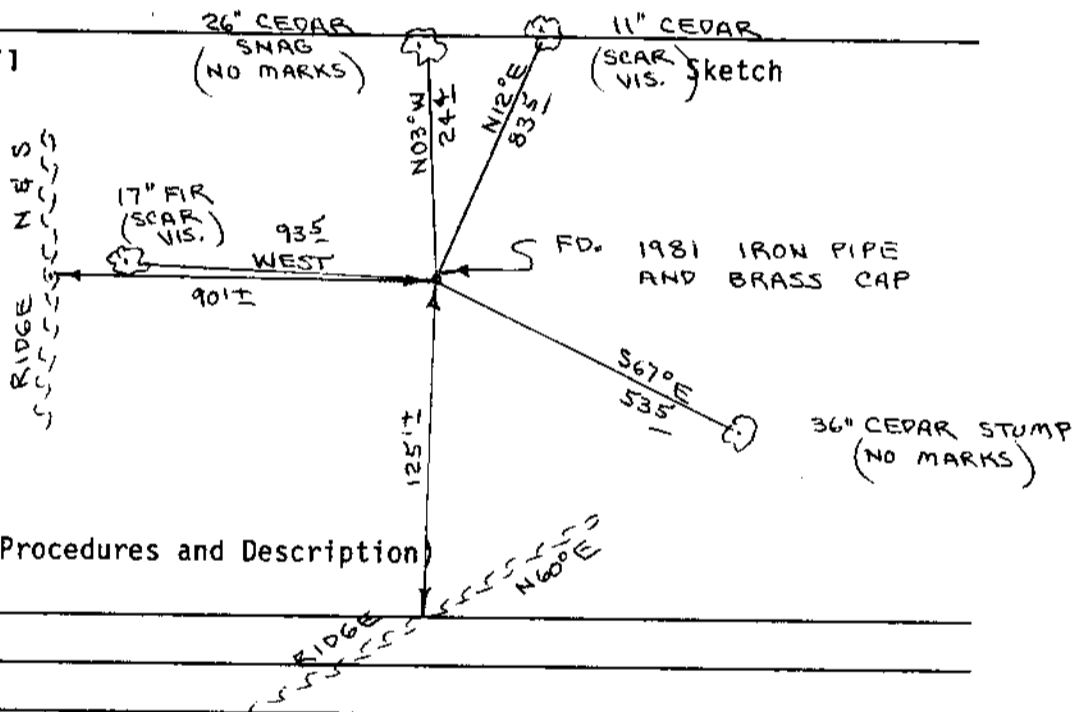
36" Cedar Stump, S67E, 53.5' (No Marks), 1891 BT. Record S71E, 55.4'

11" Cedar, N12E, 83.5' (Scar Vis.), 1981 BT. Record N12E, 84.0'

17" Fir, West, 93.5' (Scar Vis.), 1981 BT. Record West, 93.1'

Found 60" aluminum post, with land monument survey sign attached to, beside iron pipe.

Monument Detail



Monument Set (Procedures and Description)

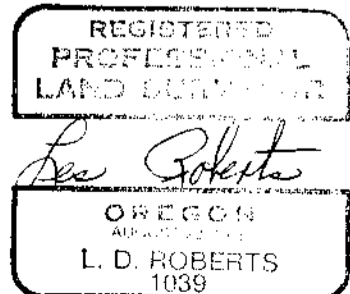
New Accessories

Location & Comments

Corner lies on East slope about 90 East of North-South spur and about 125' North of small ridge. Ridge bears N60E and S60W.

Compass Declination 20 1/2
 Firm/Agency Roberts Surveying Inc.
 Address 29 West 29th St. Eugene, Oregon 97405
 Party Chief Les Roberts
 Notes Ted Baker
 Witness Harvey Christensen

Surveyor's Seal



J.S. FILE NO. 63/126-9