

M111-10

FILED

DEC 11 1990

OREGON CORNER RESTORATION FORM

Section 11 Township 21S Range 11W

County Douglas Date 09-24-90

COUNTY SURVEYOR  
DOUGLAS COUNTY, ORE.

CORNER DESIGNATION

S.W. 1/16 Corner  
Section 11

- Condition Report Only
- Not Found
- Renewed
- Unrecorded
- Surveyed In
- Referenced Out

Previous Renewals/Surveys, etc. No previous surveys

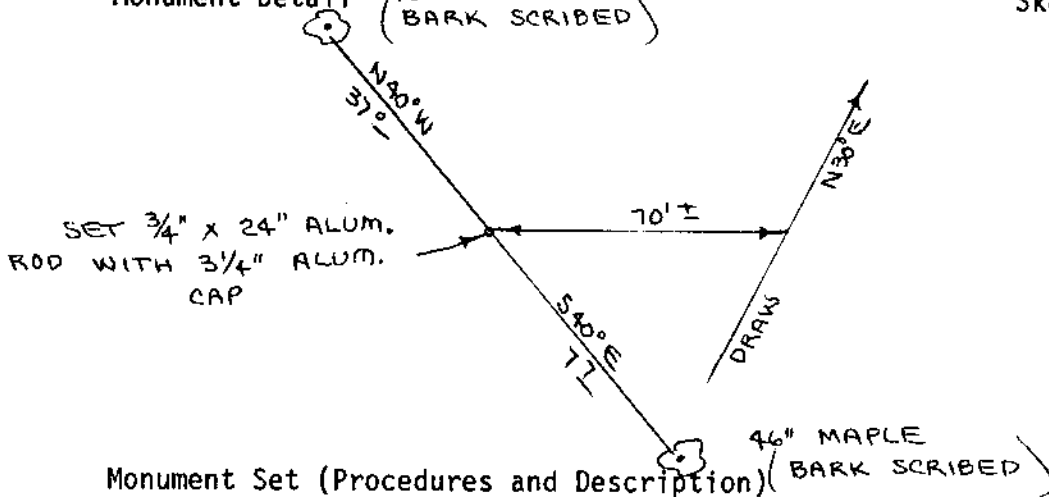
Monument(s) & Accessories Found: (Condition and Source)

None

Monument Detail

(15" ALDER  
BARK SCRIBED)

Sketch



Monument Set (Procedures and Description)

Set 3/4" x 24" Aluminum rod with 3/4" Aluminum cap. Buried purple magnetic marker under 24" aluminum rod. Set 60" aluminum post, with land monument survey sign bolted to, beside aluminum rod. See filed survey for survey procedures.

New Accessories

- 15" Alder, N40W, 37.0' (Bark Scribed/Painted Red)
- 46" Maple, S40E, 7.7' (Bark Scribed/Painted Red)

Location & Comments

Corner lies on N.E. slope about 70' West of small draw. Draw bears N30E and S30W.

Compass Declination 20 1/2

Firm/Agency Roberts Surveying Inc.

Address 29 West 29th St. Eugene, Oregon 97405

Party Chief Ted Baker

Notes \_\_\_\_\_

Witness Harvey Christensen

Surveyor's Seal

