

C.S. File No. C.S. 63/108-6

FILED TF

AUG 6 1990

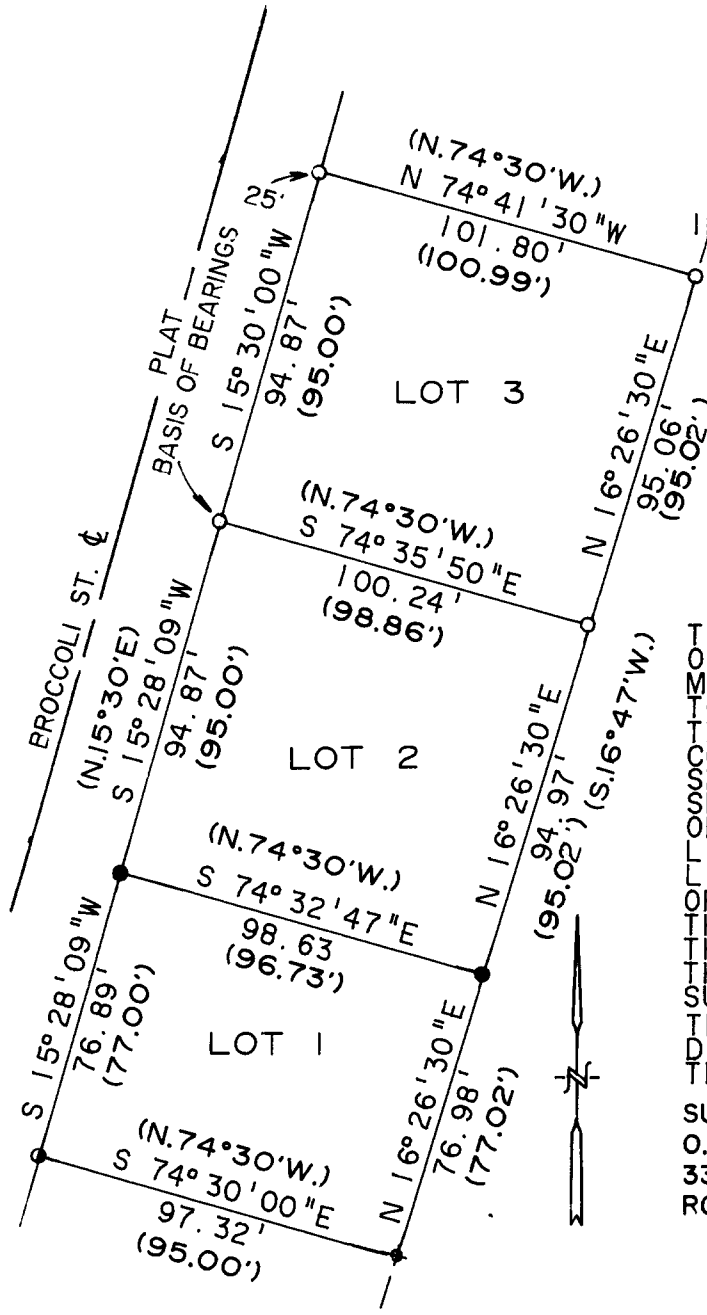
COUNTY SURVEYOR
DOUGLAS COUNTY, ORE.

SURVEY TO RESET LOT CORNERS
LOCATED IN GALE PLAT
IN THE SW 1/4 OF SEC. 14, T.27S., R.6W., W.M.
JULY, 1990 SCALE 1" = 50'

LEGEND

- = SET 5/8" X 30" IRON ROD W/PC MK'D:
"BAUGHMAN TECH SERV"
 - = FD. 5/8" I. R. AS PER PLAT
 - ◐ = FD. 1/2" I.R. AS PER PLAT
 - ⊕ = PT. CALCULATED NOT SET
 - () = PLAT RECORD
- NARRATIVE

COUNTY SURVEYORS FILE DATA
DO NOT REMOVE FROM OFFICE



THIS SURVEY WAS CONDUCTED FOR THE PURPOSE OF RESETTING CORNERS TO LOT 2 OF THE ABOVE MENTIONED PLAT. WE FOUND ALL OF THE CORNERS TO LOT 3 AND THE S.W. CORNER OF LOT 1. WE THEN PROCEEDED TO FORCE AND PRORATE THE S.W. CORNER OF LOT 2 BETWEEN FOUND MONUMENTS AS SHOWN. WE PROCEEDED TO MAKE A BEARING INTERSECTION WITH THE BEARING OF THE EAST SIDE OF LOT 3 AND THE CALL BEARING ON THE SOUTH LINE OF LOT 1. THEN WE PRORATED THE EAST LINE OF LOT 1 AND 2 WITH THE CALL BEARING OF THE SOUTH LINE OF LOT 1. WE THEN PRORATE THE EAST LINE OF THIS CALCULATION AND SET THE CORNERS. IT APPEARS THAT THIS MATCHES THE FENCES AND THE INTENT OF THE ORIGINAL SURVEY.

THIS SURVEY WAS PERFORMED BY K. DEGROOT AND D. BAUGHMAN USING A NTD 4 NIKON INSTRUMENT. THE DRAFTING WAS PERFORMED BY G. BAUGHMAN

SURVEYED FOR:
O. C. BOGGS
337 W.BROCCOLI ST.
ROSEBURG, OR 97470

SURVEYED BY:
BAUGHMAN TECHNICAL SERVICES INC.
433 S.E. MAIN ST.
ROSEBURG, OR 97470

REGISTERED
PROFESSIONAL
LAND SURVEYOR

Kristian O. Degroot

OREGON
JULY 17, 1981
KRISTIAN O. DEGROOT
1941

C.S. File No. 63/108-6