

FILED

*JK*

NOV 5 1990

OREGON CORNER RESTORATION FORM

Section 5 Township 23S Range 5W

County DOUGLAS Date 6/90

COUNTY SURVEYOR  
DOUGLAS COUNTY, ORE.

Corner Designation

SW <sup>1</sup>/<sub>16</sub>

◆  
S S

- Condition Report Only
- Not Found
- Renewed
- Unrecorded
- Surveyed In
- Referenced Out

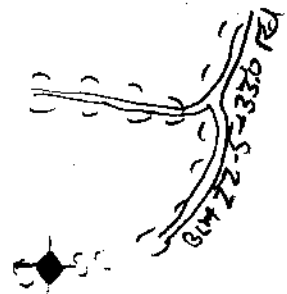
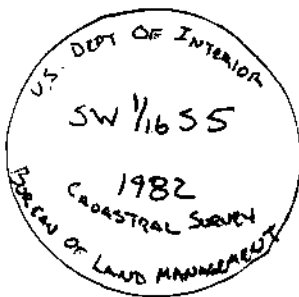
Previous Renewals/Surveys, etc. \_\_\_\_\_

Monument(s) & Accessories Found: (Condition and Source)

CORNER IS A 3 1/2" ALUMINUM CAP 0.5 FT. ABOVE GROUND IN GOOD CONDITION  
 14" D.F. BEARS S 24 1/2° E 18.2 FT. WELL HEALED FACE & BLM B.T. TAG  
 7" D.F. BEARS N 49° W 15.75 FT. WELL HEALED FACE & BLM B.T. TAG  
 METAL FENCE POST ALONG SIDE CORNER  
 1 1/2" IRON PIPE WITH PLASTIC CAP BEARS N 31° E 4.2 FT.

Monument Detail

Sketch



Monument Set (Procedures and Description)

New Accessories

PAINT FACES AND WROTE B.T. ON TREE TRUNKS OF ALL B.T.'S WITH FLOR. ORANGE PAINT.

Location & Comments

CORNER LIES ON 40% S.W. SLOPE ON TOP OF FOREST RIDGE Compass Declination 19 1/2°  
 Firm/Agency LOWE BROS TIMBER COMPANY  
 Address P.O. BOX 1127 ROSEBURG  
 Party Chief KEN HOFFINE  
 Notes \_\_\_\_\_  
 Witness \_\_\_\_\_

Surveyor's Seal

