

M110-58

FILED

SEP 17 1990 JP

OREGON CORNER RESTORATION FORM

Section 33 Township 23S Range 4W

COUNTY SURVEYOR
DOUGLAS COUNTY, ORE

County DOUGLAS Date 9-10-90

Corner Designation

CENTER EAST 1116
CORNER SECTION 33

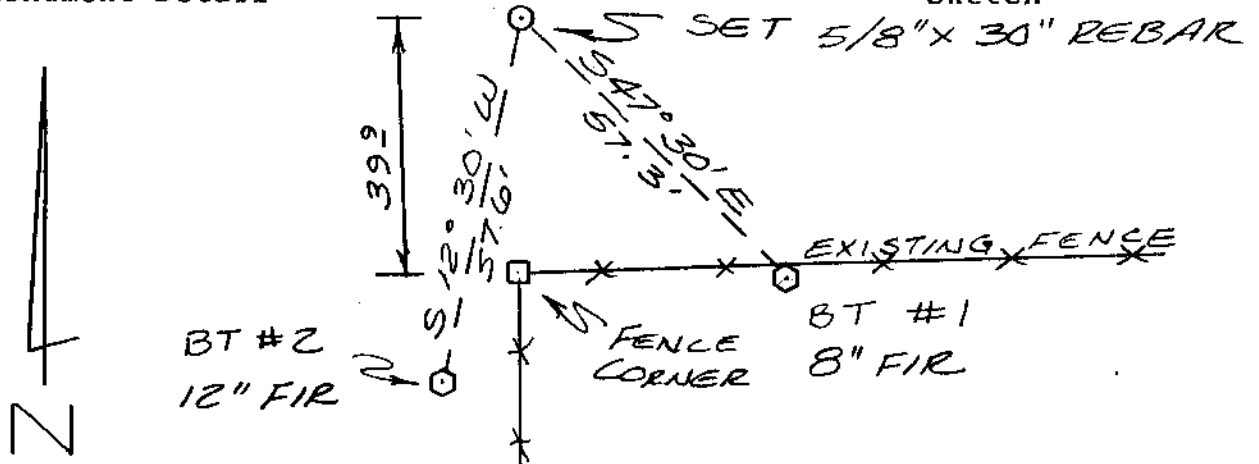
- Condition Report Only
- Not Found
- Renewed
- Unrecorded
- Surveyed In
- Referenced Out

Previous Renewals/Surveys, etc. NONE

Monument(s) & Accessories Found: (Condition and Source)
NONE

Monument Detail

Sketch



Monument Set (Procedures and Description)

SET 5/8" x 30" REBAR WITH YELLOW PLASTIC CAP, MARKED "BRANCH ENG LS 1138". CORNER WAS SET ON LINE AT THE MID-POINT BETWEEN THE EAST 1/4 CORNER AND THE CENTER OF SECTION 33.

New Accessories

- 1) 8" FIR SCRIBED "CE 1116 S 33 BT" BEARS S 47° 30' E 57.3'
- 2) 12" FIR SCRIBED "CE 1116 S 33 BT" BEARS S 12° 30' W 57.6'

Location & Comments

Surveyor's Seal

Compass Declination

Firm/Agency BRANCH

ENGINEERING

Address 212 Q STREET

SPRINGFIELD, OR

Party Chief G. HOFFMAN

Notes

Witness R. WHITE

REGISTERED PROFESSIONAL LAND SURVEYOR

James A. Branch

OREGON
SEPT. 23, 1977
JAMES A. BRANCH
1138