

FILED

JL

JUL 18 1990

OREGON CORNER RESTORATION FORM

Section 23/24 Township 20S Range 10W

County Douglas Date 6/21/90

COUNTY SURVEYOR
DOUGLAS COUNTY, ORE.

Corner Designation

Section Corner

- Condition Report Only
- Not Found
- Renewed
- Unrecorded
- Surveyed In
- Referenced Out

Previous Renewals/Surveys, etc. 1951 departed resurvey
set the corner by proportion

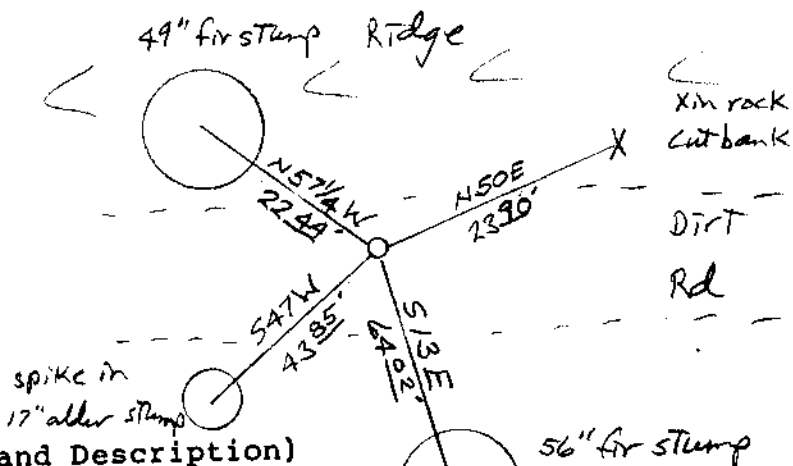
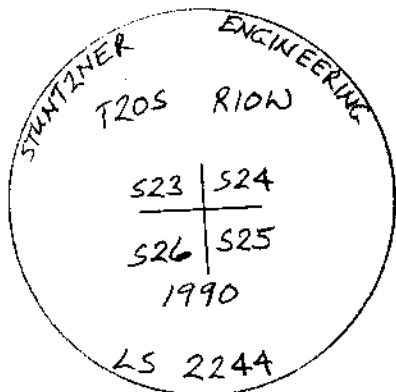
Monument(s) & Accessories Found: (Condition and Source)

fd 56" fir BT stamp with scribing
fd 49" fir BT stamp with face beam showing at cut

The previous monument & other 2 BTs were removed
by a road cut

Monument Detail

Sketch



Monument Set (Procedures and Description)

set 2" alum. cap on a 3/4" x 30" I. Rod
at record brg't & dist. from the 2 fd
BT's. The corner falls in a dirt cut road about 35'
south of a ridge. This corner falls in a freshly burned
clear cut

New Accessories

scribed an X in the rock cut bank
set a spike in the top of a 17" alder stamp

Location & Comments

East fork of
Spencer Creek a
Tributary of
Smith River

Compass Declination 19°

Firm/Agency Stutzner Engineering &
Forestry

Address P.O. Box 118 / 705 S. 4th
Coas Bay, Oregon 97420

Party Chief Harvey Wilcox

Notes Jerry Estabrook

Witness _____

Surveyor's Seal

REGISTERED
PROFESSIONAL
LAND SURVEYOR

Harvey Wilcox

OREGON
JULY 17, 1988
HARVEY WILCOX
2244

#12A

U.S. File No. 63/104-
22