

M109-74 A+B

FILED

APR 9 1990

OREGON CORNER RESTORATION FORM

Section 11 Township 22S Range 6W

COUNTY SURVEYOR
DOUGLAS COUNTY, ORE.

County DOUGLAS Date 3/23/90

Corner Designation

CENTER SOUTH 1/16
CORNER SECTION 11

- Condition Report Only
- Not Found
- Renewed
- Unrecorded
- Surveyed In
- Referenced Out

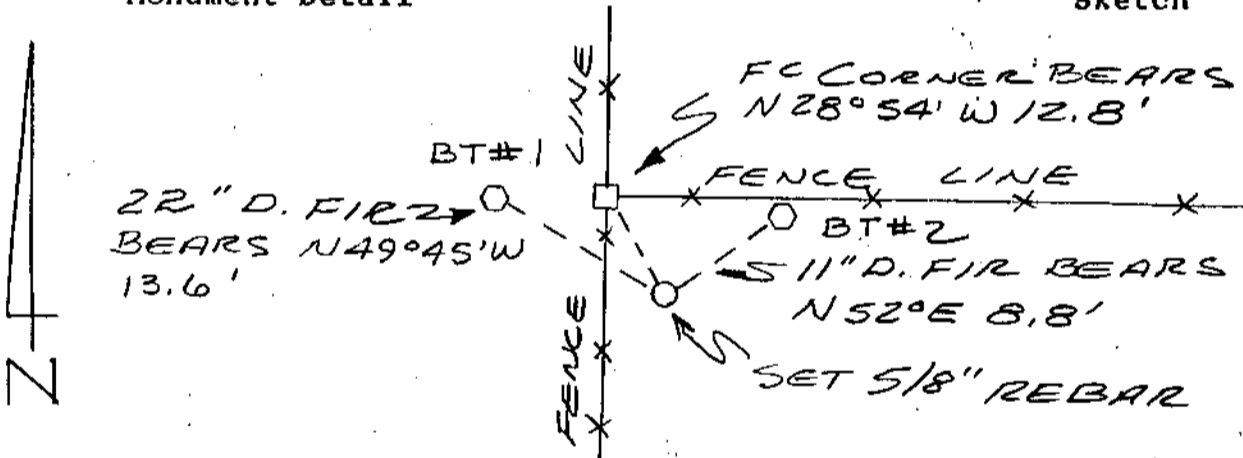
Previous Renewals/Surveys, etc. _____

Monument(s) & Accessories Found: (Condition and Source)

CORNER FENCE POST FOR NORTH - SOUTH
FENCE LINE, WITH INTERSECTING FENCE
LINE RUNNING EAST BEARS N28°54'W
12.8 FEET.

Monument Detail

Sketch



Monument Set (Procedures and Description)

SET 5/8" x 30" REBAR WITH YELLOW PLASTIC CAP
MARKED "BRANCH ENG LS 1138". CORNER WAS
SET ON LINE AT THE MIDPOINT BETWEEN THE
CENTER QUARTER AND THE SOUTH QUARTER
SECTION CORNERS.

New Accessories

- 1) 22" D. FIR SCRIBED "CS 1116 S11 BT" BEARS
N 49° 45' W 13.6 FEET.
- 2) 11" D. FIR SCRIBED "CS 1116 S11 BT" BEARS
N 52° E 8.8 FEET.

Location & Comments

Surveyor's Seal

Compass Declination _____
 Firm/Agency BRANCH
ENGINEERING
 Address 212 Q STREET
SPRINGFIELD, OR
 Party Chief R. OLSON
 Notes _____
 Witness G. HOFFMAN

REGISTERED
PROFESSIONAL
LAND SURVEYOR

James A. Branch
OREGON
SEPT. 23, 1977
JAMES A. BRANCH
1138