

M109-74 ABB

FILED

APR 9 1990

OREGON CORNER RESTORATION FORM

Section 11 Township 22S Range 6W

County DOUGLAS Date 3/23/90

COUNTY SURVEYOR
DOUGLAS COUNTY, ORE.

Corner Designation

SOUTH 1/4 CORNER, ALSO
BEING THE COMMON 1/4
CORNER TO SECTION 13

- Condition Report Only
- Not Found
- Renewed
- Unrecorded
- Surveyed In
- Referenced Out

Previous Renewals/Surveys, etc. _____

Monument(s) & Accessories Found: (Condition and Source)

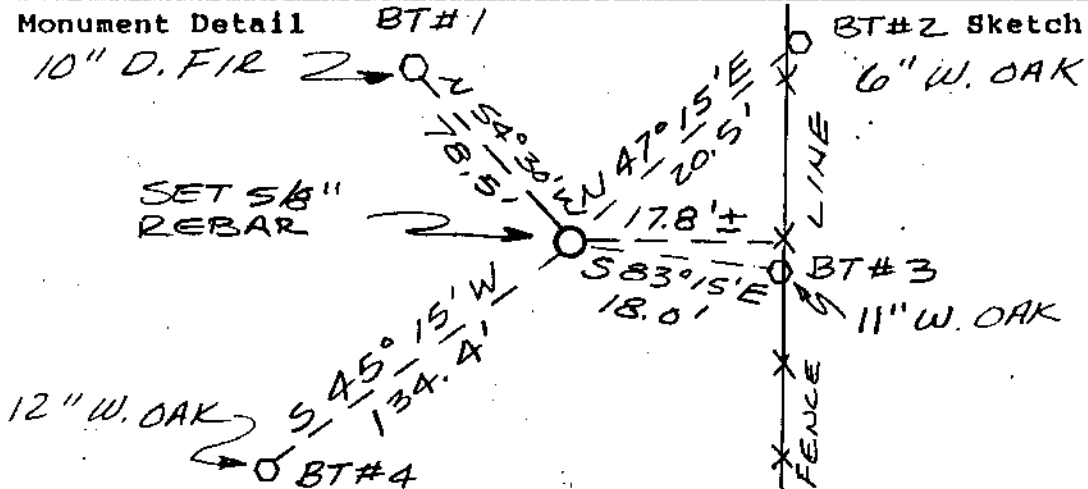
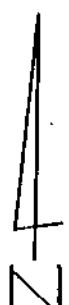
NO EVIDENCE OF ORIGINAL CORNER WAS
FOUND. EXISTING NORTH-SOUTH FENCE
LINE IS EAST 17.8 FEET FROM
REESTABLISHED CORNER.

Monument Detail BT#1

10" D. FIR

BT#2 Sketch

6" W. OAK



Monument Set (Procedures and Description)

SET 5/8" X 30" REBAR WITH YELLOW PLASTIC
CAP MARKED "BRANCH ENG LS 1138". CORNER
WAS SET BY PROPORTIONATE MEASUREMENT, ON
LINE AT THE MID POINT BETWEEN THE
SW AND SE SECTION CORNERS.

New Accessories

- 1) 10" D. FIR SCRIBED "S1/4S11 BT" BEARS N 54° 30' W 78.5'
- 2) 6" W. OAK SCRIBED "S1/4S11 BT" BEARS N 47° 15' E 20.5'
- 3) 11" W. OAK SCRIBED "N1/4S14 BT" BEARS S 83° 15' E 18.0'
- 4) 12" W. OAK SCRIBED "N1/4S14 BT" BEARS S 45° 15' W 134.4'

Location & Comments

Compass Declination _____

Firm/Agency BRANCH
ENGINEERING

Address 212 Q STREET
SPRINGFIELD, OR

Party Chief R. OLSON

Notes _____

Witness G. HOFFMAN

Surveyor's Seal

REGISTERED
PROFESSIONAL
LAND SURVEYOR

James A. Branch
OREGON
SEPT. 23, 1977
JAMES A. BRANCH
1138

#154 ✓

C.S. File No. 63/104-12c