

FILED

OREGON CORNER RESTORATION FORM

Section 28 Township 30S Range 5W

JAN 12 1990

County Douglas Date 11/30/89

COUNTY SURVEYOR  
DOUGLAS COUNTY, ORE.

Corner Designation

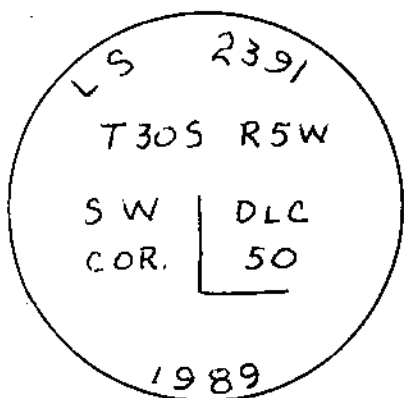
S.W. Corner  
D.L.C. #50

- Condition Report Only
- Not Found
- Renewed from B.T.s
- Unrecorded
- Surveyed In
- Referenced Out

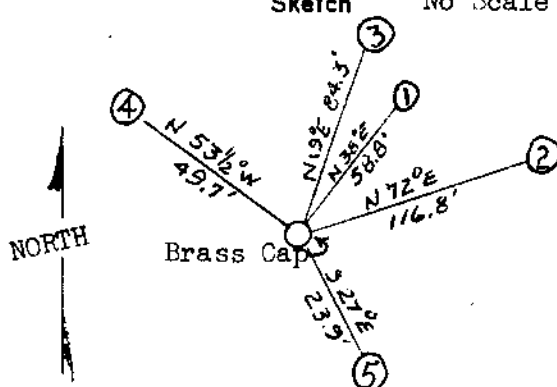
Previous Renewals/Surveys, etc. Renewal No. 235, Stone corner set by Summers 1920 (Vol. 3, Pg. 68), Brass Cap set by Douglas County 1966 (M 31-62) with ref. to Summers bearing tree.

Monument(s) & Accessories Found: (Condition and Source) At corner NO Brass Cap was found. Ground search did find various pieces of flagging at point for Brass Cap. Both Bearing Trees as Per M 31-62 were found. The 36 inch B. Oak is now a tall snag with scribe visible in scare. The 14 inch W. Oak is now 19 inch with a good healed scare and metal tag.

Monument Detail



Sketch No Scale



Monument Set: (Procedures and Description) At corner I set a 2" X 36" Galv. iron pipe with 3" Brass Cap, 30 inches in ground with rock mound. Corner was renewed from recorded bearing trees (M 31-62).

- ① 14" W. Oak now 19" bears N 38° E 58.8 ft. with good scare.
- ② 36" B. Oak now 36" bears N 72° E 116.8 ft., this bearing tree is a dead snag with L C 50 visible in open face. This BT was also called by Vol. 3, Pg. 68.

- ③ New Accessories 16" W. Oak bears N 19° E 84.3 ft. Mkd. S W DLC 50 BT
- ④ 7" W. Oak bears N 53 1/2° W 49.7 ft. Mkd. S W DLC 50 BT
- ⑤ 11" Cedar bears S 27° E 23.9 ft. Mkd. S W DLC 50 BT

Location & Comments  
Corner falls in a semi open field approx. 150 ft. east of a small creek.

Compass Declination 17° E  
 Firm/Agency \_\_\_\_\_  
Raymond F. Brown  
 Address P.O. Box 539  
Canyonville, OR 97417  
 Party Chief Raymond Brown  
 Notes Raymond Brown  
 Witness Scott Owens

Surveyor's Seal

