



Station: RSBG 125 T 27 S, R 6 W , Sec 23

Set By (Agency): CITY (RSBG)

Date Set: 1/89

Recovered By \_\_\_\_\_

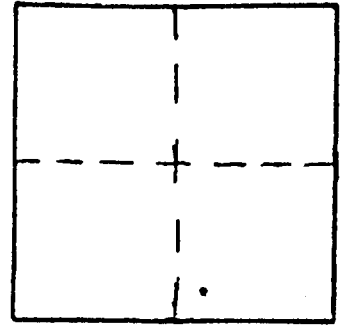
Date Recovered \_\_\_\_\_

Recovered By \_\_\_\_\_

Date Recovered \_\_\_\_\_

Recovered By \_\_\_\_\_

Date Recovered \_\_\_\_\_



VERTICAL CONTROL

Elevation: \_\_\_\_\_ NGS Line # \_\_\_\_\_ USGS Line # \_\_\_\_\_ OSHD Line # \_\_\_\_\_

Precision: \_\_\_\_\_ Agency: \_\_\_\_\_ Proj. # \_\_\_\_\_ Date: \_\_\_\_\_

HORIZONTAL CONTROL

South Zone State Plane Coordinates: Y(Northing) 575948.64 X(Easting) 1235385.81

Precision: 1/20,000 Agency: CITY (RSBG) Proj. # \_\_\_\_\_ Date: \_\_\_\_\_

Approximate Geographic Position: Latitude \_\_\_\_\_ Longitude \_\_\_\_\_

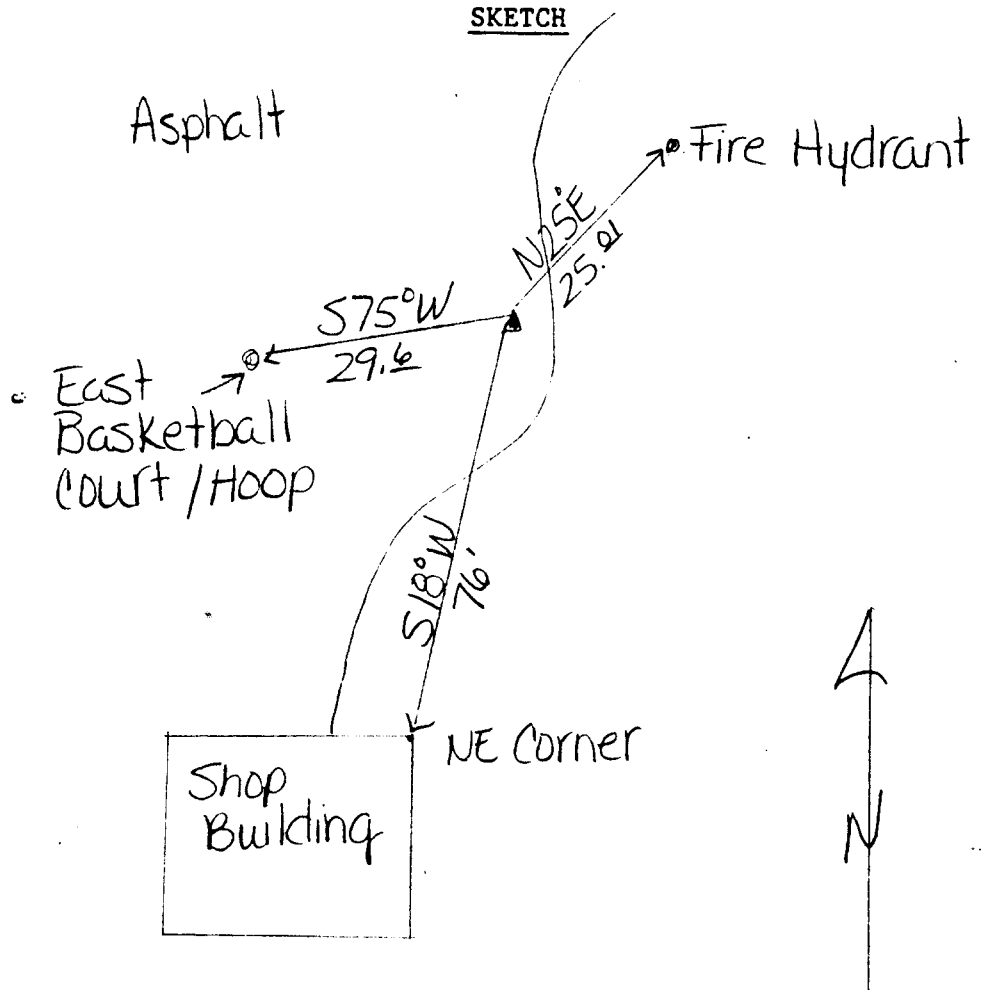
DESCRIPTION and TO REACH

Rest alum. cap stamped  
"RSBG 125" set flush in  
concrete.

TO REACH:

Monument is in Southeast  
Corner of parking area of  
Freemont Junior High School.

SKETCH



Reference Marks: