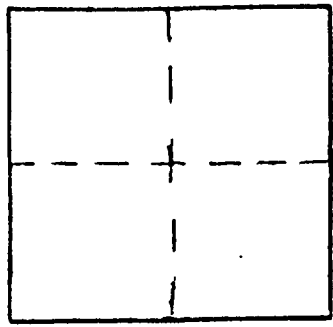




Station: RSBG 55 T 27 S, R 5 W , Sec 21  
 Set By (Agency): CITY(RSBG)  
 Date Set: 1/89  
 Recovered By \_\_\_\_\_  
 Date Recovered \_\_\_\_\_  
 Recovered By \_\_\_\_\_  
 Date Recovered \_\_\_\_\_  
 Recovered By \_\_\_\_\_  
 Date Recovered \_\_\_\_\_



VERTICAL CONTROL

Elevation: 599.55 NGS Line # \_\_\_\_\_ USGS Line # \_\_\_\_\_ OSHD Line # \_\_\_\_\_  
 Precision: \_\_\_\_\_ Agency: \_\_\_\_\_ Proj. # \_\_\_\_\_ Date: \_\_\_\_\_

HORIZONTAL CONTROL

South Zone State Plane Coordinates: Y(Northing) 573,196.93 X(Easting) 1,253,494.26  
 Precision: 1/20,000 Agency: CITY(RSBG) Proj. # \_\_\_\_\_ Date: \_\_\_\_\_  
 Approximate Geographic Position: Latitude 43°12'19" Longitude 123°18'02"

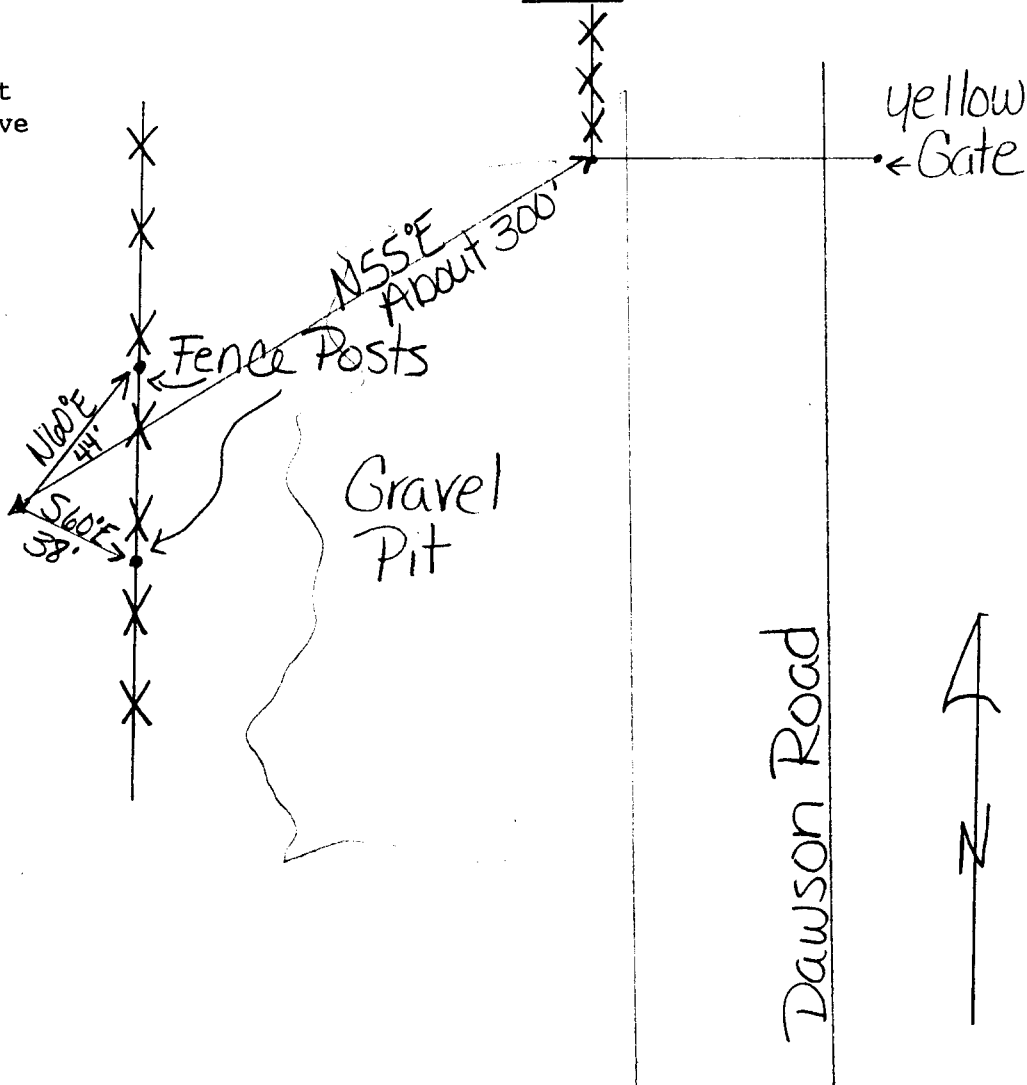
DESCRIPTION and TO REACH

Alum. cap stamped "RSBG 55" on a 2" x 30" alum. pipe set in concrete, cap is 0.5 above ground.

TO REACH:

Go South on Dawson Road to yellow gate, then go South 55° West about 300' feet.

SKETCH



Reference Marks: