



Station: 120 T 27 S, R 5W, Sec 21

Set By (Agency): CITY (RSBG)

Date Set: \_\_\_\_\_

Recovered By \_\_\_\_\_

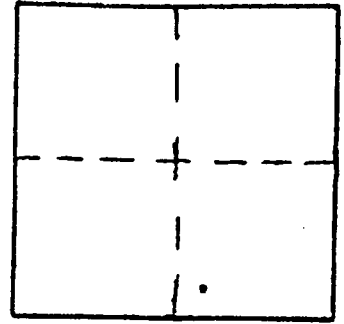
Date Recovered \_\_\_\_\_

Recovered By \_\_\_\_\_

Date Recovered \_\_\_\_\_

Recovered By \_\_\_\_\_

Date Recovered \_\_\_\_\_



VERTICAL CONTROL

Elevation: \_\_\_\_\_ NGS Line # \_\_\_\_\_ USGS Line # \_\_\_\_\_ OSHD Line # \_\_\_\_\_

Precision: \_\_\_\_\_ Agency: \_\_\_\_\_ Proj. # \_\_\_\_\_ Date: \_\_\_\_\_

HORIZONTAL CONTROL

South Zone State Plane Coordinates: Y(Northing) 575384.84 X(Easting) 1256353.75

Precision: 1/20,000 Agency: CITY (RSBG) Proj. # \_\_\_\_\_ Date: \_\_\_\_\_

Approximate Geographic Position: Latitude \_\_\_\_\_ Longitude \_\_\_\_\_

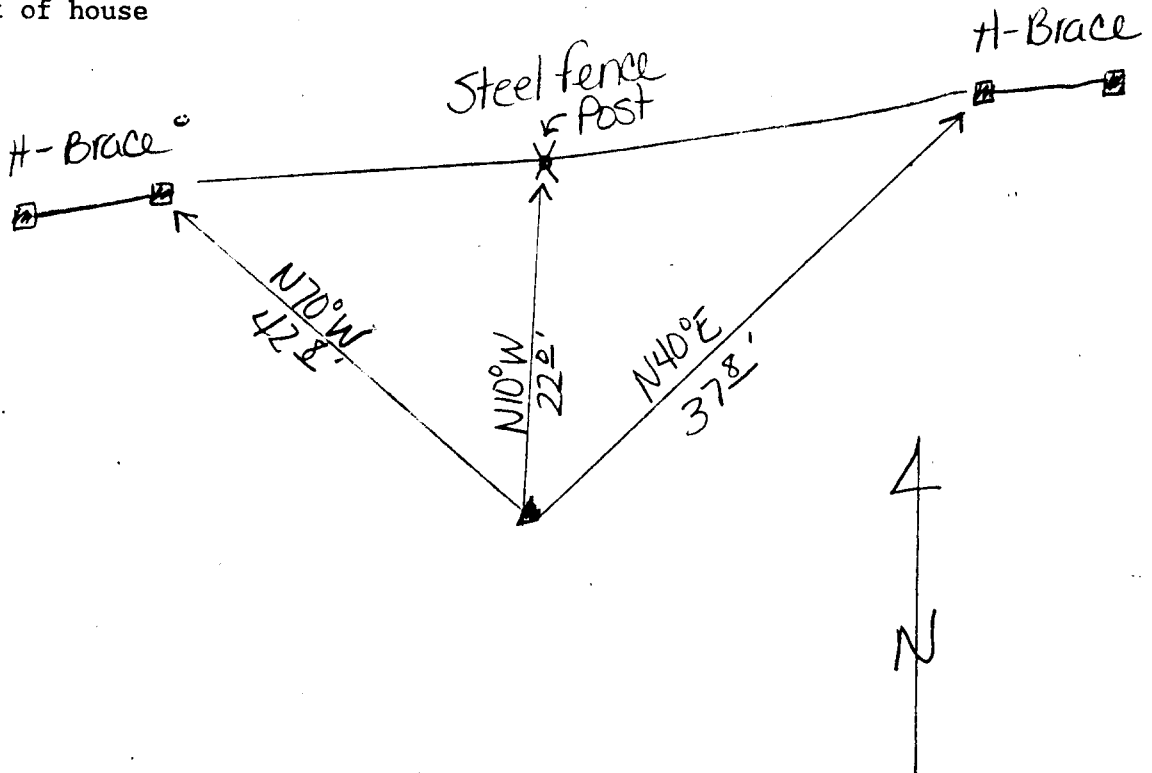
DESCRIPTION and TO REACH

5/8" iron rod with washer flush with ground.

SKETCH

TO REACH:

Go to first farm house on Dawson Road. Monument is about 1/2 mile East of house on top of third hill.



Reference Marks: