

M107-66

FILED

APR 5 1989

COUNTY SURVEYOR
DOUGLAS COUNTY, ORE.

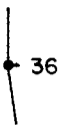
OREGON CORNER RESTORATION FORM

Section 36 Township 22S Range 12W

County Douglas Date 02-21-89

CORNER DESIGNATION

West $\frac{1}{4}$ Corner
Section 36 Only.



- Condition Report Only
- Not Found
- Renewed
- Unrecorded
- Surveyed In
- Referenced Out

Previous Renewals/Surveys, etc. G.L.O. Survey by Charles A. Slang in 1910. Survey by Clifford A. Stephens in 1952 and State of Oregon Survey M55-73 dated April 1975.

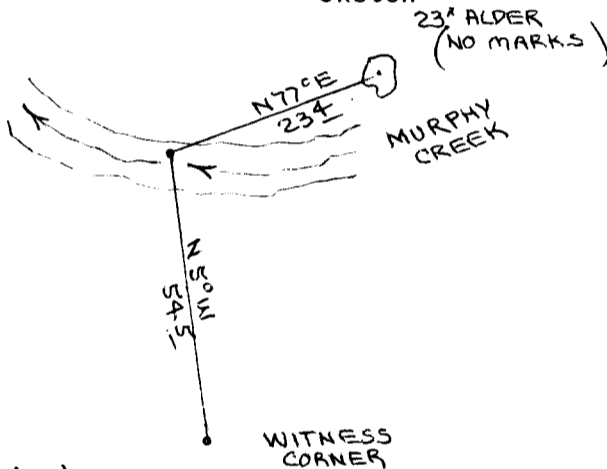
Monument(s) & Accessories Found: (Condition and Source)

Corner falls in Murphy Creek. No monument found.

23 Alder, N77E, 23.4' (No Marks), 1952 BT. Rec. N77E, 23.4'

Monument Detail

Sketch



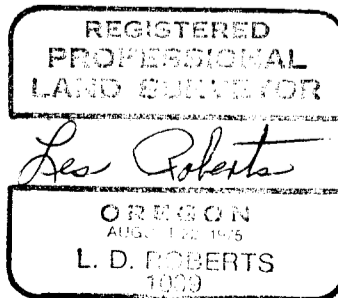
Monument Set (Procedures and Description)

New Accessories

Location & Comments

Surveyor's Seal

Compass Declination 20 1/2
 Firm/Agency Roberts
Surveying Inc.
 Address 29 West 29th St.
Eugene, Oregon 97405
 Party Chief Les Roberts
 Notes Ted Baker
 Witness Norman Hamar



C.S. File No. 63/91-9

#224 4