

FILED

FEB 14 1989

COUNTY SURVEYOR
DOUGLAS COUNTY, ORE.

COUNTY SURVEYORS FILE DATA
DO NOT REMOVE FROM OFFICE

COPY REC'D FROM
ASSESSOR OFFICE -
FOR INFORMATION TO USE
AS YOU WILL - (NOTE: NO
LEGEND OR ENCL/STAMP.)
CS 4/1/60 FOR ORIGINAL

YONCALLA LUMBER COMPANY

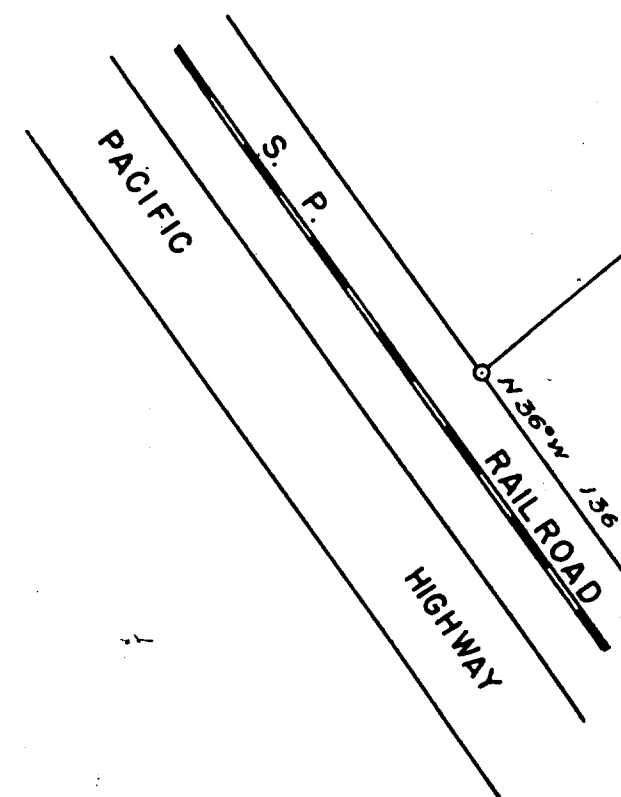
JULY 1952
1" = 100'

FRED L. DOW
CIV. ENG.

T. 22 S R. 5 W.

LOT 3
SEC. 27

COUNTY SURVEYORS FILE DATA
DO NOT REMOVE FROM OFFICE



SW COR. JOHN H. PAYNE PROPERTY

JOHN H. PAYNE PROPERTY

COUNTY SURVEYORS FILE DATA
DO NOT REMOVE FROM OFFICE

C.S. File No. 63/88-1

E CORNER JESSE APRIL GATE D.I.C.

SEC. 28
SEC. 27

EAST PROPERTY LINE

EAST LINE JESSE APRIL GATE D.I.C.

N 50° E 403

N 48° 30' E 245

N 67° E 515

N 33° E 115

N 77° 30' E 140

N 65° 45' E 162

N 64° 45' E 223

N 62° 30' E 248

LOT 4
SEC. 27

N 31° 20' W 625