

FILED

OCT 16 1989

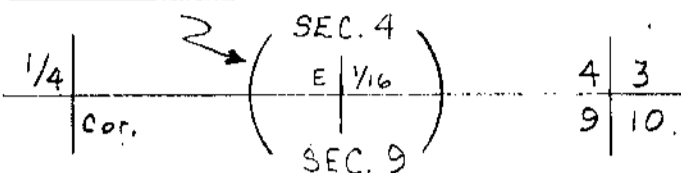
OREGON CORNER RESTORATION FORM

Section 4 Township 31S Range 5W

County Douglas Date 10/11/89

COUNTY SURVEYOR DOUGLAS COUNTY, ORE.

Corner Designation



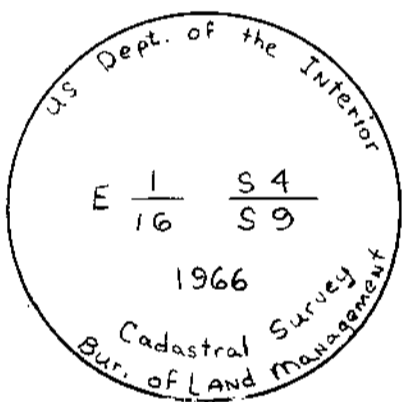
- Condition Report Only
- Not Found
- Renewed
- Unrecorded
- Surveyed In
- Referenced Out

Previous Renewals/Surveys, etc. Corner set by B.L.M. in 1966

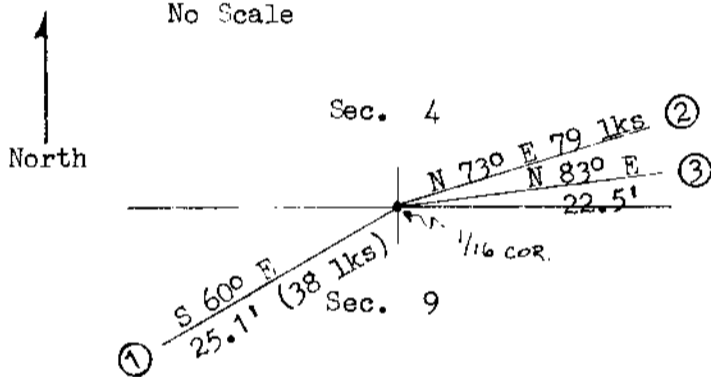
Monument(s) & Accessories Found: (Condition and Source) Found Brass Cap at corner as per B.L.M., in good condition (pipe extends 6" out of ground, mkd. as shown.) Bearing Trees:

- ① 22" Fir now 24", has good scare, tree has been in a fire with bark blackened up tree about 20 ft. from ground. Tag was partly burnt.
- ② 14" Fir is now a snag, downed either by said fire or by logging activity, sketch shows record bearing and distance.

Monument Detail



Bearing Trees Sketch No Scale



Monument Set: (Procedures and Description)

NOT NEEDED

New Accessories ① At orig. bearing tree, I replaced metal tag and mkd. it as per B.L.M. field notes, bearing and distance agree with that of record. ③ Placed a 3 inch "X" on a solid rock outcrop with letters "B O" beneath "X". "X" is located 8" West of the most Easterly point on top of rock outcrop, and bears N 83° E 22.5 feet from brass cap.

Location & Comments

Corner falls in middle of a clear cut unit about 70 ft. below a new logging road. The only live tree in the area was said 24" Fir Bearing Tree.

Compass Declination 16 1/2° E Firm/Agency Raymond F. Brown Address P.O. Box 539 Canyonville, OR. 97417 Party Chief R. Brown Notes R. Brown Witness Steve Royle

Surveyor's Seal

