

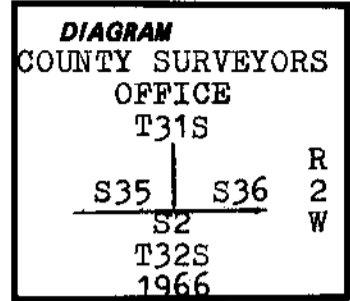
CERTIFIED RECORD OF LAND CORNER MONUMENTATION

History of original corner establishment:

FILED

JUL 19 1989

COUNTY SURVEYOR
DOUGLAS COUNTY, ORE.



Ref # 14 T31-2
14 T32-2

Description of corner evidence found:

A 1" iron pipe with 2 1/2" brass cap extended 12" above ground and marked as shown in diagram, from which:

- A 46" D. Fir bears N45°W, 3.3 feet - healed blaze. (dist. is to face)
- A 16" D. Fir (dead & down), bears N65°E, 19.8 feet.
- A 32" D. Fir stump bears N27°E, 54.4 feet.

Description of monument and accessories I established to perpetuate the original location of this corner:

(New BT) A 4" D. Fir bears N75°E, 44.0 feet scribed "X" in small upper blaze and "BT" in small lower blaze with brass washer stamped "LS 1035" nailed to lower blaze.

I hereby certify the above corner was perpetuated as hereon described in April, 1989. Bearing tree and monument signs were placed on all BT's without them and a 6" band and face blazes were painted red on all bearing trees.

REGISTERED
PROFESSIONAL
LAND SURVEYOR

OREGON
GERALD V. NYGREN
AUGUST 22, 1975
1035

Office of... Surveyor..... County of... Douglas.....
 State of... Oregon....., I hereby certify that the within instrument was filed in this office
 for record on the... 19th day of... July....., 1989.
 Fritz Ingram..... by *Virginia A. Ferguson*.....
 (COUNTY OFFICIAL) (DEPUTY)

Form R6-7100-57 (9/71)

#231 T31-2 ✓
#134 T32-2 ✓

C.S. File No. 63/85-24
C