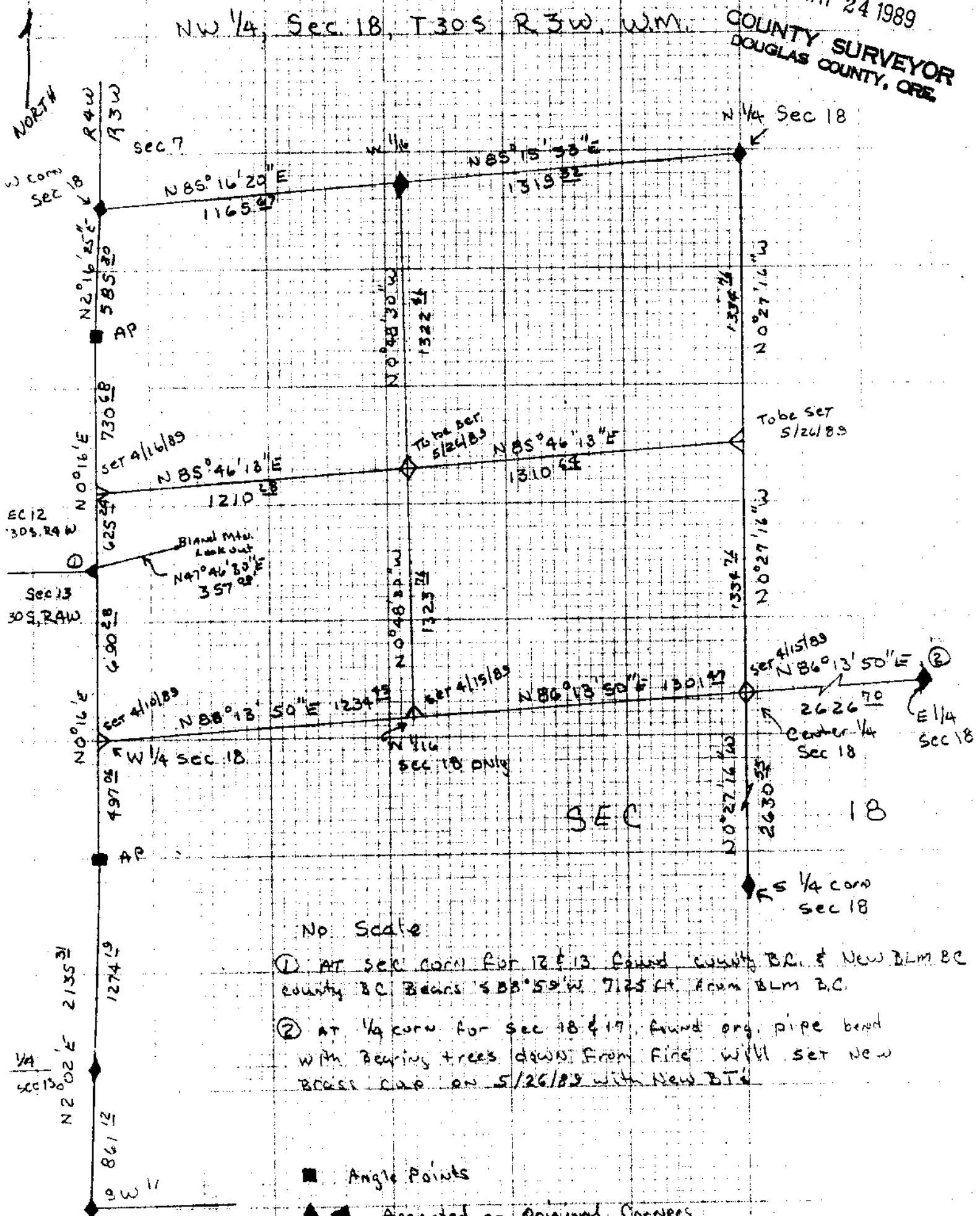


MAY 24 1989

COUNTY SURVEYOR
DOUGLAS COUNTY, ORE



No Scale

- ① AT sec corn for 12 & 13 found county BC & New BLM BC county BC bears S 88° 59' W 7125 ft. Acum BLM BC.
- ② AT 1/4 corn for sec 18 & 17 found org. pipe bend with bearing trees down from line will set new brass cap on 5/26/89 with New B.T.

- Angle Points
- ◆ Accepted or Original Corners
- ◇ Established Corners

Final map to be filed by 6/1/89