

SURVEY TO SET PROPERTY CORNERS
 LOTS 1 THRU 6, BLOCK 6, FIRST ADD'N
 TO KINNEY'S IMPROVED PLAT
 IN THE S.E. 1/4 OF SECTION 18, T. 27S., R. 5W.W.M.
 FOR GENE PECK
 BY BRUCE ROGERS
 200 N.E. PATTERSON
 ROSEBURG, OREGON
 NOV, 1989
 1"=50'

COUNTY SURVEYORS FILE DATA
 DO NOT REMOVE FROM OFFICE

FILED

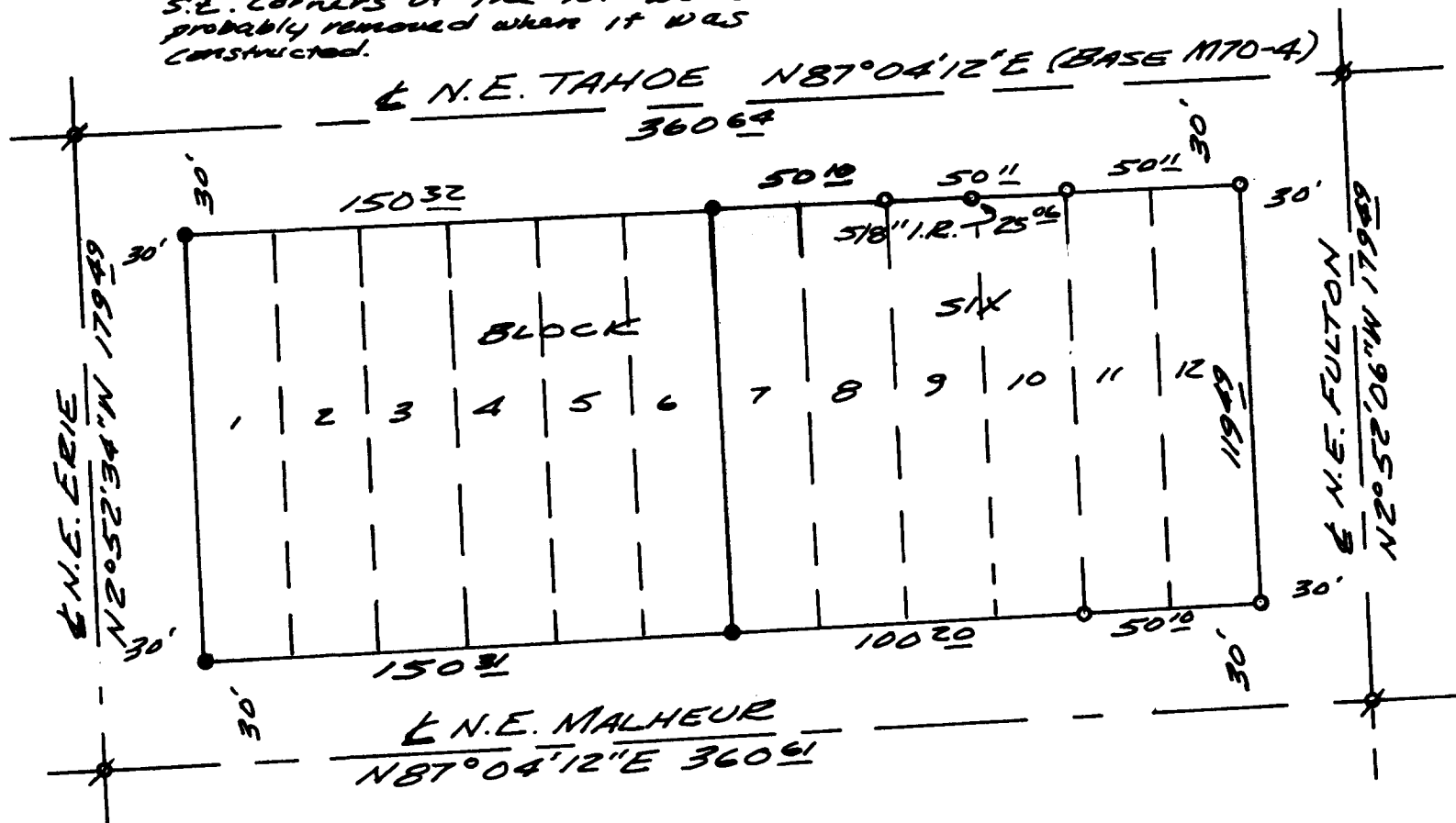
NOV 20 1989 TF

COUNTY SURVEYOR
 DOUGLAS COUNTY, ORE TF

Note:

There is a 5/8" iron rod
 N 52°22'E 122 from the
 N.E. corner of Lot B.

There's a board fence along
 the east line of Lot 6. The N.E. &
 S.E. corners of the lot were
 probably removed when it was
 constructed.



NARRATIVE
 We found and tied the monuments
 from M70-4 as shown. We set the
 new and missing corners using
 bearings & distances from that
 survey.
 All done with transit & chain.

REGISTERED
 OREGON
 LAND SURVEYOR

Bruce L. Rogers

JULY 22, 1944
 BRUCE L. ROGERS
 660

- ⊗ - Fd. 5/8" I.R. with Alum. Cap M70-4
- - Fd. 1/2" I.R. M70-4 or as noted
- - Set 5/8x30" I.R. with cap marked L.S. 660

C.S. File No. 63/80-2