

**COUNTY SURVEYORS FILE DATA
DO NOT REMOVE FROM OFFICE**

RECORD OF SURVEY
for INTERNATIONAL PAPER COMPANY
by WARD NORTHWEST INC.
in Section 12, T.21S., R.12W, W.M.
Douglas County, Oregon - 1/06/88

FILED

MAR 11 1988

COUNTY SURVEYOR
DOUGLAS COUNTY, ORE

REGISTERED
PROFESSIONAL
LAND SURVEYOR

Robert B Ward Jr

OREGON
ROBERT B. WARD, JR.
JULY 30 1976
1091

NARRATIVE

The purpose of this survey was to mark and post the property line specified on this map for International Paper Company.

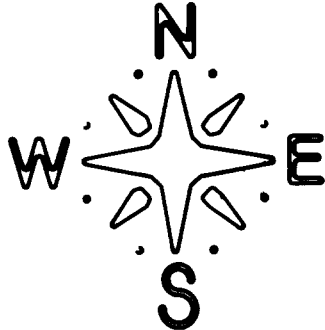
Controlling corners were tied and the position of the posted line was determined based on the 1979 survey of this section by Richard Hintz (LS497). Refer to CS M 79-30.

Basis of Bearing was per the above referenced 1979 survey.

Property lines are blazed and monumented with a 6 ft aluminum property line post at the locations specified on this map. Magnetic markers are buried at the base of each set aluminum post.

This survey was performed using a NIKON NTD-2 semi total station.

Bearings and distances to bearing trees are taken to the center of the tree at the top of the root crown with a semi total station. Points of measure on bearing trees are marked with a large nail.



LEGEND

- Corner Monument Found
- Aluminum Property Line Post
- ══ Blazed Property Line



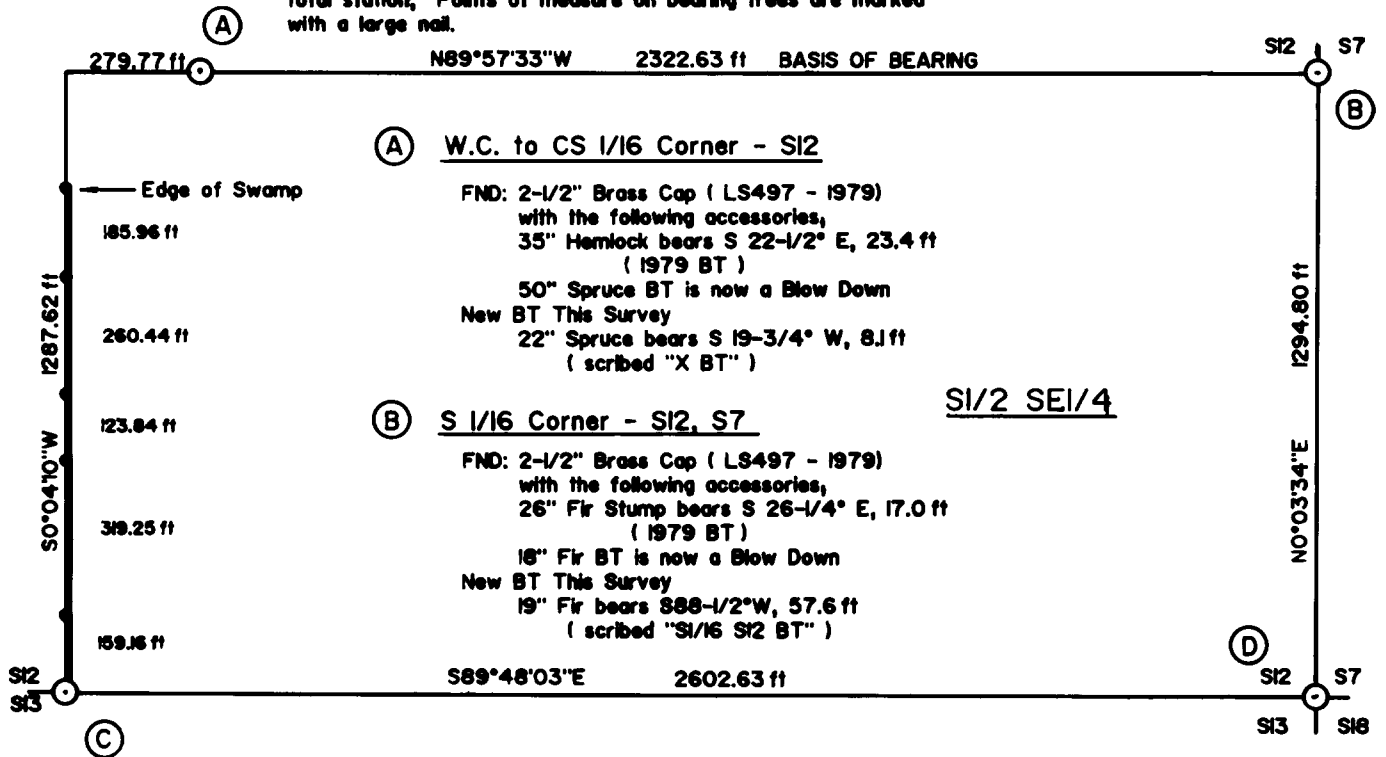
Scale = 1" = 400'

(C) 1/4 Corner - S12, S13

FND: 2-1/2" Brass Cap (LS497 - 1979)
with the following accessories,
9" Alder bears S 22-1/2° E, 17.7 ft
(1979 BT)
16" Fir bears N 34-1/4° E, 10.1 ft
(1979 BT)

(D) Section Corner - S12, S7, S18, S13

FND: 2-1/2" Brass Cap (County Surveyors
Office - 1970) with the following
accessories,
25" Twin Cedar bears N 60-1/4° W, 14.3 ft
(healed face)
11" Cedar Stump bears N 30-1/2° E, 26.0 ft
(open face)
15" Fir bears S 54° E, 16.5 ft
(healed face)
16" Cedar bears S 13-3/4° W, 5.0 ft
(healed face)



WARD NORTHWEST INC. - P.O. Box 105 - Florence, Oregon 97439

63/70-1