

STANDARD 1/4 CORNER SECTION 34
FOUND - LANE COUNTY BRASS CAP
35" FIR, N 46 E, 277'
21" FIR, S 12 W, 21.4'
21" FIR, N 70 W, 18.2'

CLOSING CORNER SECTIONS 3 & 4
SET - U.S.F.S. 2 1/2" ALUMINUM MONUMENT
23" HEMLOCK, SOUTH, 107.1'
10" HEMLOCK, S 48 W, 58.8'

STANDARD CORNER SECTIONS 33 & 34
FOUND - 1 3/4" IRON PIPE WITH BRASS CAP
19" HEMLOCK, N 48 E, 34.3'
26" FIR, N 54 W, 64.8'

CLOSING 1/4 CORNER SECTION 3
SET - U.S.F.S. 2 1/2" ALUMINUM MONUMENT
10" FIR, S 9 E, 50.5'
10" FIR, S 26 W, 54.2'

CLOSING CORNER SECTIONS 2 & 3
FOUND - 1 3/4" IRON PIPE WITH BRASS CAP
34" FIR, S 37 E, 54.4'
16" ALDER, S 8 E, 19.6'
16" ALDER, S 6 W, 25.0'
34" FIR, S 23 W, 88.0'

STANDARD 1/4 CORNER SECTION 35
FOUND - 1" IRON PIPE WITH BRASS CAP
16" FIR SNAG, N 89 E, 33.8'
28" FIR, N 11 W, 56.8'

STANDARD CORNER SECTIONS 34 & 35
FOUND - 1 3/4" IRON PIPE WITH BRASS CAP
36" FIR, N 56 E, 42.1'
25" FIR, N 56 W, 21.2'

STANDARD CORNER SECTIONS 35 & 36
FOUND - 1 3/4" IRON PIPE WITH BRASS CAP
30" FIR, N 53 E, 19.8'
30" FIR, N 30 W, 40.9'

CLOSING CORNER SECTIONS 1 & 2
FOUND - 1 3/4" IRON PIPE WITH BRASS CAP
34" FIR, S 45 E, 61.0'
14" FIR STUB, S 5 W, 29.0'
34" FIR, S 9 W, 42.9'

CLOSING 1/4 CORNER SECTION 2
SET - 2 1/2" BRASS TABLET CEMENTED IN
LARGE SANDSTONE BOULDER
13" FIR, S 69 E, 28.9'
19" FIR, S 26 W, 44.0'

STANDARD 1/4 CORNER SECTION 36
FOUND - 1" IRON PIPE WITH BRASS CAP
17" FIR SNAG, N 10 W, 42.9'
11" ALDER, N 11 W, 16.4'
16" ALDER, N 66 E, 14.5'

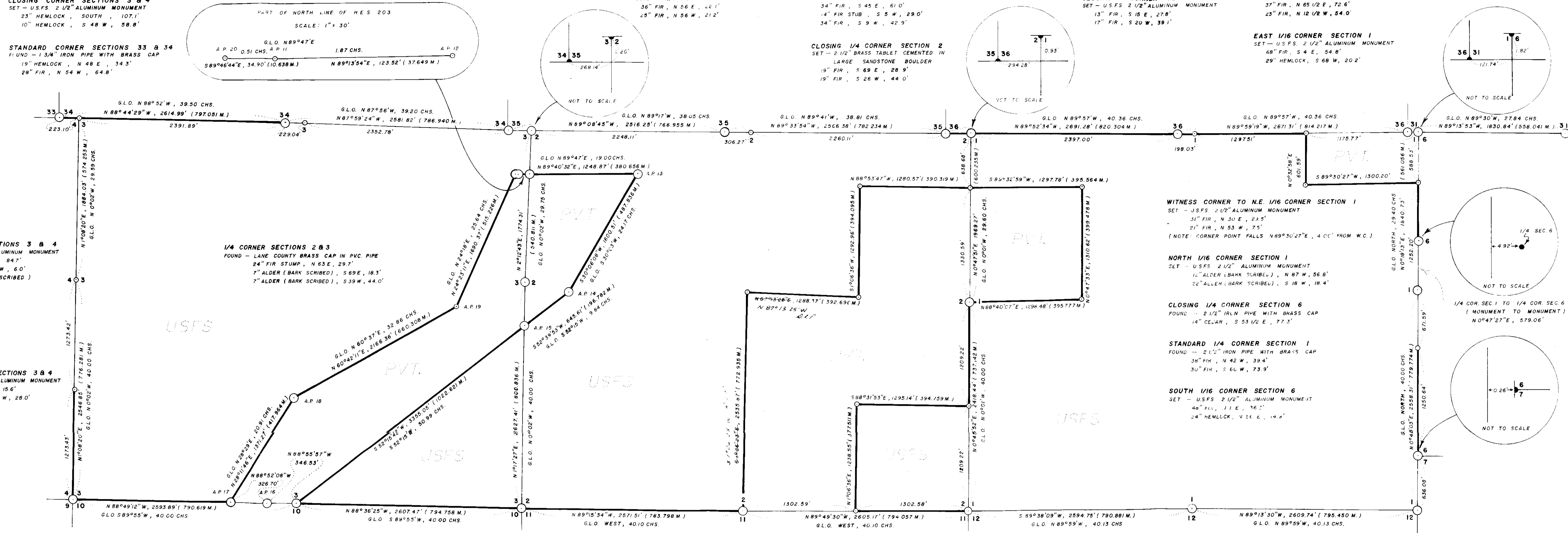
CLOSING 1/4 CORNER SECTION 1
SET - U.S.F.S. 2 1/2" ALUMINUM MONUMENT
13" FIR, N 15 E, 27.8'
17" FIR, S 20 W, 39.1'

CLOSING CORNER SECTIONS 1 & 6
FOUND - 3" IRON PIPE WITH BRASS CAP
17" FIR, S 42 1/2 E, 4.6'
42" FIR, S 52 W, 72.1'

STANDARD CORNER SECTIONS 31 & 36
FOUND - 3" IRON PIPE WITH BRASS CAP
37" FIR, N 65 1/2 E, 72.6'
23" FIR, N 12 1/2 W, 54.0'

EAST 1/16 CORNER SECTION 1
SET - U.S.F.S. 2 1/2" ALUMINUM MONUMENT
68" FIR, S 4 E, 54.8'
29" HEMLOCK, S 68 W, 20.2'

STANDARD 1/4 CORNER SECTION 31
FOUND - 1 1/2" IRON PIPE WITH BRASS CAP
48" FIR STUMP, N 84 W, 70.8'
18" ALDER, N 57 W, 64.7'
32" FIR STUMP, N 53 W, 42.2'
10" FIR, N 11 E, 138.0'



1/4 CORNER SECTIONS 3 & 4
SET - U.S.F.S. 2 1/2" ALUMINUM MONUMENT
30" FIR, S 89 E, 84.7'
18" ALDER, N 86 W, 60.0'
(BARK SCRIBED)

S 1/16 CORNER SECTIONS 3 & 4
SET - U.S.F.S. 2 1/2" ALUMINUM MONUMENT
9" FIR, N 2 E, 15.6'
9" HEMLOCK, S 71 W, 28.0'

1/4 CORNER SECTIONS 2 & 3
FOUND - LANE COUNTY BRASS CAP IN PVC PIPE
24" FIR STUMP, N 83 E, 29.7'
7" ALDER (BARK SCRIBED), S 69 E, 18.3'
7" ALDER (BARK SCRIBED), S 39 W, 44.0'

SECTION CORNER 2,3,10 & 11
FOUND - NOTCHED STONE
50" FIR STUMP, N 65 W, 59.8'
SET - U.S.F.S. 2 1/2" ALUMINUM MONUMENT
(BURIED STONE BESIDE MONUMENT)
33" FIR STUMP, N 47 E, 66.8'
14" FIR, S 39 E, 34.0'
11" FIR, S 70 W, 46.6'

1/4 CORNER SECTIONS 2 & 11
FOUND - 2 1/2" IRON PIPE WITH BRASS CAP
35" FIR, N 27 W, 24.5'
18" FIR, S 70 W, 17.0'
20" FIR, S 52 E, 5.0'

SECTION CORNER 1,2,11 & 12
FOUND - 2 1/2" IRON PIPE WITH BRASS CAP
12" HEMLOCK, N 18 E, 19.1'
20" FIR STUB, S 13 E, 12.2'
26" HEMLOCK, S 24 W, 27.0'
25" HEMLOCK, S 86 W, 30.7'
28" HEMLOCK, N 28 W, 4.0'

1/4 CORNER SECTIONS 1 & 12
FOUND - ETCHED STONE
68" FIR, S 42 E, 34.8'
40" FIR, N 64 W, 22.2'
SET - U.S.F.S. 2 1/2" ALUMINUM MONUMENT
(BURIED STONE BESIDE MONUMENT)

CLOSING CORNER SECTIONS 6 & 7
FOUND - 2 1/2" IRON PIPE WITH BRASS CAP
STONE ETCHED "CC", N 88 E, 3.1'
15" FIR, N 56 E, 71.6'
18" FIR, S 53 E, 76.1'
16" FIR, S 10 W, 75.4'
13" FIR, N 51 W, 2.3'

H.E.S. NUMBER 203 CORNER DATA

- A.P. 16 FOUND - ETCHED STONE 40" FIR STUMP, S 79 W, 66.0' SET - U.S.F.S. 2 1/2" ALUMINUM MONUMENT (BURIED STONE BESIDE MONUMENT)
- A.P. 17 FOUND - 26" FIR STUMP, S 54 1/4 E, 36.3' SET - U.S.F.S. 2 1/2" ALUMINUM MONUMENT (BURIED STONE BESIDE MONUMENT)
- A.P. 18 FOUND - ETCHED STONE 24" FIR, N 16 W, 20.1' 34" FIR, N 51 W, 7.2' SET - U.S.F.S. 2 1/2" ALUMINUM MONUMENT (BURIED STONE BESIDE MONUMENT)
- A.P. 19 FOUND - 3 1/2" BRASS TABLET CEMENTED IN ROCK 8" ALDER (BARK SCRIBED), S 43 E, 47.0' 19" HEMLOCK, N 6 W, 27.9'
- A.P. 20 FOUND - ETCHED STONE 43" FIR, S 22 W, 25.7' SET - U.S.F.S. 2 1/2" ALUMINUM MONUMENT (BURIED STONE BESIDE MONUMENT)

- A.P. 11 FOUND - ETCHED STONE 30" FIR, N 4 E, 16.5' SET - U.S.F.S. 2 1/2" ALUMINUM MONUMENT (BURIED STONE BESIDE MONUMENT)
- A.P. 12 FOUND - ETCHED STONE 30" FIR, N 25 W, 4.7' SET - U.S.F.S. 2 1/2" ALUMINUM MONUMENT (BURIED STONE BESIDE MONUMENT)
- A.P. 13 FOUND - 22" FIR, S 59 1/4 E, 19.8' SET - U.S.F.S. 2 1/2" ALUMINUM MONUMENT (BURIED STONE BESIDE MONUMENT)
- A.P. 14 FOUND - 24" FIR STUMP, S 13 E, 50.8' SET - U.S.F.S. 2 1/2" ALUMINUM MONUMENT (BURIED STONE BESIDE MONUMENT)
- A.P. 15 FOUND - ETCHED STONE 6" FIR STUB, N 20 E, 8.1' SET - U.S.F.S. 2 1/2" ALUMINUM MONUMENT (BURIED STONE BESIDE MONUMENT)

I, DONALD L. PEEL, A REGISTERED LAND SURVEYOR IN THE STATE OF OREGON, HEREBY CERTIFY THAT THIS PLAN AND THE NOTES HEREON, ARE A CORRECT REPRESENTATION OF A SURVEY I PERFORMED DURING SEPT. 1978 / FEB. 1979, FOR CHAMPION TIMBERLANDS AND THE U.S. FOREST SERVICE, IN ACCORDANCE WITH THE STATUTES OF THE STATE OF OREGON AND WITH THE ARTICLES OF MY CONTRACT.

Ronald L. Peel

SURVEY OF SECTIONS 1,2,3, T19 S, R10 W, W.M. LANE COUNTY, OREGON FOR CHAMPION TIMBERLANDS & U.S. FOREST SERVICE BY TRIANGLE ENGINEERING COMPANY SEPT. 1978 - FEB. 1979

Rec'd from County 11/17/88

22751 3-9-79

C 563/69-3