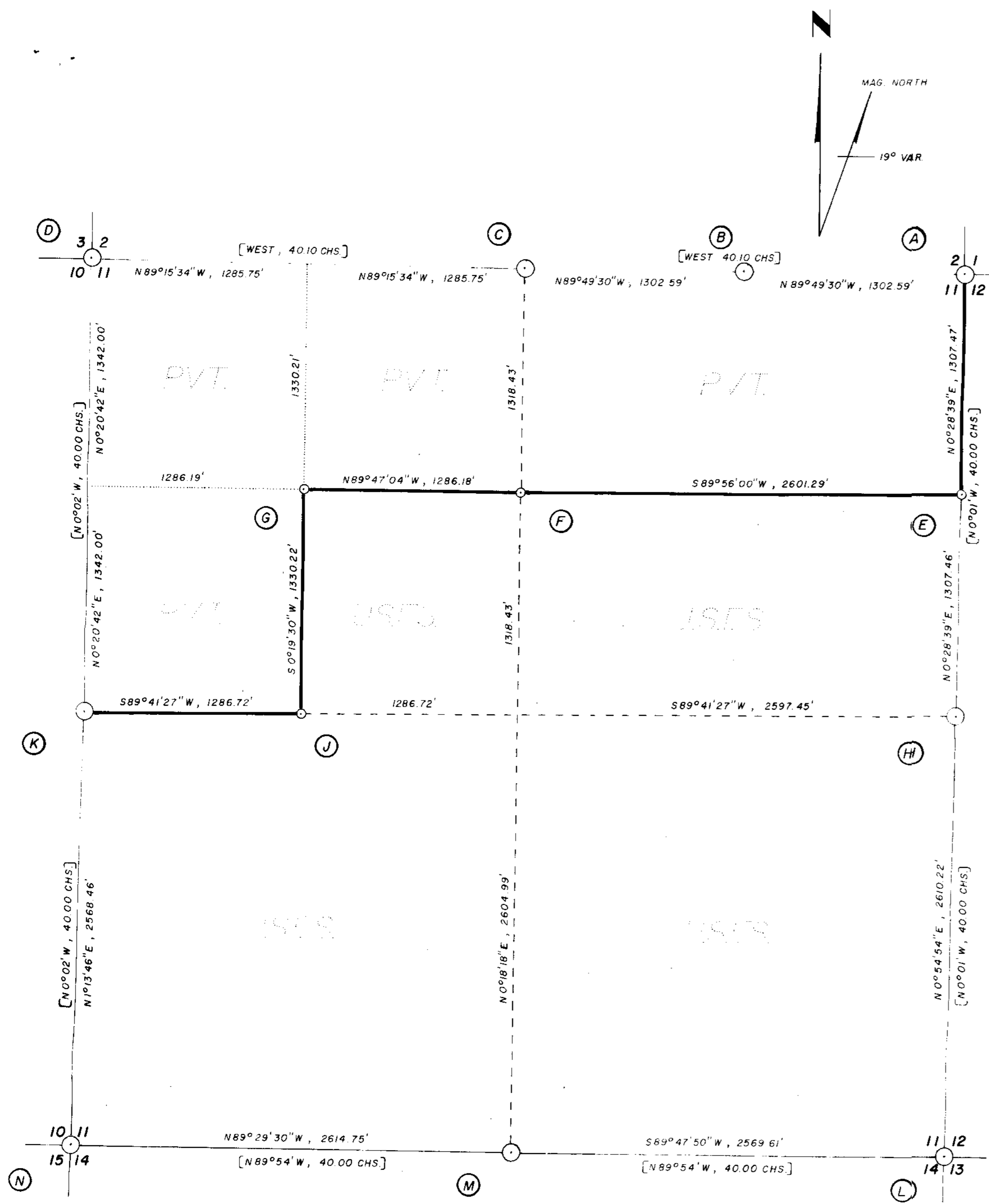


24151
6-27-80



- (A) FOUND: 2 1/2" IRON PIPE WITH BRASS CAP
12" HEMLOCK, N 18 E, 19.1'
20" FIR STUB, S 13 E, 12.2' (original)
26" HEMLOCK, S 24 W, 27.0'
25" HEMLOCK, S 86 W, 30.7'
28" HEMLOCK, N 28 W, 4.8'
- (B) FOUND: U.S.F.S. 2 1/2" ALUMINUM MONUMENT
7" FIR, N 20 W, 18.2'
6" FIR, S 58 W, 14.1'
- (C) FOUND: 2 1/2" IRON PIPE WITH BRASS CAP
35" FIR, N 27 W, 24.5'
18" FIR, S 70 W, 17.0'
20" FIR, S 52 E, 5.0'
- (D) FOUND: U.S.F.S. 2 1/2" ALUMINUM MONUMENT
33" FIR STUMP, N 47 E, 66.8'
14" FIR, S 39 E, 34.0'
11" FIR, S 70 W, 46.6'
50" FIR STUMP, N 65 W, 59.8' (original)
- (E) SET: U.S.F.S. 2 1/2" ALUMINUM MONUMENT
30" FIR, N 34 E, 24.1'
32" FIR, S 28 W, 77.5'
- (F) SET: U.S.F.S. 2 1/2" ALUMINUM MONUMENT
26" FIR, S 31 E, 46.0'
36" FIR, N 62 W, 10.6'
- (G) SET: U.S.F.S. 2 1/2" ALUMINUM MONUMENT
22" HEMLOCK, N 68 W, 10.6'
11" HEMLOCK, S 27 W, 10.5'
- (H) FOUND: 3/8" REBAR IN CENTER OF ROTTEN
ALDER STUMP HOLE
39" FIR STUMP, S 46 E, 51.2' (original)
48" FIR STUMP, N 84 W, 71.0' (original)
21" HEMLOCK STUMP, N 7 W, 17.2'
SET: U.S.F.S. 2 1/2" ALUMINUM MONUMENT
- (J) SET: U.S.F.S. 2 1/2" ALUMINUM MONUMENT
26" HEMLOCK, N 76 W, 129.3'
28" FIR, S 39 W, 101.1'
- (K) FOUND: STONE MARKED CS 1/4 S 5" X 8" X 13"
22" MAPLE (in clump of maples), S 23 W, 19.9'
SET: U.S.F.S. 2 1/2" ALUMINUM MONUMENT
(buried stone beside monument)
16" FIR, N 37 E, 62.0'
10" HEMLOCK, S 17 W, 167.1'
- (L) FOUND: 1 1/4" IRON PIPE WITH DOUGLAS COUNTY BRASS CAP
24" FIR STUMP, N 35 1/2 E, 61.5'
38" FIR STUMP, S 36 1/2 E, 56.1' (original)
30" FIR STUMP, S 6 1/2 W, 39.0' (original)
- (M) FOUND: 31" FIR, N 60 E, 20.5' (original)
FIR STUB, S 8 W, 6.6' (no scribing visible - rotted away)
SET: CEMENTED 2 1/2" BRASS TABLET IN ROCK SHELVE
32" FIR, S 81 W, 29.9'
- (N) FOUND: SQUARED & SCRIBED CEDAR POST
18" CEDAR, N 26 E, 22.4' (26.4' slope dist - original)
SEC. 14 B.T. DOWNED (scribing visible - original)
SET: U.S.F.S. 2 1/2" ALUMINUM MONUMENT
30" FIR, S 87 E, 38.3'
47" CEDAR, S 40 W, 12.4'
20" CEDAR, N 38 W, 48.5'

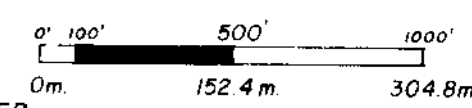
SURVEY HISTORY

SECTION 11 WAS ORIGINALLY SURVEYED BY HENRY CHANDLER IN 1895. IN 1899, HENRY CHANDLER RESURVEYED SECTION 11. THE NORTHWEST CORNER OF SECTION 11 WAS TIED BY BEN EDDY IN 1917 IN CONJUNCTION WITH H.E.S. 203 SURVEY. THE WEST 1/4 CORNER WAS TIED BY A. WAALER IN 1957. THE NORTH 1/4 CORNER AND THE NORTHEAST SECTION CORNER WERE REMONUMENTED WITH 3/8" REBAR BY A. REID IN 1958, AND AGAIN REMONUMENTED WITH 2 1/2" IRON PIPES / BRASS CAPS IN 1970 BY T. McCULLOUGH. THE EAST 1/4 CORNER WAS REMONUMENTED WITH 3/8" REBAR BY A. REID IN 1958. THE SOUTHEAST SECTION CORNER WAS REMONUMENTED WITH A 1 1/2" IRON PIPE BY A. REID IN 1958 AND AGAIN REMONUMENTED WITH 1 1/4" IRON PIPE / BRASS CAP BY DOUGLAS COUNTY SURVEYOR IN 1971. THE NORTH LINE OF SECTION 11 WAS RETRACED IN 1979 BY D. PEEL, MONUMENTING THE EAST 1/16 CORNER WITH A U.S.F.S. ALUMINUM MONUMENT AND REMONUMENTING THE NORTHWEST SECTION CORNER WITH A U.S.F.S. ALUMINUM MONUMENT.

THIS SURVEY WAS MADE DURING THE MONTHS OF APRIL AND MAY, 1980 BY DONALD L. PEEL OF TRIANGLE ENGINEERING CO., 1262 LAWRENCE, EUGENE, OREGON. CLOSED TRANSIT TRAVERSES WITH A MINIMUM ERROR OF CLOSURE OF 1/4000' WERE RUN FOR CONTROL. BEARINGS WERE BASED ON A SOLAR OBSERVATION. THE 1/16 CORNERS SET FOR THIS SURVEY WERE SET AT PROPORTIONATE DISTANCE IN ACCORDANCE TO THE MANUAL OF INSTRUCTIONS FOR THE SURVEY OF THE PUBLIC LANDS OF THE UNITED STATES. OFFSETS TO THE TRUE PROPERTY LINE WERE CALCULATED AND USED TO DETERMINE THE POSITION OF THE TRUE LINE. THE TRUE LINE WAS MARKED IN THE FIELD WITH ORANGE FIBERGLASS FENCE POSTS.

BASIS OF BEARING : SOLAR OBSERVATION

SCALE : 1" = 500'



METRIC CONVERSION - 3.2808 FT. = 1.000 METER

ALL BEARING TREES SCRIBED FOR THIS SURVEY, DISTANCES WERE CENTER MEASURE AND BEARINGS WERE MAGNETIC, VAR. 20°

- (O) CORNERS FOUND AND USED FOR CONTROL
- (O) CORNERS SET THIS SURVEY
- [] G.L.O. BEARING AND DISTANCE
- PROPERTY LINE POSTED WITH ORANGE FIBERGLASS FENCE POSTS

I, DONALD L. PEEL, A REGISTERED LAND SURVEYOR IN THE STATE OF OREGON, HEREBY CERTIFY THAT THIS PLAT AND THE NOTES HEREON, ARE A CORRECT REPRESENTATION OF A SURVEY I PERFORMED DURING APRIL AND MAY, 1980, FOR THE U.S. FOREST SERVICE, IN ACCORDANCE WITH THE STATUTES OF THE STATE OF OREGON AND WITH THE ARTICLES OF MY CONTRACT.

NOTE: SECTION CORNER 11,12,13,14 IS ROTTEN ALDER STUB
IRON PIPE WITH BRASS CAP ("L" above) BEARS
N 4°38'W, 1.30' FROM SECTION CORNER.
BEARING TREE DATA ("L" above) IS FROM IRON PIPE

FIELD NOTES ARE IN BOOKS 1 & 2
GREYBACK PAXTON CADASTRAL SURVEY
CONTRACT NUMBER 53-04H1-0-7780N

**SURVEY OF
SECTION 11, T19S, R10W, W.M.
LANE COUNTY, OREGON**

FOR
U.S. FOREST SERVICE
BY
TRIANGLE ENGINEERING CO.
MAY, 1980

*Info Rec'd
11/14/88
Hance*