

FILED
 NOV 1 1988
 COUNTY SURVEYOR
 DOUGLAS COUNTY

(B) CLOSING CORNER SECTIONS 6 & 7

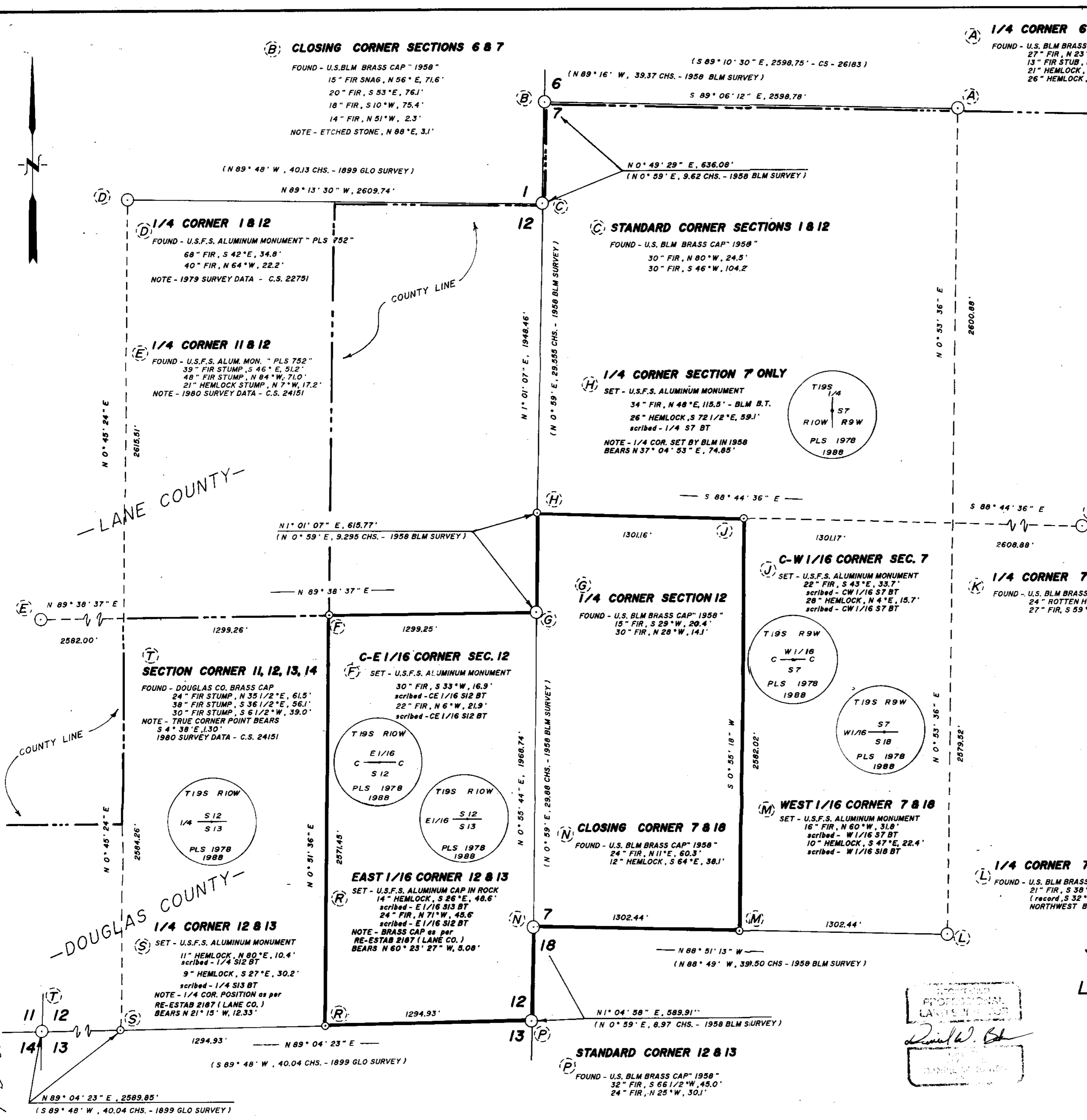
FOUND - U.S. BLM BRASS CAP 1958"
 15" FIR SNA6, N 56° E, 71.6'
 20" FIR, S 53° E, 76.1'
 18" FIR, S 10° W, 75.4'
 14" FIR, N 51° W, 2.3'
 NOTE - ETCHED STONE, N 88° E, 3.1'

(A) 1/4 CORNER 6 & 7

FOUND - U.S. BLM BRASS CAP 1958"
 27" FIR, N 23° E, 25.1' SNA6
 13" FIR STUB, N 25° E, 9.9'
 21" HEMLOCK, S 68° E, 13.8'
 26" HEMLOCK, S 29° E, 57.0'

NARRATIVE

THIS SURVEY WAS MADE IN APRIL TO SEPT., 1988 BY DANIEL W. BAKER OF PEEL BAKER LAND SURVEYING, INC., 1262 LAWRENCE ST., SUITE 4, EUGENE, OREGON, 97401. THE PURPOSE OF THIS SURVEY WAS TO LOCATE AND MARK IN THE FIELD THE PROPERTY LINES OF THE PROPERTY OF MARGARET CROWELL IN THE WEST 1/2 OF THE SOUTHWEST 1/4 OF SECTION 7, T 19 S, R 9 W, AND THE EAST 1/2 OF THE SOUTHEAST 1/4 OF SECTION 12, T 19 S, R 10 W, W.M., A KERN KIM THEODOLITE AND DM 502 E.D.M. WAS USED TO PERFORM THIS SURVEY. RANDOM TRANSIT TRAVERSES, WITH A MINIMUM ERROR OF CLOSURE OF 1" / 5,000' WERE RUN BETWEEN FOUND CORNERS FOR CONTROL AND CLOSED TRANSIT TRAVERSES WERE RUN AS CLOSE AS POSSIBLE TO THE TRUE LINE AND OFFSETS TO THE TRUE PROPERTY LINES WERE CALCULATED AND USED TO DETERMINE AND MARK THE TRUE PROPERTY LINES IN THE FIELD. BEARINGS WERE BASED ON A SOLAR OBSERVATION FROM C.S. 2275I, IN SECTION 12, T 19 S, R 10 W, THE NORTH 1/4, WEST 1/4, AND SOUTHWEST SECTION CORNERS WERE TIED IN CS 2415I AND C.S. 2275I BY TRIANGLE ENGINEERING COMPANY AND I USED THE COORDINATES FROM THIS SURVEY TO SUBDIVIDE THIS SECTION. AFTER I TIED THE NORTHEAST SECTION CORNER, EAST 1/4, AND SOUTHEAST SECTION CORNER, THE SOUTH 1/4 CORNER WAS SET AT MIDPOINT BETWEEN THE SOUTHWEST AND SOUTHEAST SECTION CORNERS. THE EAST 1/16 CORNER ON THE SOUTH LINE WAS SET AT MIDPOINT BETWEEN THE SOUTHWEST SECTION CORNER AND THE SOUTH 1/4 CORNER. THE CENTER 1/4 CORNER WAS DETERMINED (NOT SET) AT THE INTERSECTION OF THE NORTH - SOUTH AND EAST - WEST CENTERLINES. THE CENTER - EAST 1/16 CORNER WAS SET AT MIDPOINT BETWEEN THE CENTER 1/4 AND EAST 1/4 CORNER. IN SECTION 7, T 19 S, R 9 W, ALL CORNERS WERE MONUMENTED BY THE B.L.M. CADASTRAL SURVEYORS IN 1958. THE WEST 1/4 CORNER WAS FOUND TO BE OUT OF POSITION, SO I SET A NEW WEST 1/4 CORNER AT MIDPOINT LATITUDINALLY BETWEEN THE SOUTHWEST AND NORTHWEST SECTION CORNERS OF SECTION 7, T 19 S, R 9 W, W.M. THE WEST 1/16 CORNER ON SOUTH LINE WAS SET AT MIDPOINT BETWEEN THE SOUTH 1/4 CORNER AND THE SOUTHWEST SECTION CORNER OF SECTION 7. THE CENTER 1/4 CORNER WAS DETERMINED (NOT SET) AT THE INTERSECTION OF THE NORTH - SOUTH AND EAST - WEST CENTERLINES. THE CENTER - WEST 1/16 CORNER WAS SET AT MIDPOINT BETWEEN THE CENTER 1/4 AND THE WEST 1/4. THE PROPERTY LINE WAS MARKED IN THE FIELD BY BLAZING TREES (BLAZES PAINTED YELLOW) AND BY SETTING 6 FOOT FIBERGLASS POSTS MARKED "PROPERTY BOUNDARY" AT RANDOM INTERVALS ALONG THE TRUE PROPERTY. ALL CORNERS SET IN THIS SURVEY WERE MONUMENTED WITH U.S.D.A. - FOREST SERVICE ALUMINUM MONUMENTS, UNLESS OTHERWISE NOTED, AND BEARING TREES WERE MARKED ACCORDING TO THE "1973 B.L.M. MANUAL OF INSTRUCTIONS". DISTANCE TO BEARING TREES ARE TO THE SIDE CENTER OF THE TREE AND BEARINGS ARE MAGNETIC - VARIATION = 20'.



BASIS OF BEARING SOLAR OBSERVATION FROM C.S. 2275I (LANE COUNTY)

SCALE 1" = 400'

- CORNERS FOUND
- CORNERS SET (U.S.F.S. ALUMINUM MON.) 2 1/2" X 3 1/4" ALUM. PIPE W/ 3 1/4" CAP
- BLAZED AND POSTED PROPERTY LINE
- () RECORD DATA
- - - COUNTY LINE

SURVEY IN
 SE 1/4 SECTION 12 T 19 S R 10 W W.M.
 SW 1/4 SECTION 7 T 19 S R 9 W W.M.
 LANE AND DOUGLAS COUNTIES, OREGON

FOR
MARGARET CROWELL
 BY
PEEL BAKER LAND SURVEYING INC.

SEPTEMBER 19, 1988

PROFESSIONAL
 LAND SURVEYOR
 Daniel W. Baker
 1988

C.S. 63/69-1