

COUNTY SURVEYOR FILE DATA

FILED

REMOVE FROM OFFICE LOT LINE

APR 5 1990

ADJUSTMENT FOR GEORGE GIBBY IN LOTS 4 AND 5

COUNTY SURVEYOR
DOUGLAS COUNTY, ORE.

GARDEN TERRACE SUBDIVISION - PHASE 3

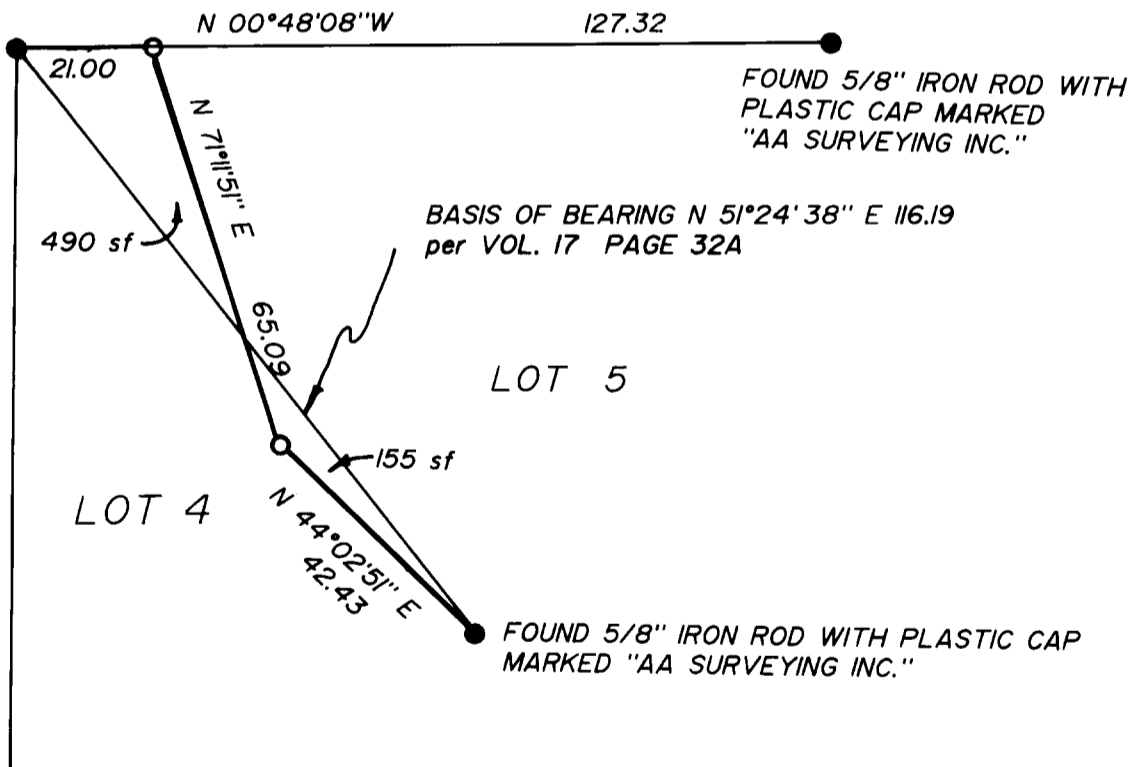
IN THE S.E. 1/4 OF SECTION 10, T27S, R6W, WM

MARCH, 1990

SCALE: 1"=30'

LEGEND

- FOUND 5/8" IRON ROD
UNLESS OTHERWISE NOTED
- SET 5/8"x30" IRON ROD WITH PLASTIC
CAP MARKED "AA SURVEYING INC."



MAP PREPARED BY:
AA SURVEYING INC.
2566 N.E. STEPHENS
ROSEBURG, OR 97470

REGISTERED
PROFESSIONAL
LAND SURVEYOR

Mark A. Heimburger

OREGON
JUL 16, 1987
MARK A. HEIMBURGER
2287

John K. Stuten 4-4-90