

FILED

1997 1998

SURVEY TO RESET PROPERTY CORNER
IN THE NE 1/4 OF SECTION 22, T.27S., R.6W., W.M.
JANUARY, 1990

COUNTY SURVEYOR
DOUGLAS COUNTY, ORE.

SURVEYED FOR:
STRITZKE CONST. CO.
224 N.E. BOGARD ST.
ROSEBURG, OR 97470

SURVEYED BY:
BAUGHMAN TECHNICAL SERVICE INC.
433 S.E. MAIN ST.
ROSEBURG, OR 97470

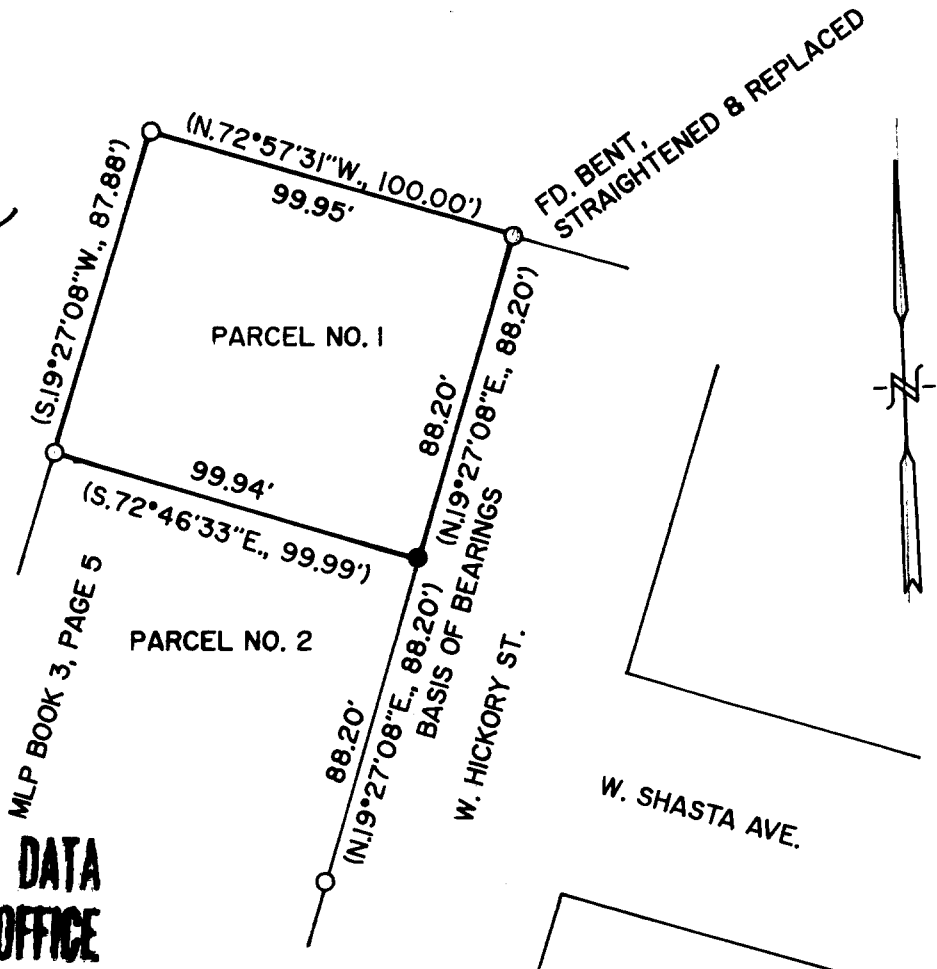
LEGEND

- = SET 5/8"X30" I.R. W/PLASTIC CAP MK'D. "BAUGHMAN TECH SERV"
- = FD. 5/8" I.R.
- () = CALLS AS PER MLP M63-55

REGISTERED
PROFESSIONAL
LAND SURVEYOR

Glenn S. Baughman

OREGON
JULY 14, 1981
GLENN S. BAUGHMAN
536



**COUNTY SURVEYORS FILE DATA
DO NOT REMOVE FROM OFFICE**

NARRATIVE:

THE FIELD WORK WAS PERFORMED BY K. DEGROOT AND L. FANNING USING A WILD TIAE THEODOLITE AND TOPCON EDM. ALL OF THE CONTROL SHOWN WAS FOUND AND CAME FROM M63-55. THE CORNER WAS ESTABLISHED ON THE DISTANCE AS SHOWN ON THE MAP AND ON A TRUE LINE BETWEEN FOUND POINTS. CALCULATIONS BY G. BAUGHMAN AND DRAFTING BY G. BAUGHMAN.