

M105-28

FILED

SK

DEC 29 1987

OREGON CORNER RESTORATION FORM

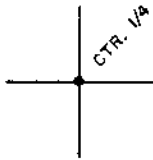
Section 9 Township 22S Range 12W

COUNTY SURVEYOR
DOUGLAS COUNTY, ORE.

County Douglas Date 04-27-87

CORNER DESIGNATION

Center $\frac{1}{4}$ Corner
Section 9



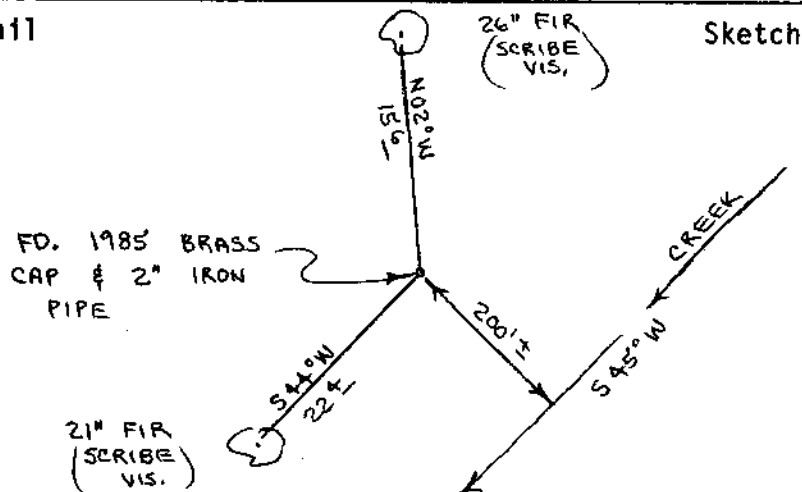
- Condition Report Only
- Not Found
- Renewed
- Unrecorded
- Surveyed In
- Referenced Out

Previous Renewals/Surveys, etc. Original G.L.O. Surveys by Harvey Gordon in 1857 and by William Thiel in 1889. Survey M98-54 by Ron Stuntzner in 1985.

Monument(s) & Accessories Found: (Condition and Source)

Found 1985 Brass Cap and 2" iron pipe set in C.S. M98-54
21" Fir, S44W, 22.4' (Scribe Vis.), 1985 BT. Record S44W, 22.4'
26" Fir, N02W, 15.6' (Scribe Vis.), 1985 BT. Record N02W, 15.6'

Monument Detail



Monument Set (Procedures and Description)

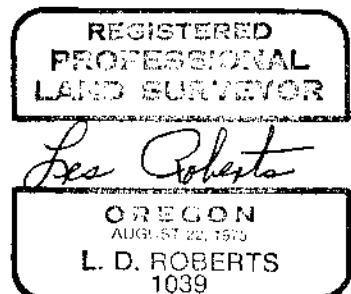
New Accessories

None

Location & Comments

Corner lies on S.E. slope about 200 feet N.W. of creek bottom
Compass Declination 20 $\frac{1}{2}$
Firm/Agency Roberts Surveying Inc.
Address 29 west 29th St. Eugene, Oregon 97405
Party Chief Ted Baker
Notes
Witness Jim Metzler

Surveyor's Seal



C.S. File No. 63/55-14