

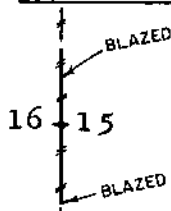
OREGON CORNER RESTORATION FORM

Section 16 Township 22S Range 12W

County Douglas Date 9-21-87

CORNER DESIGNATION

North 1/16 Corner
Section 16



- Condition Report Only
- Not Found
- Renewed
- Unrecorded
- x Surveyed In
- Referenced Out

Previous Renewals/Surveys, etc. Original G.L.O. Survey by William Thiel in 1889. Survey M92-57 by Robert Ward in 1982.

Monument(s) & Accessories Found: (Condition and Source)

No monument found.

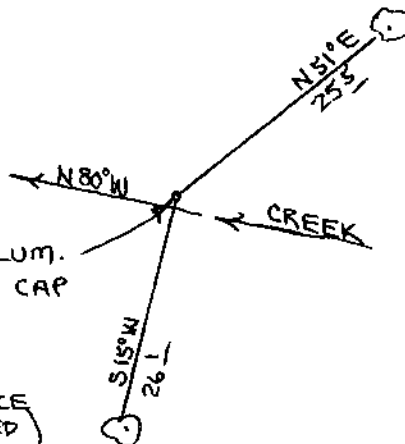
Monument Detail

Sketch



SET 5/8" x 60" ALUM. ROD WITH ALUM. CAP

22" SPRUCE (SCRIBED)



13" ALDER (BARK SCRIBED)

Monument Set (Procedures and Description)

Set 5/8" x 60" Aluminum rod with 3 1/4" aluminum cap. Buried purple magnetic marker beside 60" aluminum rod. Set 60" aluminum post, with land survey monument sign attached to, beside aluminum cap.

New Accessories

13" Alder, N51E, 25.5' (Bark Scribed/Painted Red)

22" Spruce, S15W, 26.1' (Scribed/Painted Red)

Location & Comments

Corner falls on North Compass Declination 20 1/2
of small creek. Creek Firm/Agency Roberts
bears N80W and S80E. Surveying Inc.
Address 29 West 29th ST.
Eugene, Oregon 97405
Party Chief Ted Baker
Notes
Witness Jim Metzler

Surveyor's Seal

