

FILED

Handwritten initials

DEC 21 1987

OREGON CORNER RESTORATION FORM

Section 2 Township 21S Range 8W

County Douglas Date 6-05-87

COUNTY SURVEYOR
DOUGLAS COUNTY, ORE.

CORNER DESIGNATION

West 1/16 Corner
Section 2

2
|
11

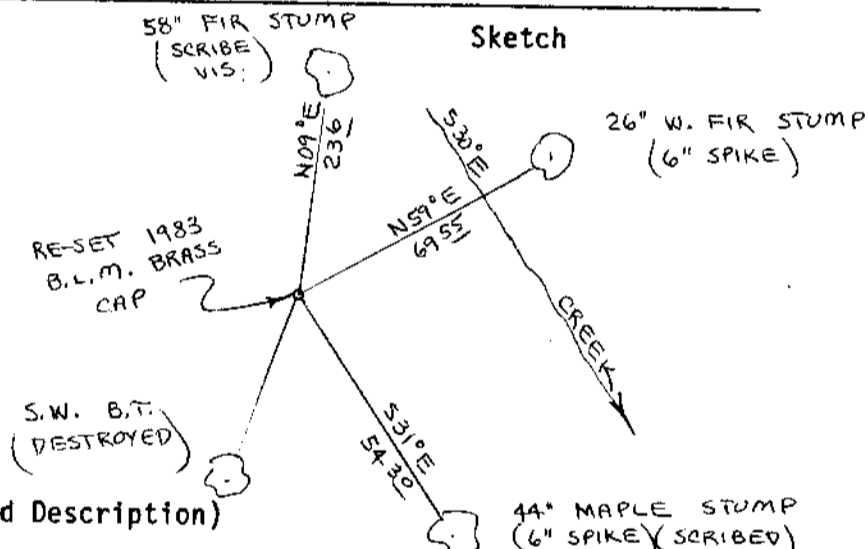
- Condition Report Only
- Not Found
- Renewed
- Unrecorded
- Surveyed In
- Referenced Out

Previous Renewals/Surveys, etc. Original G.L.O. Survey by William P. Wright in 1883. Thomas A. Tillman and Joseph S. Gawron G.L.O. Survey in 1952-1954. Also a 1983 B.L.M. Survey.

Monument(s) & Accessories Found: (Condition and Source)

Found 1983 B.L.M. Brass Cap up-rooted by recent logging activity.
58" Fir Stump, N09E, 23.6' (Scribe Vis.), 1983 B.T. Rec. N06E, 23.1'
26" W. Fir Stump, N59E, 69.55' to 6" spike in base. 8-21-85 R.P.
44" Maple Stump, S31E, 54.30' to 6" spike in base. 8-21-85 R.P.
1983, S.W. bearing tree was destroyed by logging.

Monument Detail



Monument Set (Procedures and Description)

Re-set 1983 B.L.M. Brass Cap firmly in ground using distances of 69.55' and 54.30' from 6" spikes set in 8-21-85. Buried purple magnetic marker under iron pipe. Set aluminum fence post, with land survey monument sign attached to, beside brass cap. Painted all B.T.'s red.

New Accessories

44" Maple Stump, S31E, 54.30' to 6" spike (Scribed/Painted red)

Location & Comments

Corner lies on slight S.E. slope about 55'
West of small creek. Creek bears S30E.
Compass Declination 20 1/2
Firm/Agency Roberts Surveying Inc.
Address 29 west 29th St. Eugene, Oregon 97405
Party Chief Ted Baker
Notes
Witness Jim Metzler

Surveyor's Seal

REGISTERED PROFESSIONAL LAND SURVEYOR

Lisa Roberts

OREGON
AUGUST 22, 1975
L. D. ROBERTS
1039