

FILED

DEC 21 1987

OREGON CORNER RESTORATION FORM

Section 2 Township 21S Range 8W

County Douglas Date 8-21-85

COUNTY SURVEYOR
DOUGLAS COUNTY, ORE.

CORNER DESIGNATION

west 1/16 Corner
Section 2

2
11

- Condition Report Only
- Not Found
- Renewed
- Unrecorded
- Surveyed In
- Referenced Out

Previous Renewals/Surveys, etc. Original G.L.O. Survey by William P. Wright in 1883. Thomas A. Tillman and Joseph S. Gawron G.L.O. Survey in 1952-1954. Also a 1983 B.L.M. survey.

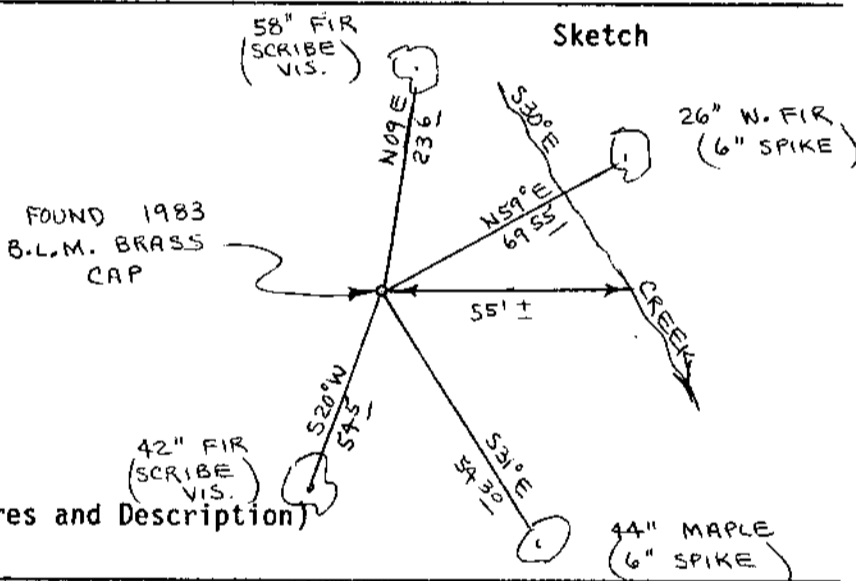
Monument(s) & Accessories Found: (Condition and Source)

Found 1983 B.L.M. Brass Cap set firmly in ground.

42" Fir, S20W, 54.5' (Scribe Vis.), 1983 BT. Rec. S21W, 54.1'

58" Fir, N09E, 23.6' (Scribe Vis.), 1983 BT. Rec. N06E, 23.1'

Monument Detail



Monument Set (Procedures and Description)

New Accessories

Set additional corner R.P.'s because of planned logging activity in near future.

26" w. Fir, N59E, 69.55' to 6" spike driven in base of tree.

44" Maple, S31E, 54.30' to 6" spike driven in base of tree.

Location & Comments

Corner lies on slight S.E. slope about 55'
West of small creek. Creek bears S30E
Compass Declination 20 1/2
Firm/Agency Roberts Surveying Inc.
Address 29 West 29th St. Eugene, Oregon 97405
Party Chief Ted Baker
Notes
Witness Stu Duce

Surveyor's Seal



C.S. File No. 63/50-26