

FILED

DEC 21 1987

OREGON CORNER RESTORATION FORM

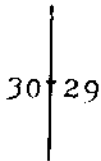
Section 30 Township 20S Range 9W

County Douglas Date 9-14-87

COUNTY SURVEYOR  
DOUGLAS COUNTY, ORE.

CORNER DESIGNATION

North 1/16 Corner  
between sections  
30 and 29.



- Condition Report Only
- Not Found
- Renewed
- Unrecorded
- Surveyed In
- Referenced Out

Previous Renewals/Surveys, etc. Original G.L.O. Survey by William Thiel in 1891. Thomas A. Tillman and Joseph S. Gawron G.L.O. Survey in 1953-1954. Survey M90-28 by Roberts Surveying in 1982.

Monument(s) & Accessories Found: (Condition and Source)

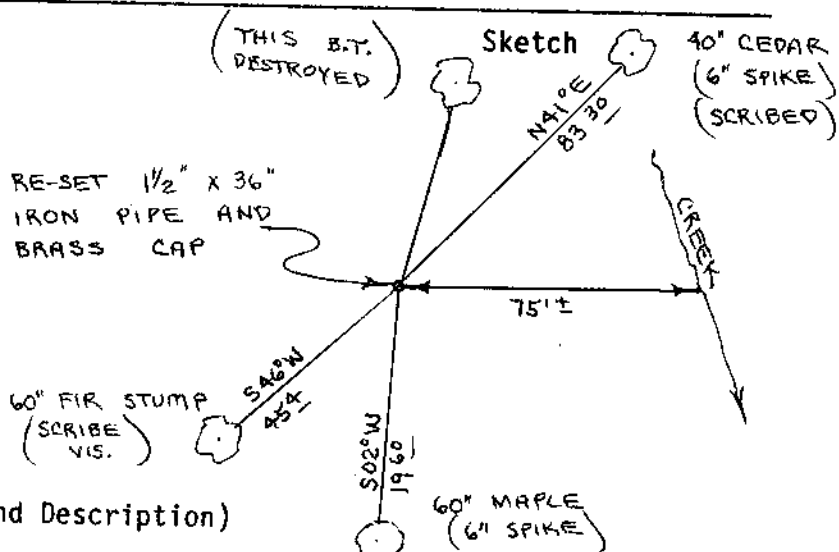
Found 1 1/2" x 36" iron pipe and brass cap, set in survey M90-28, up-rooted by recent logging.

60" Fir Stump, S46W, 45.4' (Scribe Vis.), 1982 BT. Rec. S46W, 45.4'

40" Cedar, N41E, 83.30' to 6" spike in base. 8-21-85 R.P.

60" Maple, S02W, 19.60' to 6" spike in base. 8-21-85 R.P.

Monument Detail



Monument Set (Procedures and Description)

Re-set 1 1/2" x 36" iron pipe and brass cap firmly in ground using distances of 83.30' and 19.60' from 6" spikes set in 8-21-85.

Buried purple magnetic marker under 36" iron pipe. Set aluminum fence post, with land survey monument sign attached to, beside iron pipe. Painted all B.T.'s red.

New Accessories

Drove 6" spike into base of 40" Cedar and set new B.T.

40" Cedar, N38E, 83.3' to spike (Scribed/Painted Red)

Location & Comments

Corner lies on East slope about 75' West of small creek. Compass Declination 20 1/2  
Firm/Agency Roberts Surveying Inc.  
Address 29 West 29th St. Eugene, Oregon 97405  
Party Chief Les Roberts  
Notes  
Witness Ted Baker

Surveyor's Seal



C.S. File No. 63/50-23