

FILED

DEC 21 1987

OREGON CORNER RESTORATION FORM

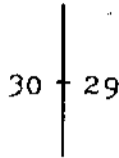
Section 30 Township 20S Range 9W

County Douglas Date 8-21-85

COUNTY SURVEYOR
DOUGLAS COUNTY, ORE.

CORNER DESIGNATION

North 1/16 Corner
between sections
30 and 29.



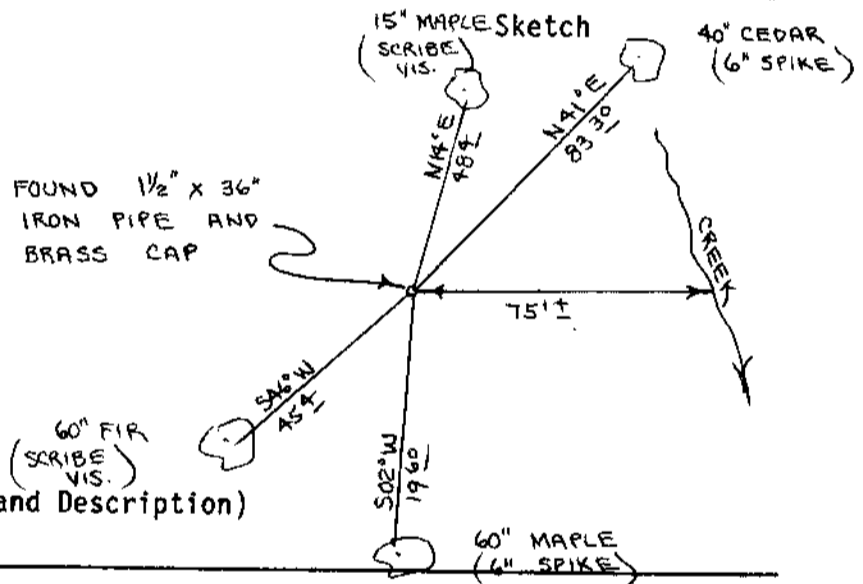
- Condition Report Only
- Not Found
- Renewed
- Unrecorded
- Surveyed In
- Referenced Out

Previous Renewals/Surveys, etc. Original G.L.O. Survey by William Thiel in 1891. Thomas A. Tillman and Joseph S. Gawron G.L.O. Survey in 1953-1954. Survey M90-28 by Roberts Surveying in 1982.

Monument(s) & Accessories Found: (Condition and Source)

Found 1 1/2" x 36" iron pipe and brass cap set in survey M90-28.
15" Maple, N14E, 48.4' (Scribe Vis.), 1982 BT. Record N14E, 48.4'
60" Fir, S46W, 45.4' (Scribe Vis.), 1982 BT. Record S46W, 45.4'

Monument Detail



Monument Set (Procedures and Description)

New Accessories

Set additional corner R.P.'s because of planned logging activity in near future.

- 40" Cedar, N41E, 83.30' to 6" spike driven in base of tree.
- 60" Maple, S02W, 19.60' to 6" spike driven in base of tree.

Location & Comments

Corner lies on East Compass Declination 20 1/2
slope about 75' West Firm/Agency Roberts
of small creek. Surveying Inc.
Address 29 west 29th St.
Eugene, Oregon 97405
Party Chief Ted Baker
Notes
Witness Stu Duce

Surveyor's Seal

