

FILED

DEC 21 1987

OREGON CORNER RESTORATION FORM

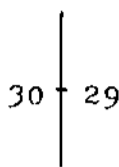
Section 30 Township 20S Range 9W

County Douglas Date 9-14-87

COUNTY SURVEYOR
DOUGLAS COUNTY, ORE.

CORNER DESIGNATION

East $\frac{1}{4}$ Corner
Section 30



- * Condition Report Only
- Not Found
- Renewed
- Unrecorded
- Surveyed In
- Referenced Out

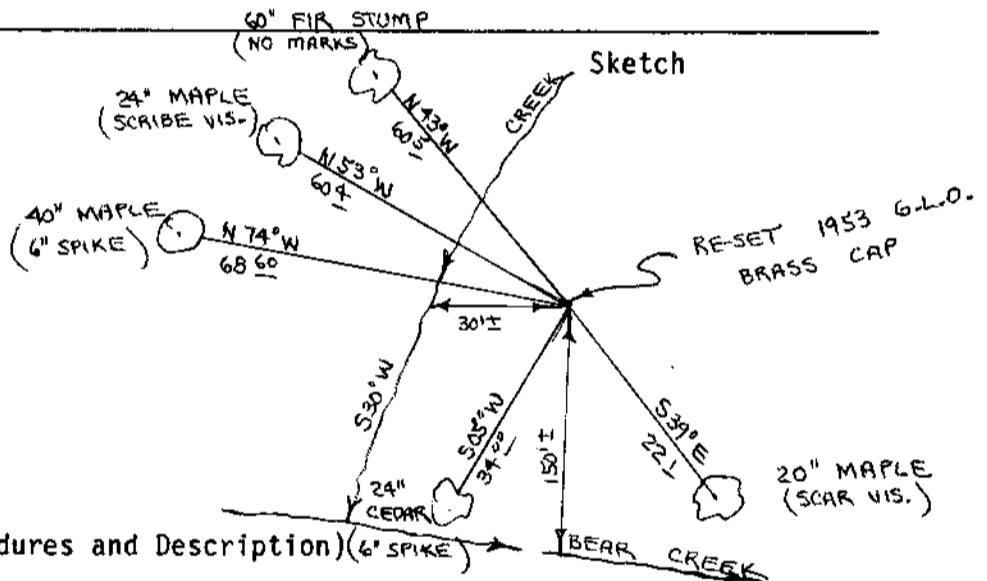
Previous Renewals/Surveys, etc. Original G.L.O. Survey by William Thiel in 1891. Thomas A. Tillman and Joseph S. Gawron G.L.O. Survey in 1953-1954. Survey M90-28 by Roberts Surveying in 1982.

Monument(s) & Accessories Found: (Condition and Source)

Found 1953 G.L.O. Brass Cap bent over from recent logging activity.

- 60" Fir Stump, N43W, 60.5' (No Marks), 1877 BT. Rec. N44 $\frac{1}{2}$ W, 58.1'
- 20" Maple, S39E, 22.1' (Scar Vis.), 1953 BT. Rec. S36 E, 23.1'
- 24" Maple, N53W, 60.4' (Scribe Vis.), 1953 BT. Rec. N53 W, 59.4'
- 24" Cedar, S05W, 34.00' to 6" spike in base. 8-21-85 R.P.
- 40" Maple, N74W, 68.60' to 6" spike in base. 8-21-85 R.P.

Monument Detail



Monument Set (Procedures and Description) Re-set 1953 G.L.O. Brass Cap firmly in ground using distances of 34.00' and 68.60' from 6" spikes set in 8-21-85. Buried purple magnetic marker under iron pipe. Set aluminum fence post, with land survey monument sign attached to, beside brass cap. Painted all B.T.'s red.

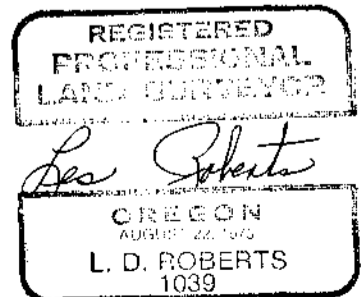
New Accessories

- Drove 6" spikes into base of 1953 G.L.O. Bearing trees.
- 20" Maple, S39E, 21.8' to 6" spike.
- 24" Maple, N53W, 61.2' to 6" spike.

Location & Comments

Corner lies about 150' Compass Declination 20 $\frac{1}{2}$
North of Bear Creek Firm/Agency Roberts
and about 30' East of Surveying Inc.
small side creek Address 29 West 29th St.
Eugene, Oregon 97405
Party Chief Les Roberts
Notes
Witness Ted Baker

Surveyor's Seal



#624

C.S. File No. 63/50-210