

FILED

DEC 21 1987

OREGON CORNER RESTORATION FORM

Section 28 Township 20S Range 9W

County Douglas Date 11-04-85

COUNTY SURVEYOR
DOUGLAS COUNTY, ORE.

CORNER DESIGNATION

Reference Monument
to S.W. Corner
Section 28

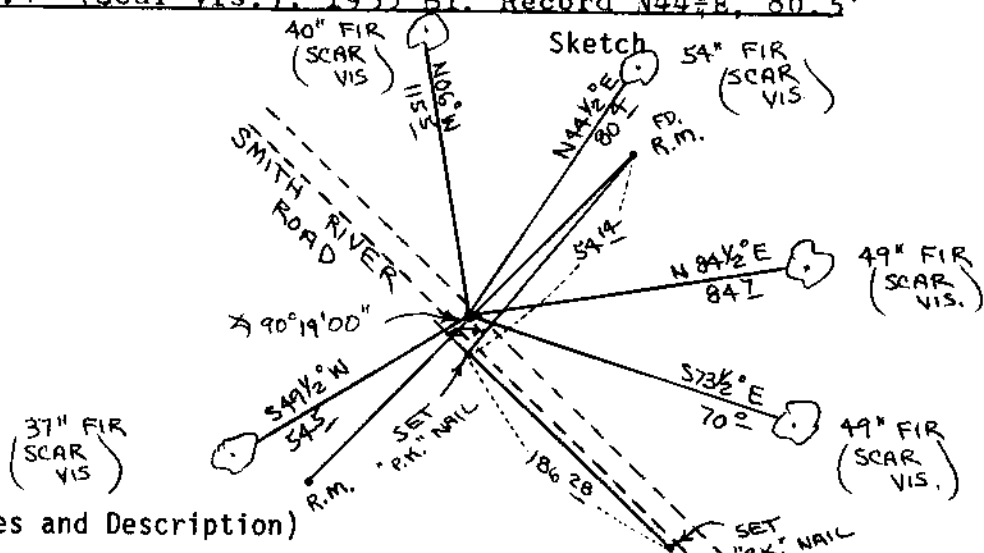
- Condition Report Only
- Not Found
- Renewed
- Unrecorded
- Surveyed In
- Referenced Out

Previous Renewals/Surveys, etc. Thomas A. Tillman and Joseph S. Gawron G.L.O. Survey in 1953-1954. Survey by Roberts Surveying dated September 12, 1983, see Map M95-23.

Monument(s) & Accessories Found: (Condition and Source)

- S.W. Corner of Section 28 falls in Smith River Road.
- 1953 G.L.O. Brass Cap R.M. bears N 44° 53' 45" E, 59.04'
- 1953 G.L.O. Brass Cap R.M. bears S 44° 53' 45" W, 59.04'
- 37" Fir, S49½W, 54.5' (Scar Vis.), 1953 BT. Record S50W, 54.8'
- 40" Fir, N06* , 115.5' (Scar Vis.), 1953 BT. Record N13° 3/4W, 115.5'
- 49" Fir, S73½E, 70.0' (Scar Vis.), 1953 BT. Record S73½E, 70.0'
- 49" Fir, N84½E, 84.7' (Scar Vis.), No Record
- 54" Fir, N44½E, 80.4' (Scar Vis.), 1953 BT. Record N44½E, 80.5'

Monument Detail



Monument Set (Procedures and Description)

Set additional corner R.P.'s because of planned logging activity in near future. See sketch

New Accessories

Location & Comments

Compass Declination 20½
 Firm/Agency Roberts Surveying Inc.
 Address 29 west 29th St. Eugene, Oregon 97405
 Party Chief Les Roberts
 Notes _____
 Witness Ted Baker

Surveyor's Seal



C.S. File No. 63/50-19