

FILED

DEC 21 1987

OREGON CORNER RESTORATION FORM

Section 28 Township 20S Range 9W

COUNTY SURVEYOR
DOUGLAS COUNTY, ORE.

County Douglas Date 9-14-87

CORNER DESIGNATION

- Condition Report Only
- Not Found
- Renewed
- Unrecorded
- Surveyed In
- Referenced Out

Reference Monument
to S.W. Corner
Section 28.

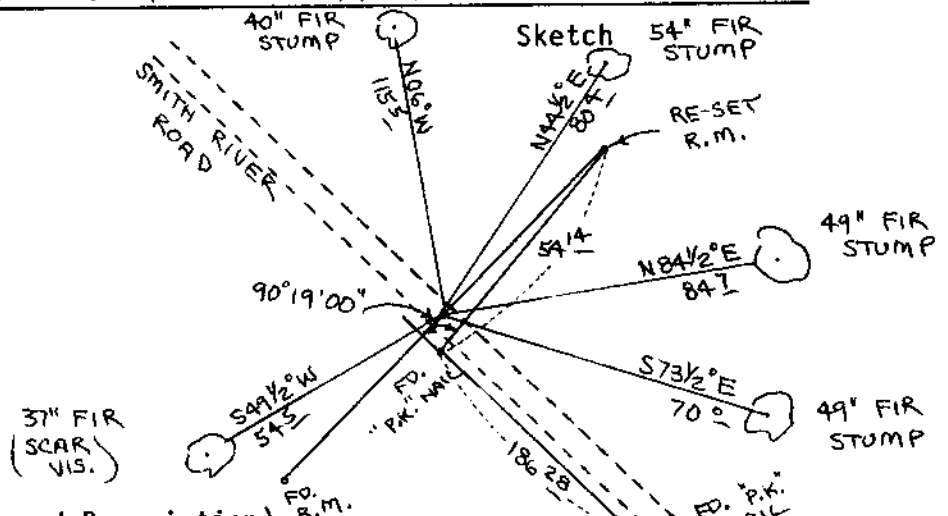
Previous Renewals/Surveys, etc. Thomas A. Tillman and Joseph S. Gawron G.L.O. Survey in 1953-1954. Survey by Roberts Surveying dated September 12, 1983. See Map M95-23.

Monument(s) & Accessories Found: (Condition and Source)

N.E. Reference Monument has been up-rooted by recent logging activity.

- 1953 G.L.O. Brass Cap R.M. bears S 44° 53' 45" W, 59.04'
- 37" Fir, S49½W, 54.5' (Scar Vis.), 1953 BT. Rec. S50W, 54.8'
- 40" Fir Stump, N06W, 115.5' (Scar Vis.), 1953 BT. Rec. N13 3/4W, 115.5'
- 49" Fir Stump, S73½E, 70.0' (Scar Vis.), 1953 BT. Rec. S73½E, 70.0'
- 49" Fir Stump, N84½E, 84.7' (Scar Vis.), No Record
- 54" Fir Stump, N44½E, 80.4' (Scar Vis.), 1953 BT. Rec. N44½E, 80.5'

Monument Detail



Monument Set (Procedures and Description)

Re-set N.E. Reference Monument using "P.K." nail R.P.'s set on 11-04-85. Buried purple magnetic marker under iron pipe. Set metal fence post, with land survey monument sign attached to, beside brass cap.

New Accessories

Location & Comments

Surveyor's Seal

Compass Declination 20½
 Firm/Agency Roberts Surveying Inc.
 Address 29 West 29th St. Eugene, Oregon 97405
 Party Chief Ted Baker
 Notes _____
 Witness Jim Metzler



U.S. File No. 63/50-18

#63x