

FILED

*Handwritten initials*

DEC 21 1987

OREGON CORNER RESTORATION FORM

Section 26 Township 20S Range 9W

County Douglas Date 9-14-87

COUNTY SURVEYOR  
DOUGLAS COUNTY, ORE.

CORNER DESIGNATION

South  $\frac{1}{4}$  Corner  
Section 26

26  
35

- Condition Report Only
- Not Found
- Renewed
- Unrecorded
- Surveyed In
- Referenced Out

Previous Renewals/Surveys, etc. Thomas A. Tillman and Joseph S. Gawron G.L.O. Survey in 1953-1954. Jelly and Bill Glenn Survey in 1968. Survey M96-20 by Roberts Surveying in 1984.

Monument(s) & Accessories Found: (Condition and Source)

Found 1953 G.L.O. Brass Cap pulled out of ground by recent logging activity.

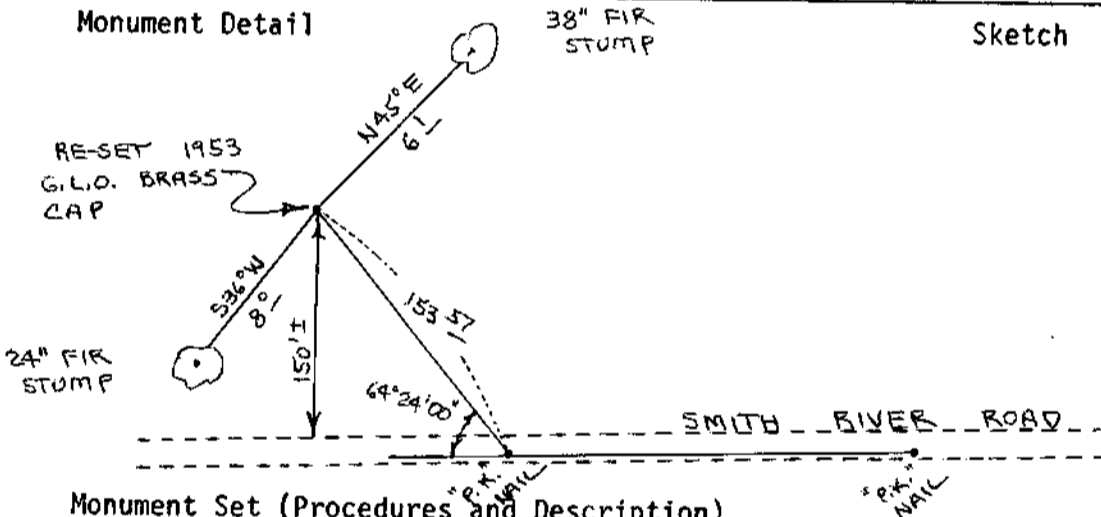
24" Fir Stump, S36W, 8.0', 1953 BT. Record S36 3/4W, 7.9'

38" Fir Stump, N45E, 6.1', 1953 BT. Record N45 1/2 E, 5.9'

Monument Detail

38" FIR STUMP

Sketch



Monument Set (Procedures and Description)

Re-set 1953 G.L.O. Brass Cap firmly in ground using "P.K." nails set in 8-21-85. Buried purple magnetic marker under iron pipe. Set metal fence post, with survey attention sign wired to, beside brass cap. Painted B.T. stumps red.

New Accessories

None Set

Location & Comments

Corner lies on flat ground about 150' North of Smith River Road. Compass Declination 20 1/2  
Firm/Agency Roberts Surveying Inc.  
Address 29 West 29th St. Eugene, Oregon 97405  
Party Chief Les Roberts  
Notes  
Witness Ted Baker

Surveyor's Seal

REGISTERED  
PROFESSIONAL  
LAND SURVEYOR

*Les Roberts*  
OREGON  
AUGUST 22, 1975  
L. D. ROBERTS  
1039

C.S. File No. 63/50-15

#61 x

C