

FILED

*JR*

DEC 21 1987

OREGON CORNER RESTORATION FORM

Section 26 Township 20S Range 9W

COUNTY SURVEYOR  
DOUGLAS COUNTY, ORE.

County Douglas Date 8-21-85

CORNER DESIGNATION

South  $\frac{1}{4}$  Corner  
Section 26

26  
+  
35

- Condition Report Only
- Not Found
- Renewed
- Unrecorded
- Surveyed In
- Referenced Out

Previous Renewals/Surveys, etc. Thomas A. Tillman and Joseph S. Gawron G.L.O. Survey in 1953-1954. Jelly and Bill Glenn Survey in 1968. Survey M96-20 by Roberts Surveying in 1984.

Monument(s) & Accessories Found: (Condition and Source)

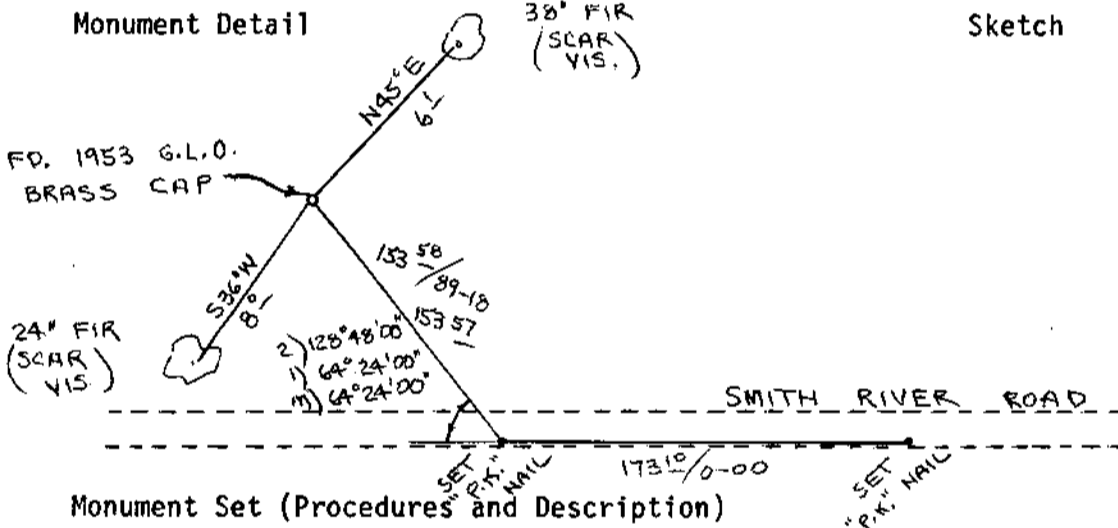
Found 1953 G.L.O. Brass Cap set firmly in ground. Found steel fence post set by Jelly and Glenn in 1967, with survey attention sign wired to, beside brass cap.

24" Fir, S36W, 8.0' (Scar Vis.), 1953 BT. Record S36 3/4W, 7.9'  
38" Fir, N45E, 6.1' (Scar Vis.), 1953 BT. Record N45 1/2 E, 5.9'

Monument Detail

38" FIR  
(SCAR VIS.)

Sketch



Monument Set (Procedures and Description)

New Accessories

Set additional corner R.P.'s because of planned logging activity in near future. Set "P.K." nails in asphalt on edge of Smith River Road, see sketch.

Location & Comments

Corner lies on flat ground about 150' North of Smith River Road. Corner is in 100-200 year old green timber

Compass Declination 20 1/2  
Firm/Agency Roberts Surveying Inc.  
Address 29 West 29th St. Eugene, Oregon 97405  
Party Chief Ted Baker  
Notes \_\_\_\_\_  
Witness Stu Duce

Surveyor's Seal

REGISTERED PROFESSIONAL LAND SURVEYOR

*L. D. Roberts*

OREGON  
AUGUST 22, 1975  
L. D. ROBERTS  
1039