

FILED

JL

MAY 29 1987

OREGON CORNER RESTORATION FORM

Section 36 Township 22S Range 10W

County DOUGLAS Date 4/10/87

COUNTY SURVEYOR
DOUGLAS COUNTY, ORE.

Corner Designation

STANDARD SECTION CORNER
SECTIONS 31 & 36

- Condition Report Only
- Not Found
- Renewed
- Unrecorded
- Surveyed In
- Referenced Out

Previous Renewals/Surveys, etc.

1878-660 SURVEY, 1894 660 SURVEY, OSBF - CS 55/68

Monument(s) & Accessories Found: (Condition and Source)

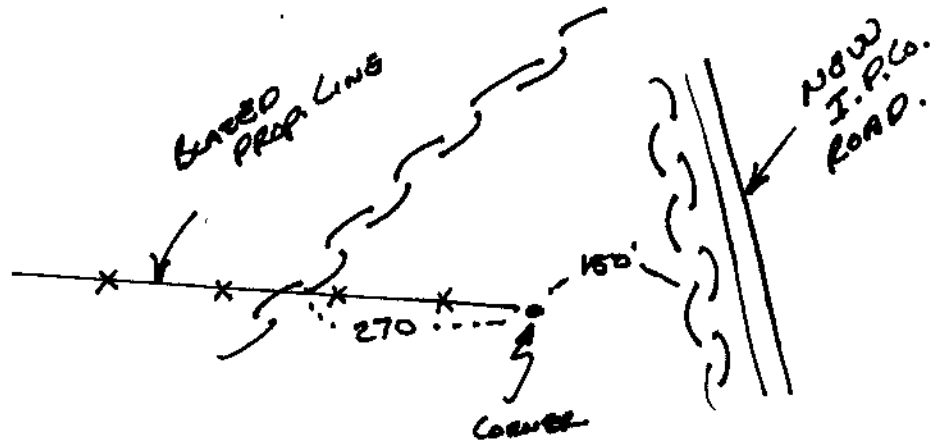
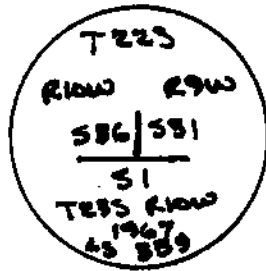
OREGON STATE BOARD OF FORESTRY BRASS CAP "1967"
AND MONUMENT OF ROCKS (GOOD CONDITION)

18" FIR, N 72 3/4° E, 24.7' - OSBF (GOOD CONDITION)

30" FIR, N 22 3/4° W, 21.3' - OSBF (GOOD CONDITION)

Monument Detail

Sketch



Monument Set (Procedures and Description)

New Accessories

Location & Comments

CORNER LIES 150'
WEST OF A MAIN
RIDGE RUNNING
NW & SE AND A
NEW I.P.L.O. ROAD
IS ON EAST SIDE
OF RIDGE

Compass Declination 20°
Firm/Agency PEEL BAKER
LAND SURVEYING
Address 1262 LAWRENCE ST.
SUITE 4, EUGENE, OR.
Party Chief DAN BAKER
Notes _____
Witness DARYL STANLEY

Surveyor's Seal

