

FILED

7/2

MAY 29 1987 TF

OREGON CORNER RESTORATION FORM

Section 36 Township 22S Range 10W

County DOUGLAS Date 4/10/87

COUNTY SURVEYOR
DOUGLAS COUNTY, ORE. TF

Corner Designation

SOUTH 1/4 CORNER
SECTION 36 ONLY

- Condition Report Only
- Not Found
- Renewed
- Unrecorded
- Surveyed In
- Referenced Out

Previous Renewals/Surveys, etc.

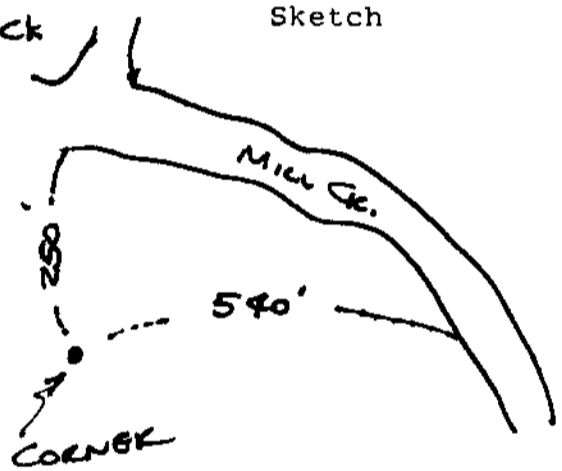
1878 GLO SURVEY, 1894 GLO SURVEY

Monument(s) & Accessories Found: (Condition and Source)

Monument Detail

CAMP CK

Sketch



Monument Set (Procedures and Description)

5/8" X 30" ALUMINUM ROD & J.P. G. CAP

18" FIR, N4°E, 38.1' - SCRIBED 1/4 536 BT

18" FIR, N80°E, 38.6' - SCRIBED 1/4 536 BT

New Accessories

Location & Comments

CORNER LIES 540' WEST
OF MILL CK AND
250' SOUTH OF MILL
CK AT ITS JCT
WITH CAMP CK.

6 FT ALUM. FENCE
POST ALONG S. 106

Compass Declination 20°

Firm/Agency DAVE BAKER

LAND SURVEYING

Address 1262 LANCASTER ST

SUGONG OREGON

Party Chief DAN BAKER

Notes

Witness DARYL STANLEY

Surveyor's Seal

REGISTERED
PROFESSIONAL
LAND SURVEYOR

Daniel W. Baker

OREGON
JULY 18, 1982
DANIEL W. BAKER
1978