

FILED

MAR 9 1987

COUNTY SURVEYOR
DOUGLAS COUNTY, ORE.

STEPHENS

1952

INDEX

| Page | Description |
|-------|--|
| 1-3 | N from $\frac{1}{4}$ Sec Cor bet 11/12 T23S R12W |
| 3- | Dis. Sec cor $\frac{1}{16}$ " " |
| 4-5 | East bet $\frac{1}{12}$ T23S R12W |
| 5- | Dis. Sec cor $\frac{1}{16}$ T23S R11/12W |
| 6-10 | N from Sec cor $\frac{1}{16}$ Bet Sec 1/6 |
| 6- | Dis S $\frac{1}{16}$ cor bet 1/6 T23S R11/12W |
| 9- | " N $\frac{1}{16}$ cor bet 1/6 T23S R11/12W |
| 10- | Dis Cor $\frac{1}{16}$ T23S R11/12W - |
| 11-14 | North bet S. 2/1 T23S R12W |
| 11- | Dis W.C. Cor to $\frac{1}{4}$ cor bet 2/1 T23S R12W |
| 12- | " $\frac{1}{4}$ cor bet 2/1 T23S R12W - |
| 13- | N $\frac{1}{16}$ cor bet 2/1 " " |
| 14- | Dis Cor 2/1 T23S R12W (NW Cor S1) |
| 15-17 | East bet $\frac{1}{12}$ T23S R12W - |
| 17- | Dis $\frac{1}{4}$ Sec Cor bet $\frac{1}{12}$ T23S R12W - |
| 18-20 | N from $\frac{1}{4}$ Sec Cor S19 only T24S R11W - |
| 21- | East bet $\frac{1}{12}$ T23S R12W Continued |
| 21- | Dis E $\frac{1}{16}$ cor bet $\frac{1}{12}$ T23S R12W |

NORTH FROM COR BETWEEN SEC 11/12 T235 N/12

| ① STA | SLOPE | HORIZ | BEAR | INTSTA | ABNY |
|--------------------|------------------|------------------|------|--------|------|
| 12+30 ⁰ | 205 ⁰ | 121 ⁰ | | | LEV |
| 4+09 ⁰ | 300 ⁰ | 300 ⁰ | | INTSTA | LEV |
| 6+04 ⁰ | 211 ⁰ | 179 ⁰ | | | -62 |
| 4+24 ⁵ | 60 ⁰ | 52 ⁴ | | | -56 |
| 3+72 ¹ | 59 ⁰ | 58 ³ | | | -15 |
| 3+13 ³ | 40 ⁰ | 39 ² | | | +20 |
| 2+74 ⁶ | 94 ⁰ | 80 ⁵ | | | -62 |
| 1+94 ¹ | 41 ⁰ | 39 ² | | | -31 |
| 1+54 ⁰ | 92 ⁰ | 87 ⁰ | | | +35 |
| 0+67 ² | 36 ⁰ | 31 ⁷ | | | +54 |
| 0+36 ² | 46 ⁰ | 36 ² | | | +74 |
| 0+00 | | | | | |

LEAVE BOTTOM LAND

True Dir = 18° E
 Tan = .00635
 = 00° 22'

CROSS STREAM GET WIDE

OFFSET 4 FT W-IF W LINE

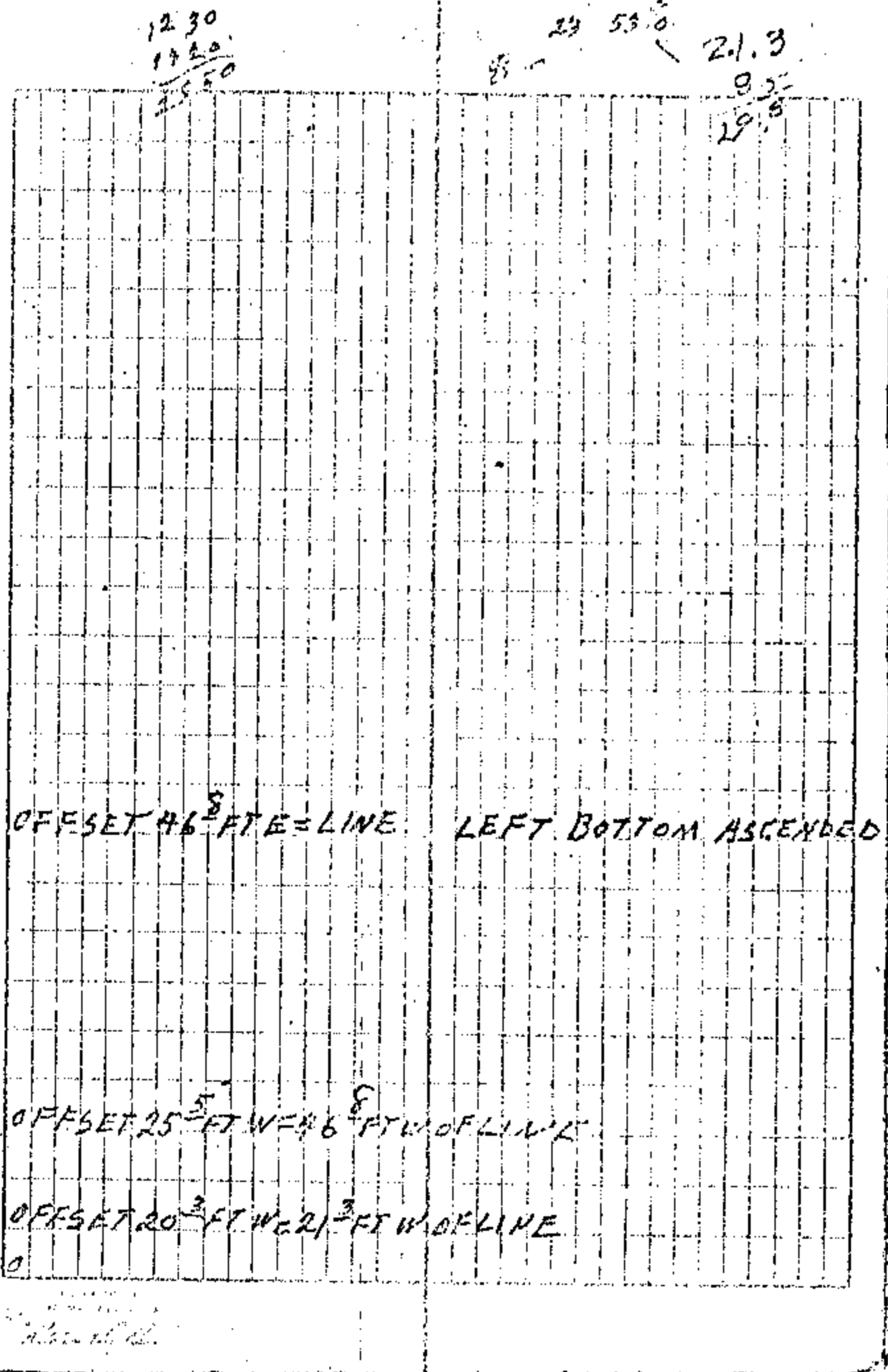
OFFSET 2 FT E-3 FT E OF LINE

TOP OF SPUR

OFFSET 1 FT E OF LINE

NORTH FROM 1/4 COR SECTION 11/12
T. 23 S. R. 12 W.

| STATION | SLOPE | HORIZ. | BEAR | INTSTA | ADJ. V. |
|--------------------|-------|------------------|------|--------|---------|
| 25+50 ⁰ | 73° | 46 ⁶ | | | +58 V |
| 24+86 ⁴ | 168° | 167 ⁵ | | | -8 V |
| 23+18 ² | 152° | 149 ² | | | +20 V |
| 21+69 ⁸ | 63° | 52 ⁶ | | | +68 V |
| 21+17 ² | 127° | 93 ⁶ | | | +87 V |
| 20+23 ⁶ | 210° | 186 ³ | | | +52 V |
| 18+37 ³ | 219° | 198 ⁷ | | | +46 V |
| 16+38 ⁴ | 40° | 38 ⁶ | | | -29 V |
| 15+99 ⁶ | 132° | 116 ⁴ | | | +54 V |
| 14+83 ⁴ | 46° | 45 ⁵ | | | +74 V |
| 14+37 ⁹ | 185° | 167 ⁹ | | | +47 V |
| 12+70 ⁰ | 40° | 40° | | | LEV |
| 12+30 ⁰ | | | | | |



③

NORTH FROM SECOR BETWEEN 11/12
T235 R12 W

| | | |
|--------------------|---------------------|-----------------|
| 26+89 ⁴ | FOUND 4 IN IRON BAR | |
| 26+75 ² | 61 ⁰ | 59 ⁴ |
| 26+30 ³ | | |
| 25+50 ⁰ | 85 ⁰ | 80 ³ |

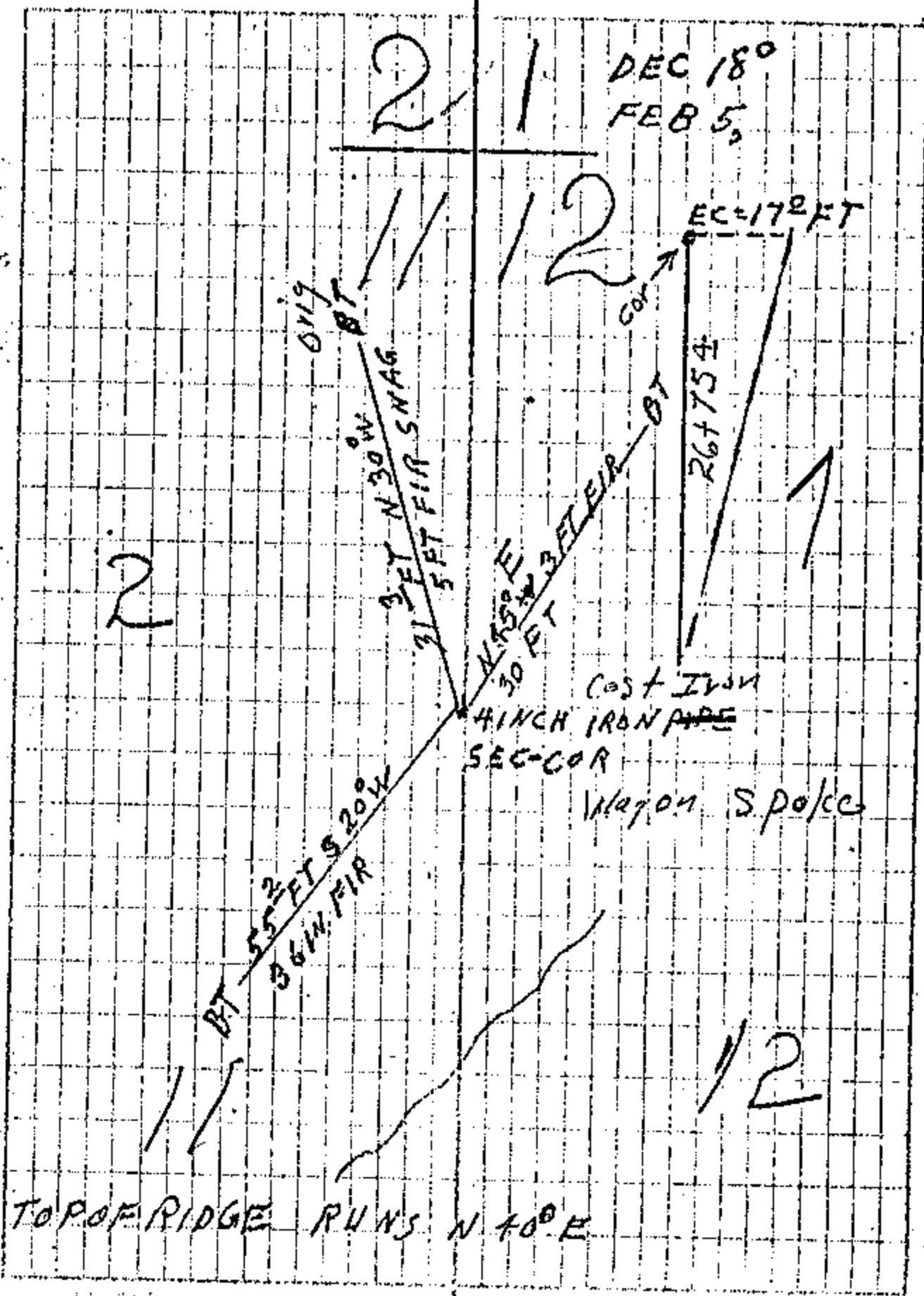
-26

+36¹

NORTH FROM 1/4 COR. BETWEEN 11/12
T235 R12 W

2/1

DEC 18⁰
FEB 5⁰



| STA | SLOPE | HORIZ. | BEAR. | INT. STA. | ADJX. |
|--------------------|------------------|------------------|-------|-----------|-------|
| 33+43 ⁰ | 274 ⁰ | | | | LEV |
| 30+49 ⁰ | 300 ⁰ | 300 ⁰ | | | LEV |
| 27+49 ⁰ | 300 ⁰ | 300 ⁰ | | | LEV |
| 24+49 ⁰ | 300 ⁰ | 300 ⁰ | | | LEV |
| 21+49 ⁰ | 300 ⁰ | 300 ⁰ | | | LEV |
| 18+49 ⁰ | 300 ⁰ | 300 ⁰ | | | LEV |
| 15+49 ⁰ | 300 ⁰ | 300 ⁰ | | | LEV |
| 12+49 ⁰ | 300 ⁰ | 300 ⁰ | | | LEV |
| 9+49 ⁰ | 300 ⁰ | 300 ⁰ | | | LEV |
| 6+49 ⁰ | 49 ⁰ | 49 ⁰ | | | LEV |
| 6+00 ⁰ | 300 ⁰ | 300 ⁰ | | | LEV |
| 3+00 ⁰ | 300 ⁰ | 300 ⁰ | | | LEV |
| 0+00 ⁰ | | | | | |

E BETWEEN SEC 12 T 23S R 12W
 (4) SEC COR TO SEC COR
 RUN FROM STAIRS

OFFSET 127⁰ N = 1091⁰ FT N - Drc: 17° 30'
 Tan = 01532 - 00° 53'
 True Drc = 180° 00'
 16° 17'

OFFSET 171⁰ FT N = 864⁰ N - True bearing =
 S 86° 47' E

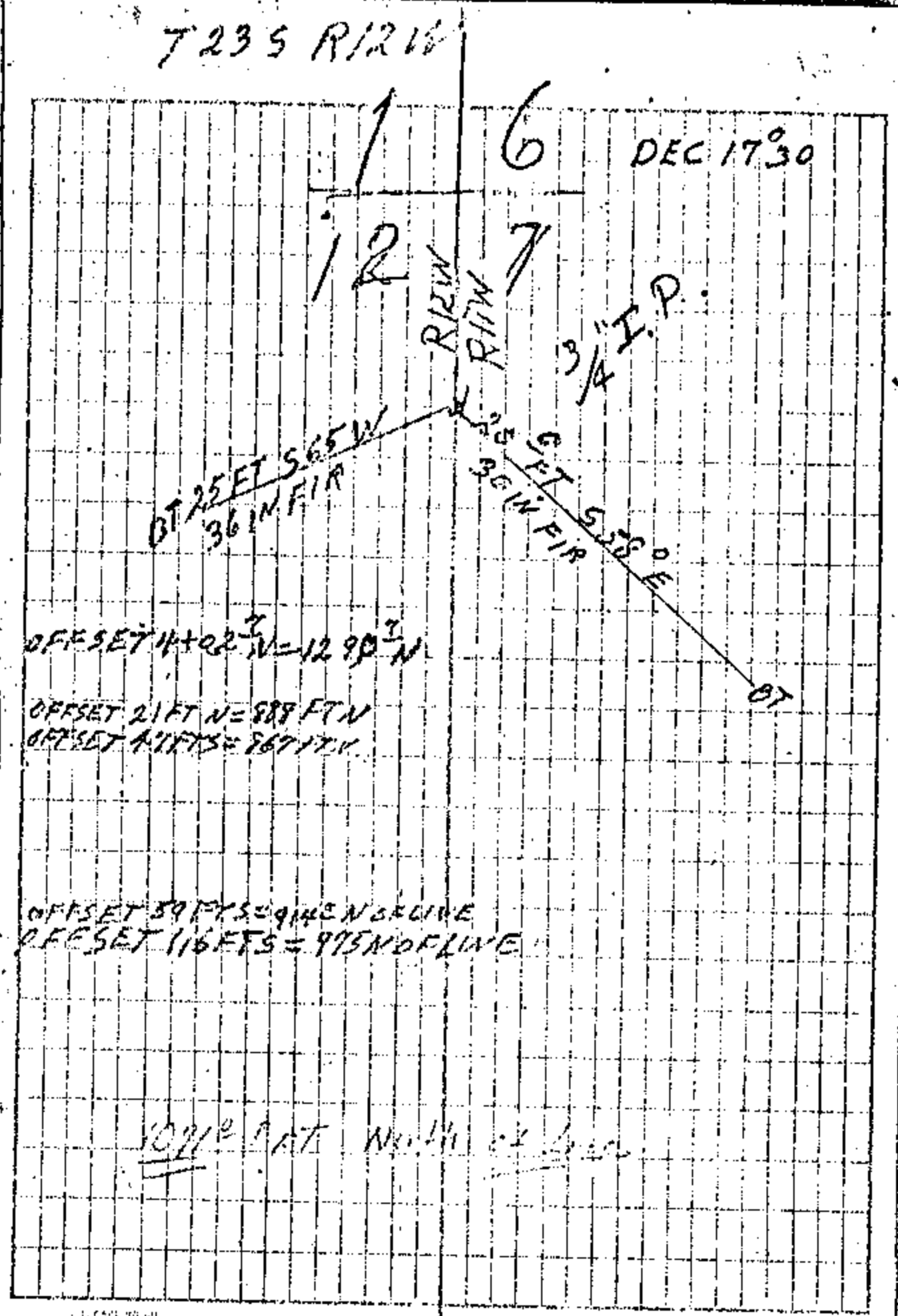
OFFSET 93 FT N = 773 FT N OFFLINE

OFFSET 24 FT S = 653 FT N OFFLINE
 OFFSET 190⁰ FT N = 709⁰ FT N OFFLINE

OFFSET 218⁰ FT N = 577⁰ N

OFFSET 299⁰ FT N

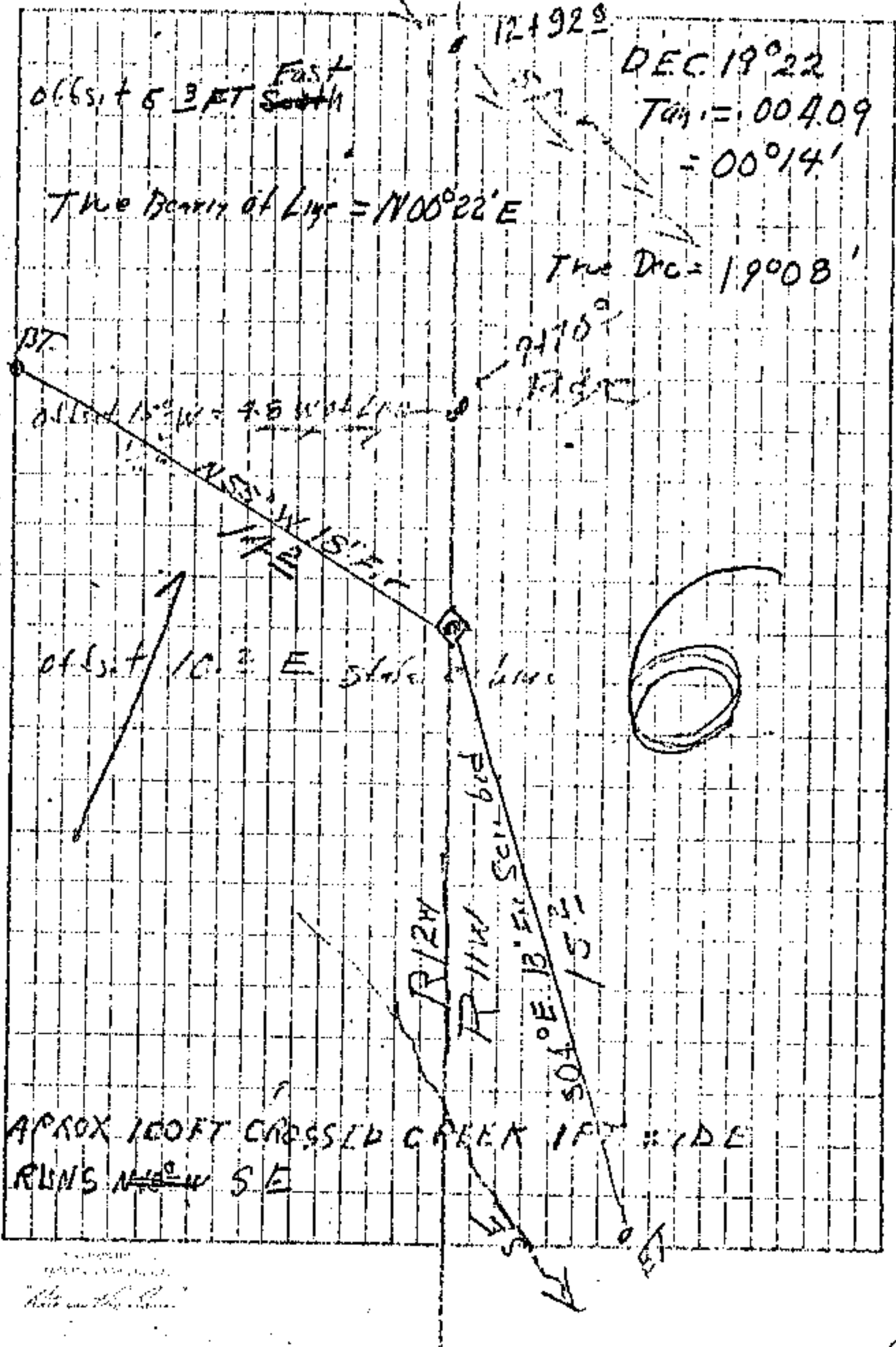
| STA | SLOPE | HORIZ | BEAR | INTSTA | ABNY |
|--------------------|------------------|------------------|--------------------|---------------|------|
| | | 153' | | TON = 101532 | |
| | | 5198' | | = 00° 53' | |
| | | 5199' | | <u>Wholly</u> | |
| | | 01° 13' | | | |
| 52+80 ^o | | | | | |
| 51+90 ^o | 81 ^o | 81 ^o | | LEV | |
| 51+74 ^o | 385 ^o | FOUND CON | 51+96 ^o | LEV | |
| 48+97 ^o | | | | LEV | |
| 46+13 ^o | 286 ^o | 286 ^o | | LEV | |
| 45+13 ^o | 300 ^o | 300 ^o | | LEV | |
| 42+43 ^o | 70 ^o | 70 ^o | | LEV | |
| 39+43 ^o | 300 ^o | 300 ^o | | LEV | |
| 36+43 ^o | 300 ^o | 300 ^o | | LEV | |
| 33+43 ^o | 300 ^o | 300 ^o | | LEV | |



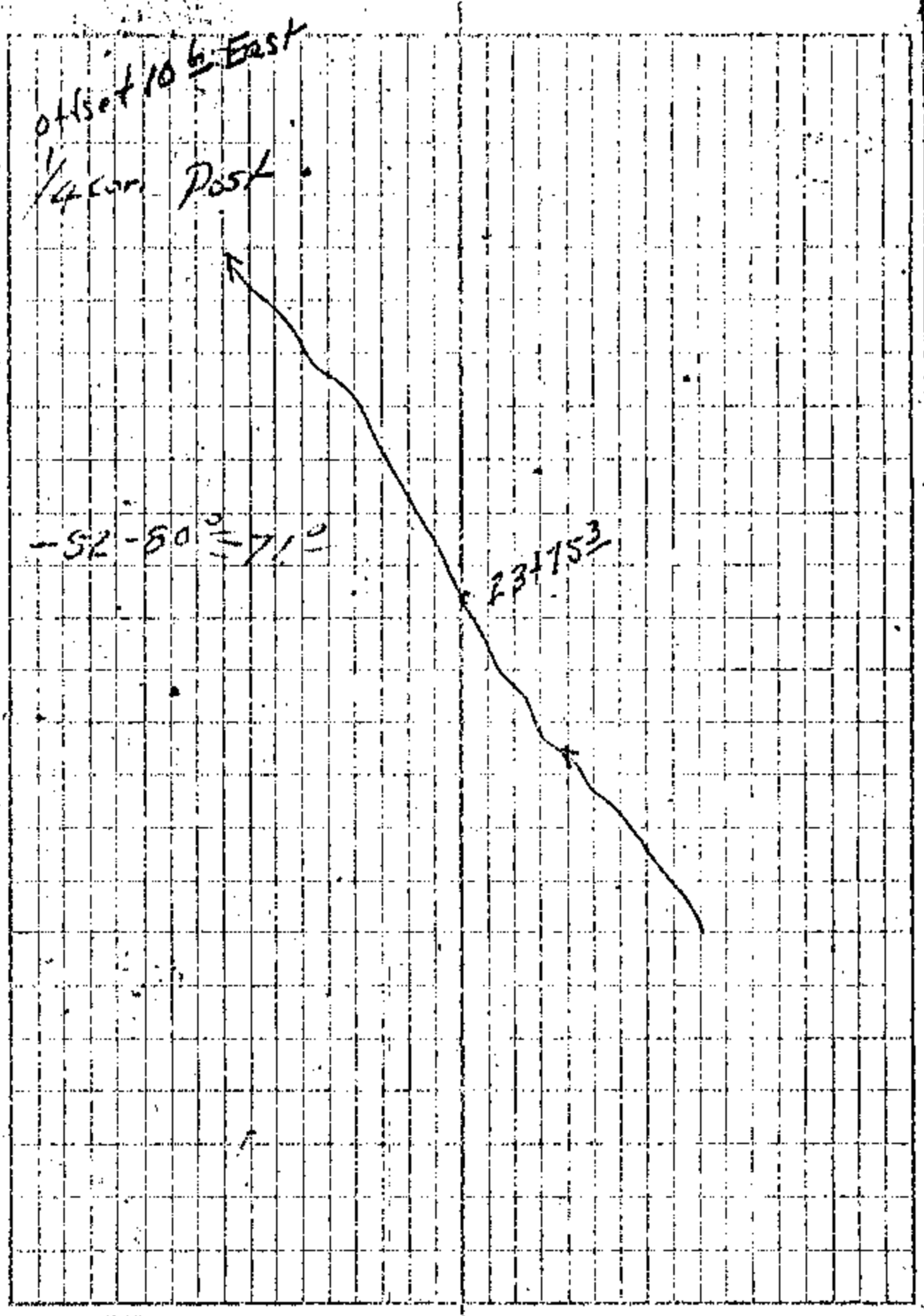
N FROM SEC COR BETWEEN 1/6 ON R LINE

| STA | SLOPE | HORIZ | DEAR | INT STA | ACRUP |
|---------|-------|-------|------|-----------|-------|
| 12+92.2 | | | | 12+91.2 | +15 |
| 12+93.0 | 112° | 110.8 | ✓ | S of S/16 | -20 |
| | 69° | 67.2 | ✓ | | |
| 11+14.5 | | | ✓ | | |
| | 135° | 106.5 | ✓ | | -80 |
| 15+08.0 | | | ✓ | | |
| | 40° | 38.0 | ✓ | | -33 |
| 9+70.0 | | | ✓ | | |
| | 56° | 41.6 | ✓ | | +90 |
| | 70° | 63.1 | ✓ | | +52 |
| 8+66.3 | | | ✓ | | |
| | 46° | 35.5 | ✓ | | +91 |
| 8+31.3 | | | ✓ | | |
| | 97° | 89.3 | ✓ | | +48 |
| 7+44.5 | | | ✓ | | |
| | 186° | 151.5 | ✓ | | +90 |
| 5+92.2 | | | ✓ | | |
| | 182° | 164.3 | ✓ | | +48 |
| 4+28.6 | | | ✓ | | |
| | 195° | 171.5 | ✓ | | +55 |
| 2+57.1 | | | ✓ | | |
| | 191° | 190.1 | ✓ | | +10 |
| 0+67.0 | | | ✓ | | |
| | 67° | 67.0 | ✓ | | LEV |
| 0+00.0 | | | ✓ | | |
| 12+7 | | 12+7 | ✓ | | |

S 1/6 COR. 1/6 T235 R12W

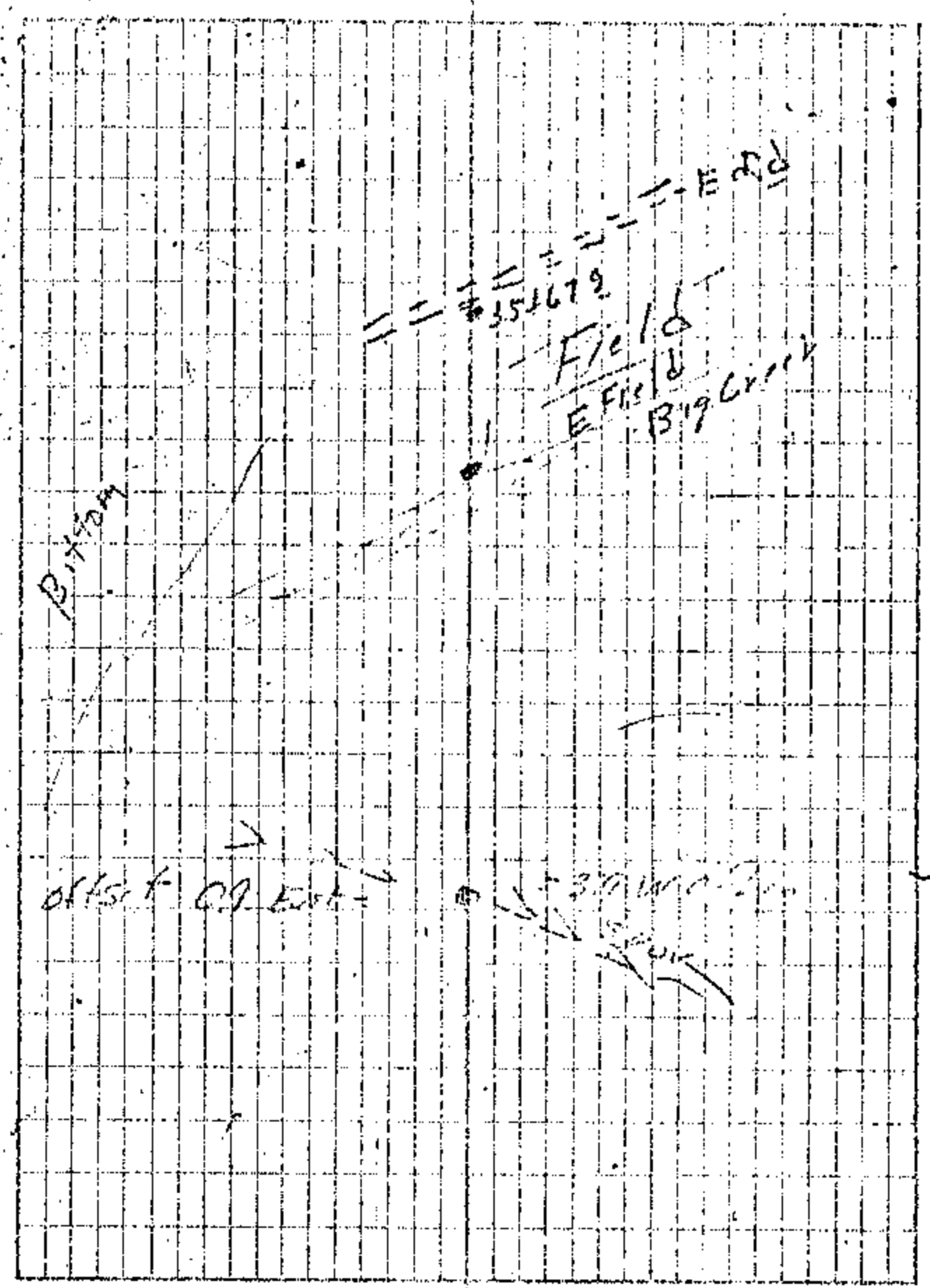


| Sta | Slope Dist | Asst Dist | Dist | Index Sta | Abn |
|--------------------|---------------|--------------|------|--------------|-----|
| 26+07.9 | | | | 25.833 | |
| 26+17.9 | | | | Set 1/4 Cor | +21 |
| 25+14.8 | 33.9 | 32.2 | ✓ | | |
| | 82.0 | 82.0 | ✓ | | 100 |
| 24+92.5 | | | ✓ | | -10 |
| | 77.0 | 75.6 | | | |
| 24+14.2 | | | / | | |
| | 117.0 | 107.0 | | | -36 |
| 23+04.3 | | | / | 23+75.3 | |
| | 155.0 | 140.8 | | Station | -47 |
| 21+63.5 | | | / | | |
| | 139.0 | 119.6 | | | -59 |
| 20+43.5 | | | ✓ | | |
| | 180.0 | 168.0 | | | -37 |
| 18+75.1 | | | / | | |
| | 150.0 | 140.7 | | | +37 |
| 17+34.4 | | | / | | |
| | 126.0 | 126.0 | ✓ | | 100 |
| | 284.0 | 262.0 | | | -42 |
| 15+46.2 | | | ✓ | | |
| | 57.0 | 53.3 | | | -37 |
| 12+72.9 | | | | | |
| 11+93.8 | | | | | |
| 13+14.7 | | | | | |
| 26+07.9 | | | | | |
| | | 13+14.2 | ✓ | | |



⑧

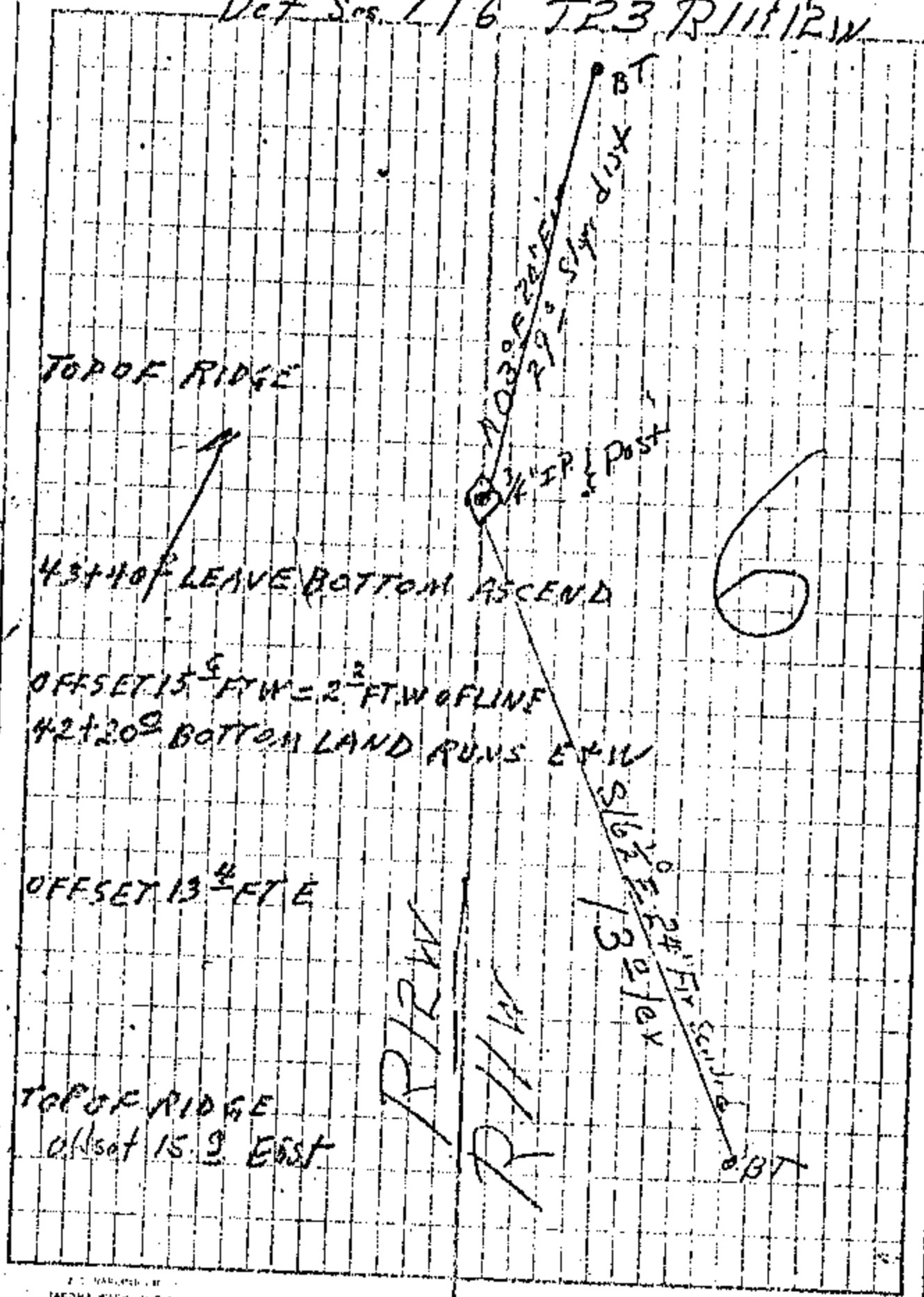
| Sta | Slope Dist | Horizontal Dist | Dist | Infer Sta | Abney |
|--------------------|------------|--------------------|------|-----------|-------|
| 27750 ² | | | | | |
| | 88° | 70 ³ | ✓ | | +74 |
| 37410 ⁶ | | | | | |
| | 153° | 141 ⁸ | ✓ | | +41 |
| 35463 ⁸ | | | | | |
| | 106° | 106° | ✓ | | 104 |
| | 300° | 300° | ✓ | | 102 |
| 31742 ³ | | | | 31742 | Stn |
| | 52° | 52° | ✓ | | 101 |
| 33479 ⁹ | | | | | |
| | 131° | 101 ³ | ✓ | | -52 |
| 27475 ⁹ | | | ✓ | | |
| | 35° | 33° | | | -55 |
| 29195 ⁶ | | | | | |
| | 58° | 50° | ✓ | | +56 |
| 28195 ⁹ | | | | | |
| | 35° | 35° | ✓ | | 104 |
| 28160 ² | | | | | |
| | 119° | 101 ³ | ✓ | | +60 |
| | 54° | 52° | ✓ | | +27 |
| 27405 ⁸ | | | | | |
| | 102° | 75° | ✓ | | +26 |
| 26407 ⁹ | | | | | |
| 26407 ⁹ | | | | | |
| | | 1,173 ² | | | |



⑨

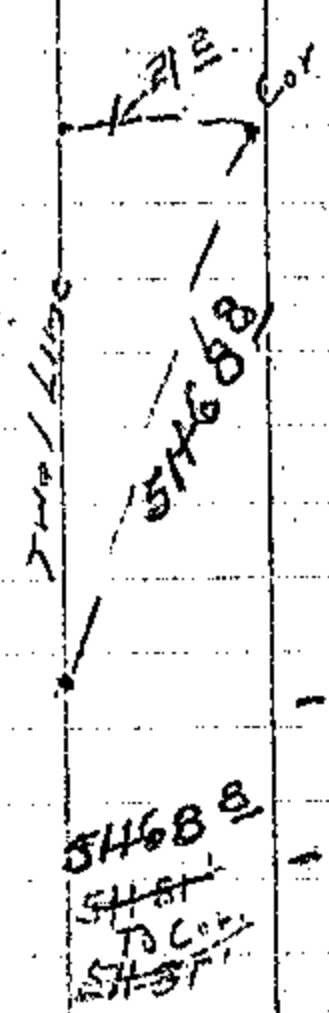
| Sta. | Slope Dist | Horiz Dist | Bearing | Inter Sta | Atm. Cor. |
|----------|------------|------------|---------|-----------|-----------|
| 45+98.6 | | | | | |
| -45+10.5 | | | | | |
| 45+36.6 | 79° | 43.3 | ✓ | | 36° |
| 45+36.2 | | | | | |
| 44+81.4 | 56° | 55.2 | ✓ | | +16 |
| 44+49° | | | | | |
| 44+49° | 35° | 32.4 | ✓ | | +41 |
| 43+79° | | | | | |
| 43+79° | 91° | 72° | ✓ | | +78 |
| 42+45° | | | | | |
| 42+45° | 135° | 132° | ✓ | | +22 |
| 41+53.2 | | | | | |
| 41+53.2 | 102° | 91.8 | ✓ | | -49 |
| 40+15.2 | | | | | |
| 40+15.2 | 162° | 138° | ✓ | | -62 |
| 39+50.2 | | | | | |
| 39+50.2 | 67° | 52.2 | ✓ | | -78 |
| 39+23.7 | | | | | |
| 39+23.7 | 27° | 27° | ✓ | | LEV. |
| 38+63.4 | | | | | |
| 38+63.4 | 67° | 60.6 | ✓ | 38+75.5 | 776 |
| | | | | N 1/6 CV | |
| 37+80.9 | | | | | |
| 37+80.9 | 98° | 82.2 | ✓ | | +64 |
| 34+17.7 | | | | | |
| 34+17.7 | | 817.70 | | | |

N 1/6 cor. of Range Lm C 120/R11W
 Det Sec. 1/6 T23 R11E 12W

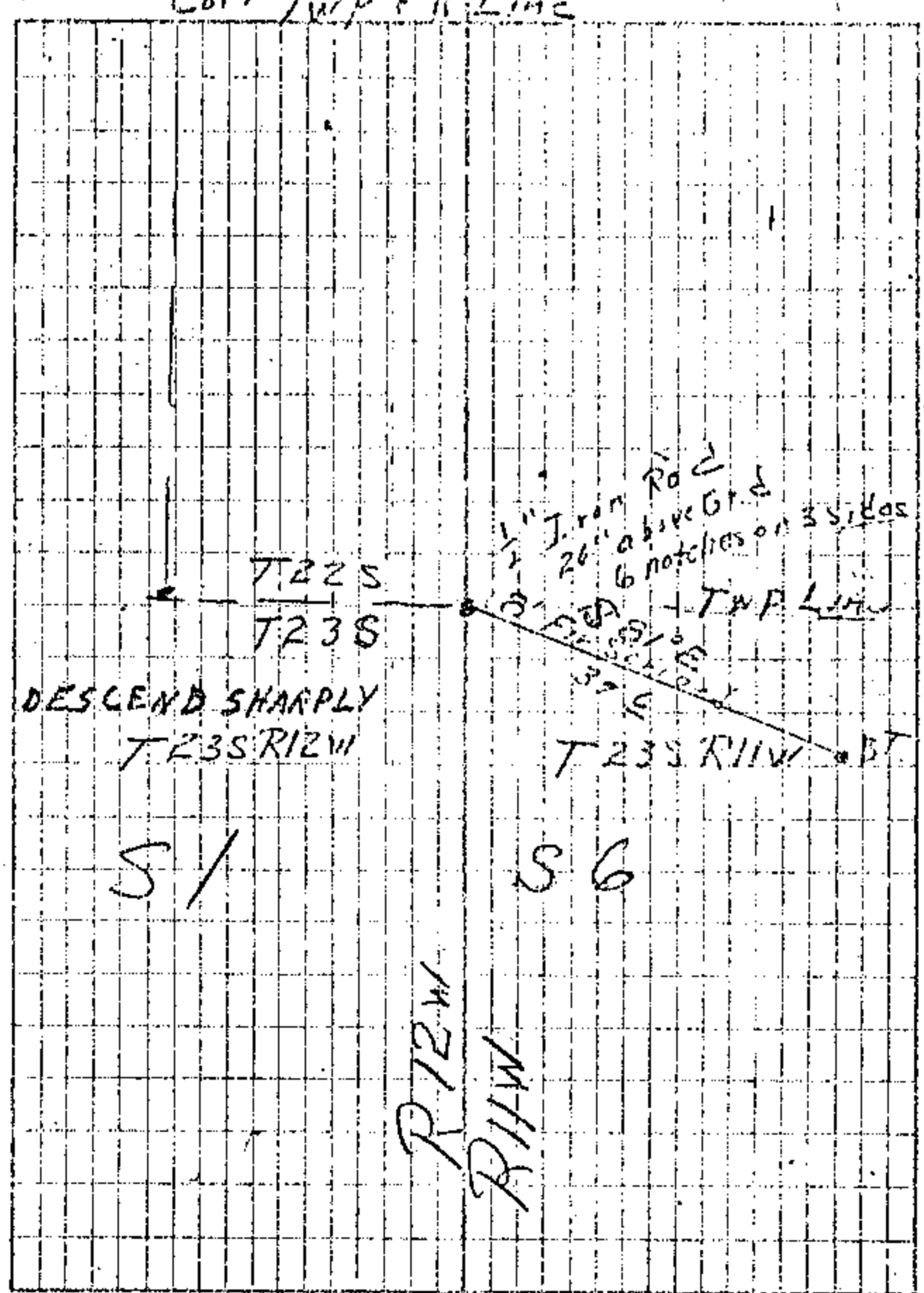


(10)
STA SLOPE HORIZ BEAR INTSTA HORIZ

| STA | SLOPE | HORIZ | BEAR | INTSTA | HORIZ |
|--------------------|-------|------------------|------|--------|-------|
| 53+92 ¹ | | | | | |
| 53+41.9 | 62° | 53 ² | | | -74 |
| 53+41.5 | | 50 ² | | | |
| 52+82 ³ | 69° | 59 ² | | | -58 |
| 52+57.9 | | | | | |
| 50+60.3 | 211° | 209 ² | | | +11 |
| 50+72.1 | | | | | |
| 49+87.2 | 75° | 73 ² | | | +24 |
| 49+79.7 | | | | | |
| 48+44.2 | 173° | 143° | | | +72 |
| 48+55.2 | | | | | |
| 47+40.8 | 112° | 103 ² | | | -42 |
| 47+52.7 | | | | | |
| 46+85.9 | 55° | 55° | | | LEV |
| 46+97.1 | | | | | |
| 45+98.6 | 92° | 87 ² | | | +34 |
| 46+10.2 | | 671 ² | | | |



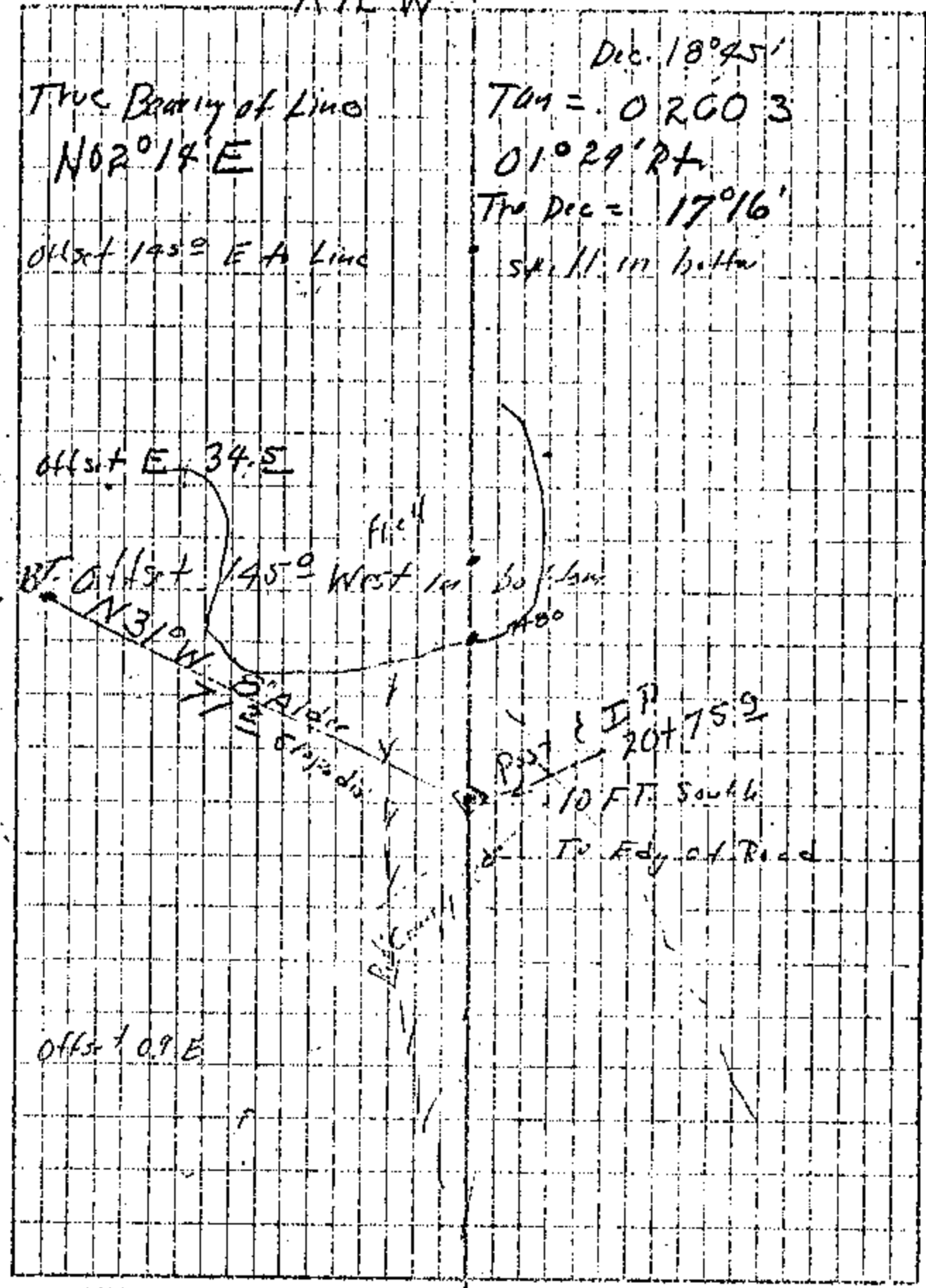
27 E
CORR TWP & R LINE



North bet. 2/1 T235 R12W

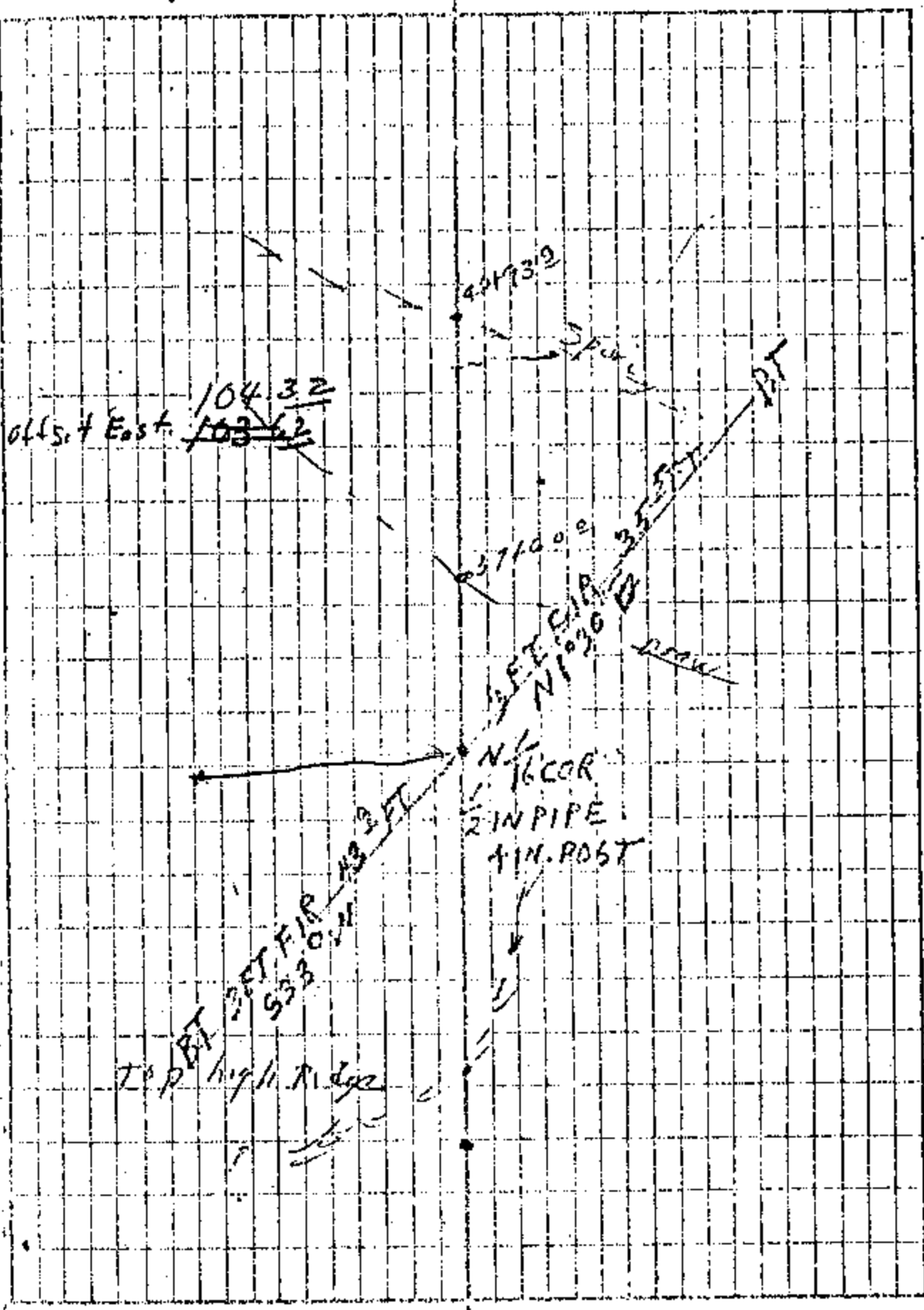
| Sta | Slope Dist | Horiz Dist | Bar | Infor Sta | Abney |
|--------------------|------------------|--------------------|-----|-------------------|-------|
| 20475 ² | 26 ² | 26 ² | — | | 104 |
| | 300 ² | 297 ² | 0.5 | | +12 |
| 17451 ² | 93 ² | 93 ² | | | 10 |
| 16458 ² | | | | | |
| | 240 ² | 240 ² | | | |
| | 300 ² | 300 ² | | 3426 ² | 2/1 |
| | 300 ² | 300 ² | | S 1/6 cor | 101 |
| 8418 ² | | | | | |
| | 115 ² | 112.6 | | | -21 |
| 7406 ² | | | | | |
| | 87 ² | 85.7 | | | -17 |
| | 106 ² | 92.8 | | | -54 |
| 5427 ² | | | | | |
| | 148 ² | 130.5 | | | -53 |
| 3497 ² | | | | | |
| | 283 ² | 246.3 | | | -57 |
| 1450 ² | | | | | |
| | 106 ² | 92.8 | | | -54 |
| 0458 | | | | | |
| | 63 ² | 58.1 | | | -43 |
| 0400 | | 4' | | | |
| 2/1 | | | | | |
| 11/12 | | | | | |
| | | 20475 ² | | | |

W.C. Cor. bet 2/1 T235 R12W



N 1/16 COR BETWEEN S 1/2

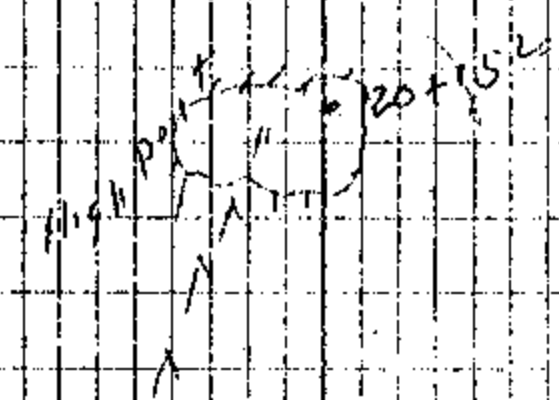
| Sta | Slope DIST | 1/16 DIST | Per | Indiv Sta | Abng |
|--------------------|------------|-----------|-----|------------------------------|------|
| 93+60 ² | 6° | 6° | ✓ | | 10 |
| 43+54 ² | 285° | 260° | ✓ | | -45 |
| 70+93 ² | 31° | 31° | ✓ | 40+07 ² | 10 |
| | 131° | 129° | ✓ | 37+81² | +17 |
| 37+33 ² | 176° | 153° | ✓ | | -56 |
| 37+80 ⁶ | 42° | 36° | ✓ | 37+60 ² | -59 |
| 37+44 ¹ | 96° | 95° | ✓ | | +9 |
| | 137° | 135° | ✓ | | -17 |
| 35+13 ⁵ | 306° | 300° | ✓ | | 10 |
| 32+13 ⁵ | 52° | 52° | ✓ | | |
| 31+61 ⁵ | 58° | 56° | ✓ | | +23 |
| 31+05 ² | 67° | 54° | ✓ | | +68 |
| 30+50 ¹ | | | | | |



16

| Sta. | Step Dist | Ha Dist | Ben | Top Sta | Dist |
|---------|-----------|---------|-----|---------|------|
| 24+62.2 | 95° | 73.1 | | | -21 |
| | 29° | 29.0 | | | 100 |
| | 190° | 165.8 | | | -56 |
| | 60° | 54.2 | | | -47 |
| 21+21.3 | 60° | 59.3 | | | -15 |
| | 40° | 46.0 | | | +21 |
| 20+55.2 | 176° | 148.3 | | | +63 |
| 18+66.2 | 46° | 38.5 | | | +62 |
| | 77° | 77.2 | | | +15 |
| | 98° | 97.5 | | | -10 |
| 16+53.2 | 170° | 168.1 | | | +15 |
| | 151° | 123.3 | | | -71 |
| | 86° | 70.5 | | | +44 |
| 12+83.4 | 25° | 26.0 | | | - |
| 12+58.2 | 111° | 93.2 | | | +65 |
| 11+65.2 | | | | | |
| 14+95.0 | | 12+99.0 | | | |

Offset 11.2 N. to Line



Offset 1.2 South Stationer Line

12+93.5
5th State Bar +44
approx 1/16 cur

12+98.5

offset S - 47.8 FT South
Top spur

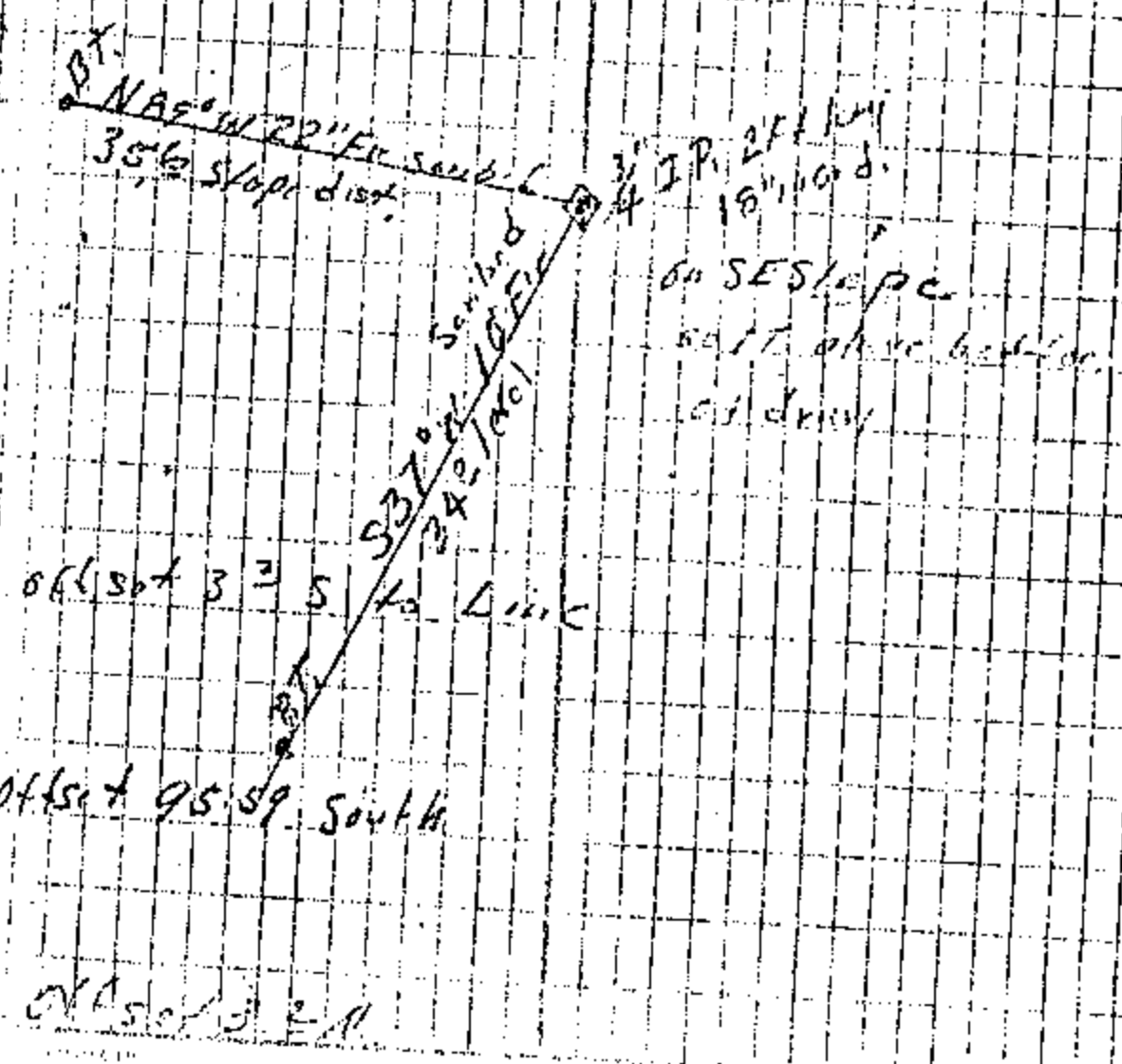
(17)

Continued on page (21)

| | | | |
|--|------------------|------------------|--|
| 35+45 ² 35+44⁹ | 134 ⁰ | 134 ⁰ | |
| 34+10 ² | 116 ⁰ | 116 ⁰ | |
| 32+94 ² | 115 ⁰ | 125 ⁰ | |
| | 42 ⁰ | 41 ⁰ | |
| 31+38 ² | 69 ⁰ | 68 ¹ | |
| | 67 ⁰ | 58 ⁵ | |
| 30+12 ³ | 178 ⁰ | 174 ⁵ | |
| 28+37 ⁸ | 44 ⁰ | 44 ⁰ | |
| 27+93 ⁸ | 118 ⁰ | 95 ⁹ | |
| 26+97 ⁹ | 56 ⁰ | 52 ³ | |
| 26+45 ⁶ | 185 ⁰ | 152 ⁴ | |
| 24+92 ² | 35 ⁰ | 30 ⁰ | |
| 24+62 ² | | 5 ¹ | |
| 10+81 ⁷ | | | |
| 5+45 ⁹ | | | |

25+99⁰
1/4 cor

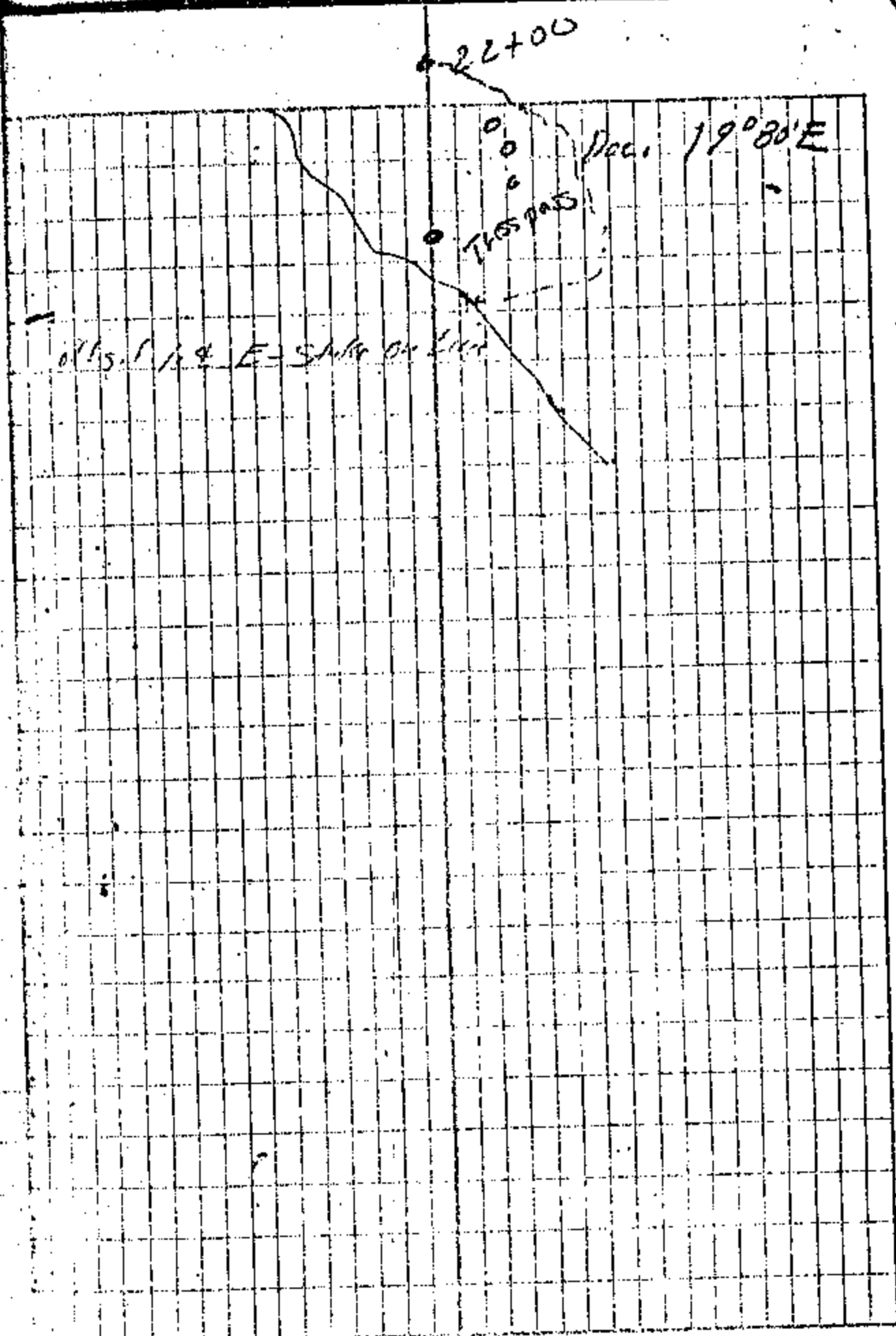
4 Co pit 1/2 TL3SR12VI
March - 6, 1952



(18)

North from $\frac{1}{4}$ Cor. S 18. 049
 TRAS. R 11 W -

| Sta | Slope Dist | Height Dist | Bear | Index Sta | Abny |
|-----------------|---------------|----------------|------|--------------|------|
| 19 25+11 Z | 2820 | 2820 | | | 1m |
| 16 14+29 Z | 1570 | 1570 | | | |
| 14 15+72 Z | 2830 | 2830 | | | 1m |
| 11 17+89 Z | 740 | 740 | | | k |
| 9 9+24 Z | 2910 | 2910 | | | 1m |
| 7 8+53 Z | 450 | 440 | | | -17 |
| 6 7+55 Z | 1250 | 1250 | | | 1m |
| 3 4+57 Z | 2960 | 2960 | | | -5 |
| 1 2+67 Z | 1920 | 1920 | | | 7 |
| 0+67 Z | 1010 | 1000 | | | +13 |
| 0+00 1/4 Cor | 730 | 670 | | | +44 |
| | | 11+11 Z | | | |

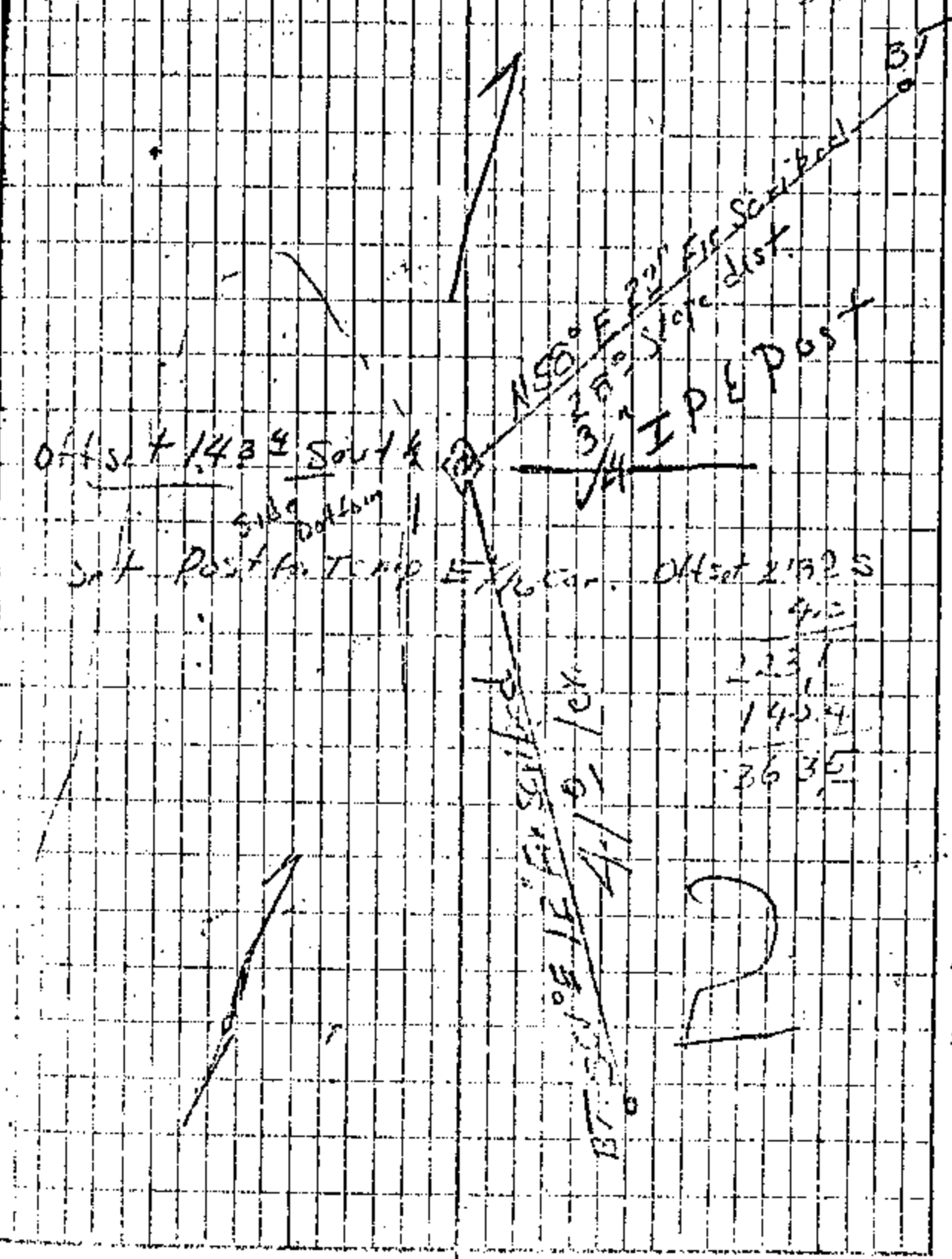


(21) East lot $\frac{1}{2}$ T23S R12W
Continued

| Sta | Dist | H. or Cur | Dist | Dist Sta | Abng |
|---------|-----------|----------------|------|----------|-----------|
| 39+76.2 | = 39+72.2 | on object line | | 38+96.5 | E 1/6 cor |
| | 74° | 94° | | | 1.0 |
| 38+62.9 | | | | | |
| 105.9 | = | | | | |
| 38+73.5 | | | | | |
| | 105° | 96.5 | | | -44 |
| 37+96.0 | | | | | |
| | 36° | 35.6 | | | -14 |
| 37+60.4 | | | | | |
| | 71° | 57.2 | | | +66 |
| 37+01.0 | | | | | |
| | 133° | 109.0 | | | -71 |
| | 50° | 46.1 | | | -42 |
| 35+4.5 | | | | | |

E 1/6 cor. lot $\frac{1}{12}$
March 6, 1952 38+80.6

T23S R12W



Stephens 1152

21

EAST ON NORTH BDY LOT #1
SEC 35 T22S R12W

STA SLOPE HORIZ BEAR INT STA ADJ

TRIAL DEC = 17°00

13+21⁰ SET TEMP SE COR LOT #1
13+20 60° 94
58°

12+62⁴ +22

10+08⁵ 260° 253° +22

106° 106° LEV

254° 218⁴ -60

6+84¹ 57° 48⁴ -60

6+35³ 118° 118° LEV

137° 126¹ INT 742

3+91⁶ 56° 53⁸ -28

3+37⁸ 151° 151° LEV

1486⁸ 119° 119⁸ +18

0+69⁰ 69° 69° LEV

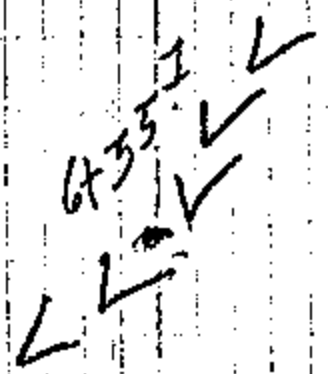
0+02 34/35

13+21³

INT COR 1 1 1

OFFS - 15° FT N

SPUR RUNS



S 35° E

NORTH ON EAST BDY. LOT NO 1
SEC-35-T22S-R12W

57-80%

12+285

260° 563
236° 2

INT -46

9+923

248° 212 4

-60

OFFS 43⁸FT WEST = 42⁸FT W OF LINE

7+79 2

46° 46°

LEV

TOP OF ~~PIPE~~ ^{7+59 9} COL RUNS EAW

7+33 2

73° 67 1/2

+44

4+57 1

212° 209 1/2

INT +15

OFFS -6° FT E = 1° FT E

3+73 1

96° 84°

+54

2+75 2

105° 97 1/2

+42

1+09 6

62° 57 1/2

+40

111° 108 1/2

INT +21

OFFS 0 1/2 FT E OF LINE

0+15 0

107° 94 1/2

+52

0+00 6

15° 15°

LEV

12+285

| EAST FROM TEMP SE COR LOT# 1 | | | |
|------------------------------|--------------------|------------------------------|------------|
| STA | SLOPE | HORIZ BEAR | INTSTADBY |
| SET TEMP NE COR LOT# 2 | | | |
| 13+20 ⁰ | 142 ³ | 142 ³ | LEV |
| 11+77 ⁷ | 249 ⁰ | 34' 249 ⁰ | LEV |
| 6+25 ⁷ | 300 ⁰ | 300 ⁰ | INTSTA LEV |
| 4+81 ³ | 147 ⁴ | 147 ⁴ | LEV |
| | 174 ² | TURN 45° 205 ⁴ FT | |
| 3+27 ¹ | | 154 ² | -53 |
| 1+98 ⁸ | 133 ⁰ | 128 ² | -28 |
| 0+99 ⁸ | 105 ⁰ | 99 ¹ | -36 |
| 0+60 ⁰ | 41 ⁰ | 39 ⁸ | -25 |
| 0+00 ⁰ | 60 ⁰ | 60 ⁰ | LEV |
| | 11+77 ⁷ | | |

TRIAL DEC 19⁰⁰

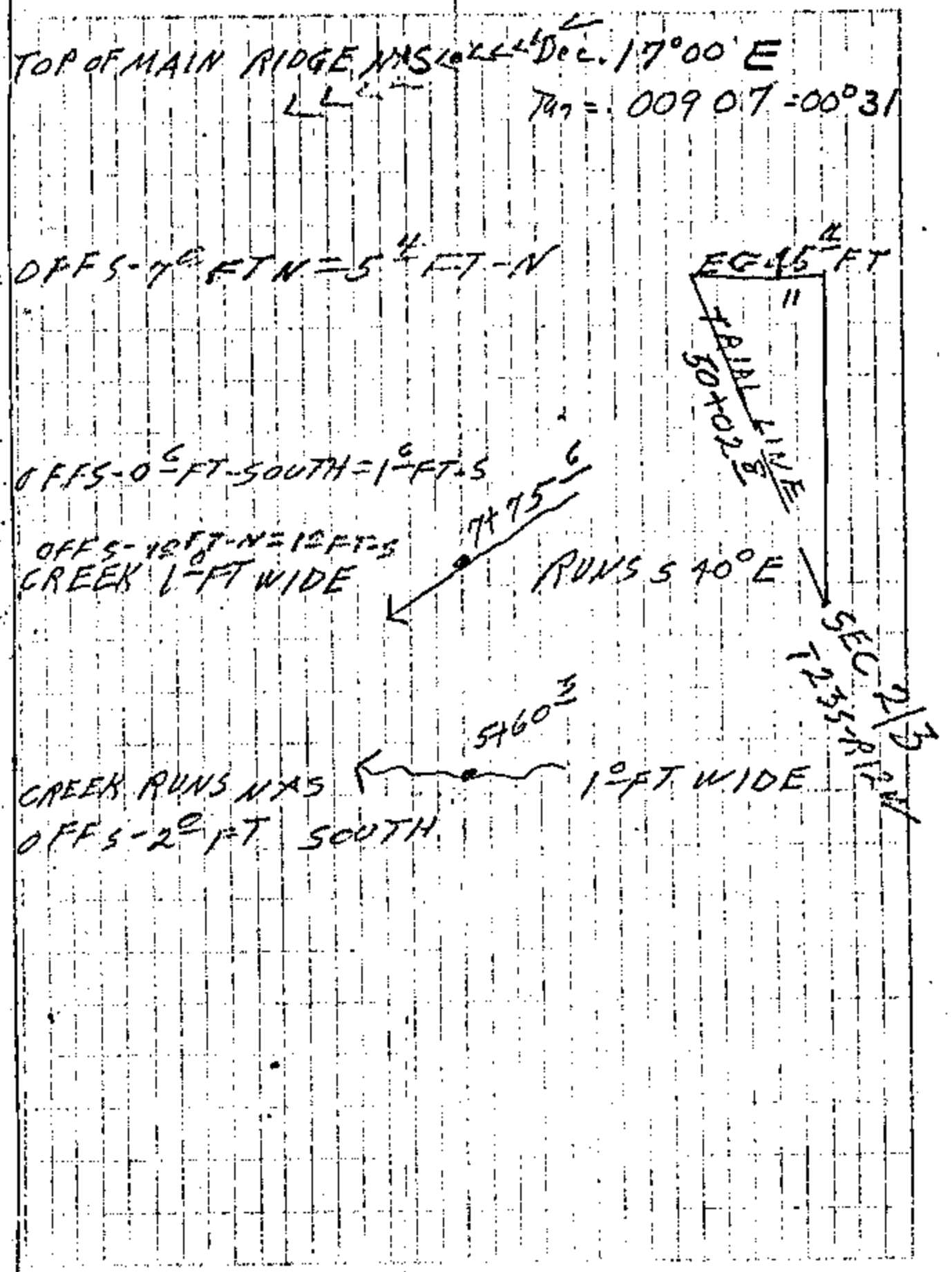
OFFS-147⁴ SOUTH = 148⁴ SOUTH

OFFS-2⁸ FT S = 1⁰ FT SOUTH

OFFS-1⁰ FT NORTH

| West from Sec Cor | R12W1- | 2/1 | T 2 3 S | R12W |
|--------------------|------------------|--------------------|---------|---|
| 12+85 ⁶ | | | | |
| 11+90 ⁷ | 104 | 45 | | 12+50 ¹ +46 with spongy 11.345 |
| 11+55 ⁵ | 40 ⁰ | 35 ² | | +54 |
| 11+08 ⁰ | 57 ⁰ | 47 ⁵ | | +64 |
| 9+12 ² | 219 ⁰ | 195 ⁸ | | +50 |
| 8+01 ⁶ | 137 ⁰ | 110 ⁶ | | +72 |
| 6+35 ⁶ | 166 ⁰ | 166 ⁰ | | LEV |
| 5+75 ³ | 75 ⁰ | 60 ³ | | +74 |
| 4+36 ⁴ | 167 ⁰ | 138 ⁹ | | +66 |
| 3+47 ² | 94 ⁰ | 89 ² | | +34 |
| 2+59 ⁹ | 89 ⁰ | 87 ³ | | +20 |
| 0+77 ⁸ | 212 ⁰ | 182 ¹ | | +60 |
| 0+00 ⁰ | 91 ⁰ | 77 ⁸ | | +61 |
| | SFC 1/2 | 12585 ⁶ | | |

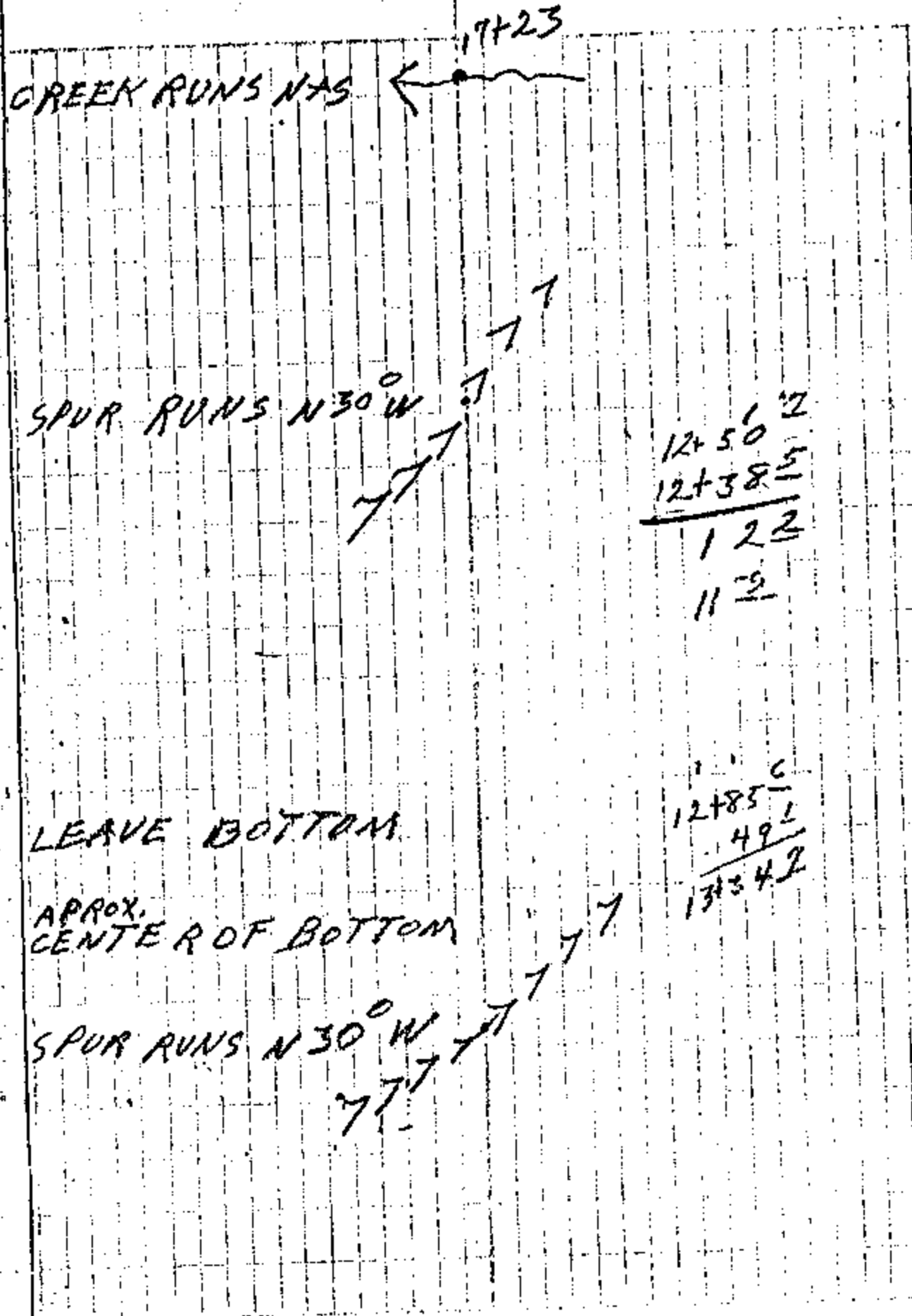
(4988' ORIG) 167 1/2 FT FROM REF-POINT -1700'



EAST FROM SEC-COR-2/3 7235-R12V

| STA | SLOPE | HOR | BEAR | INT STA | ALBY |
|--------------------|-------|--------------------------|------|--|------|
| 17+70 ^L | 264° | 545 ² 240° | | | -46 |
| 15+29 ⁹ | 43° | 43° | | 43° | LEV |
| 13+39 ⁷ | 170° | 147° | | INT | -57 |
| 12+86 ^L | 59° | 53 ^L | | | -48 |
| 12+38 ⁵ | 49° | 47 ^E | | 12+50? OFF 113 FT W 1/8 SEC 20 N 1/4 | +24 |
| 10+82 ⁹ | 178° | 155 ³ | | | +55 |
| 9+30 ⁹ | 173° | 151 ⁹ | | | +55 |
| 8+06 ⁰ | 152° | 124 ⁹ | | | +70 |
| 7+31 ⁰ | 75° | 75° | | | LEV |
| 4+90 ^E | 244° | 240 ² | | | -18 |
| 0+00 ⁰ | 258° | 250 ^E | | | +24 |
| 13+34 ⁹ | 240° | 240° | | | LEV |
| 12+85 ^E | 54° | 49 ^L | | | -48 |

TRIAL DEC = 1700" INT

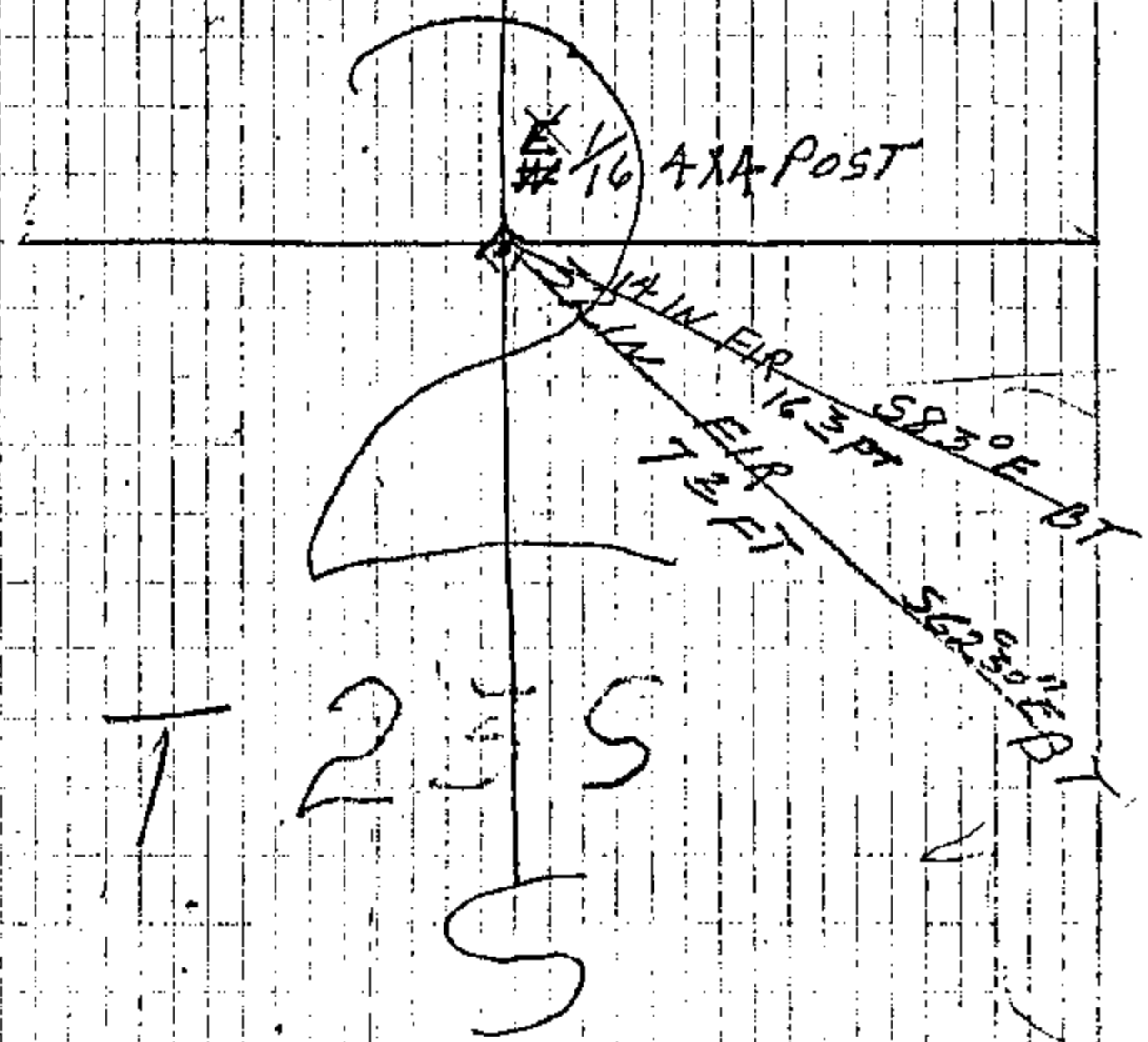


12+50²
12+38⁵
123
11²

12+85⁰
49^L
13+34⁹

W 1/16 SEC 2 ONLY T235-R12W

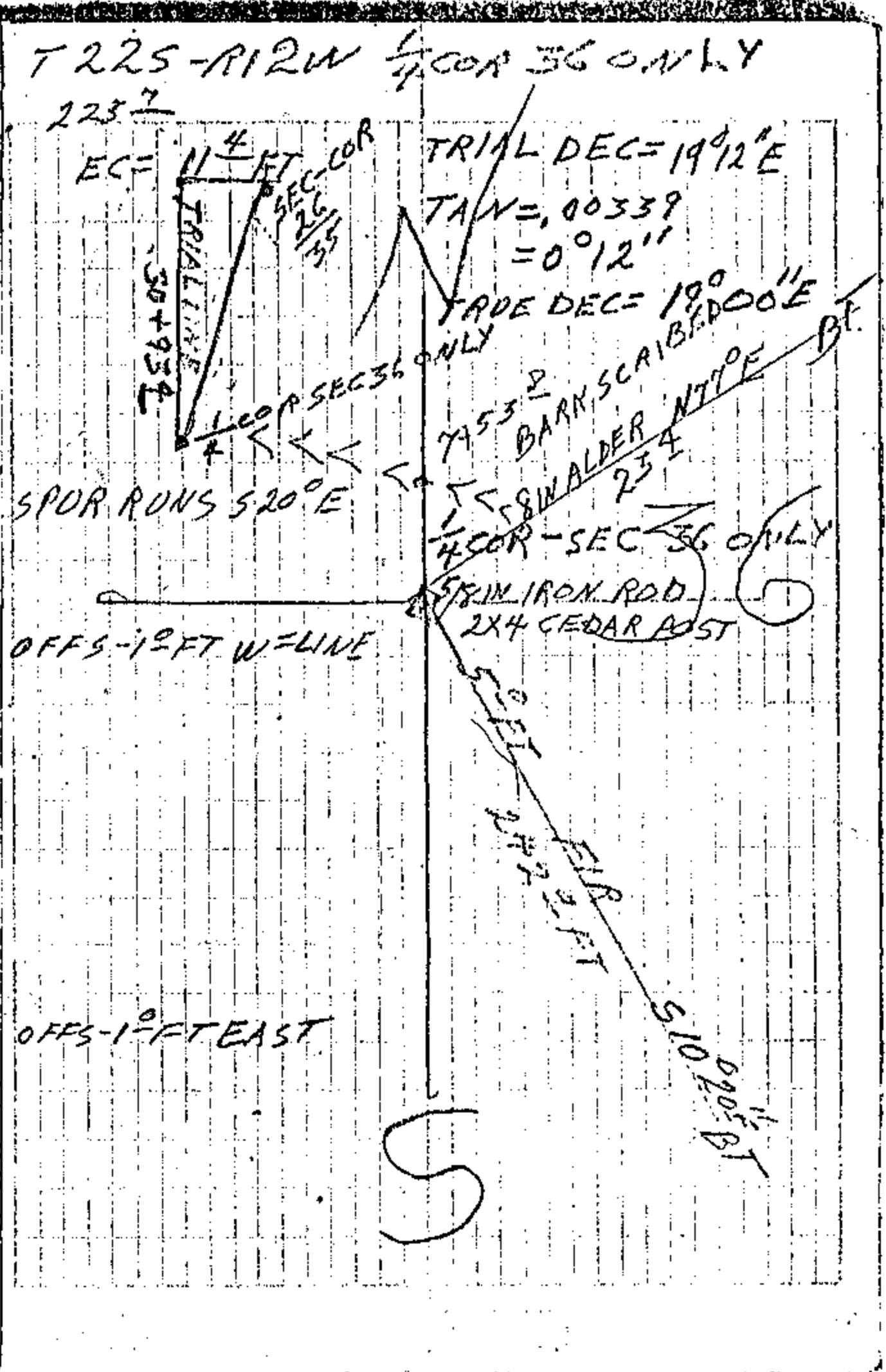
T 2R/S



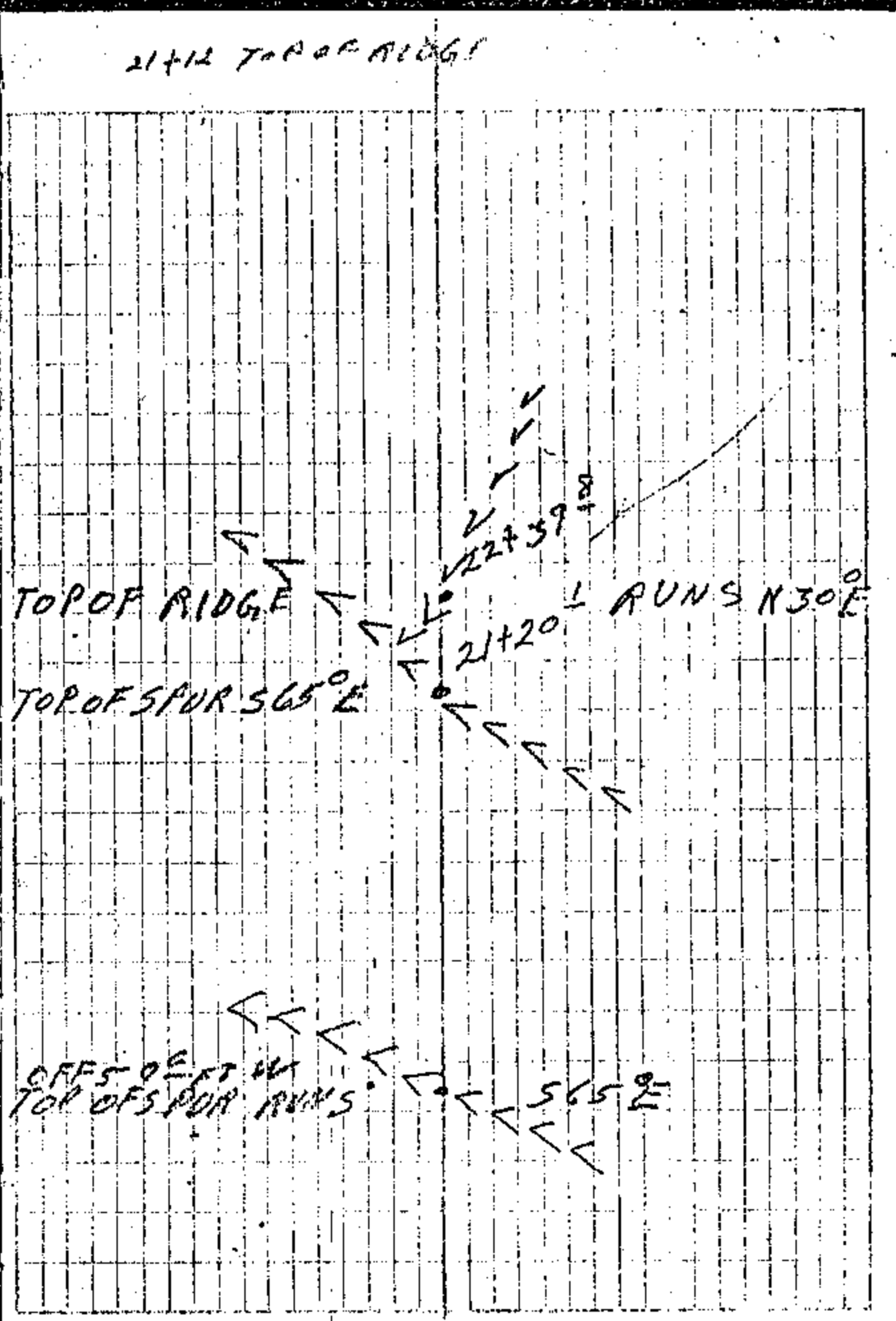
T 235

36+68 1/2
 36+66 1/2 + 13+34 1/2 EC=40 1/2 FT.
 42 1/2 33 1/2
 36+34 1/2
 +74

| STA | SLOPE | HORIZ BEAR | INT STA | ABNY |
|---------|-------|------------|---------|------|
| 1344.7 | 70 | 5.3 | | +74 |
| 10497.2 | 213 | 194.5 | INT | +45 |
| 8499.5 | 64° | 61° | | +33 |
| 8498.2 | 154.2 | 136.5 | INT | -53 |
| 7473.2 | 125.7 | 125.7 | | LEV |
| 6448.8 | 125.0 | 125.0 | | LEV |
| 5419.8 | 132.0 | 129.0 | | +22 |
| 3457.7 | 195.0 | 162.1 | | +68 |
| 2425.7 | 135.0 | 132.0 | SEC-35 | +25 |
| 1462.8 | 62.9 | 62.8 | | LEV |
| 1420.7 | 44.0 | 42.1 | | +32 |
| 0462.0 | 65.0 | 58.7 | | +50 |
| 0400.0 | 62.0 | 62.0 | | LEV |
| 0400.0 | 36 | 1347.2 | | |

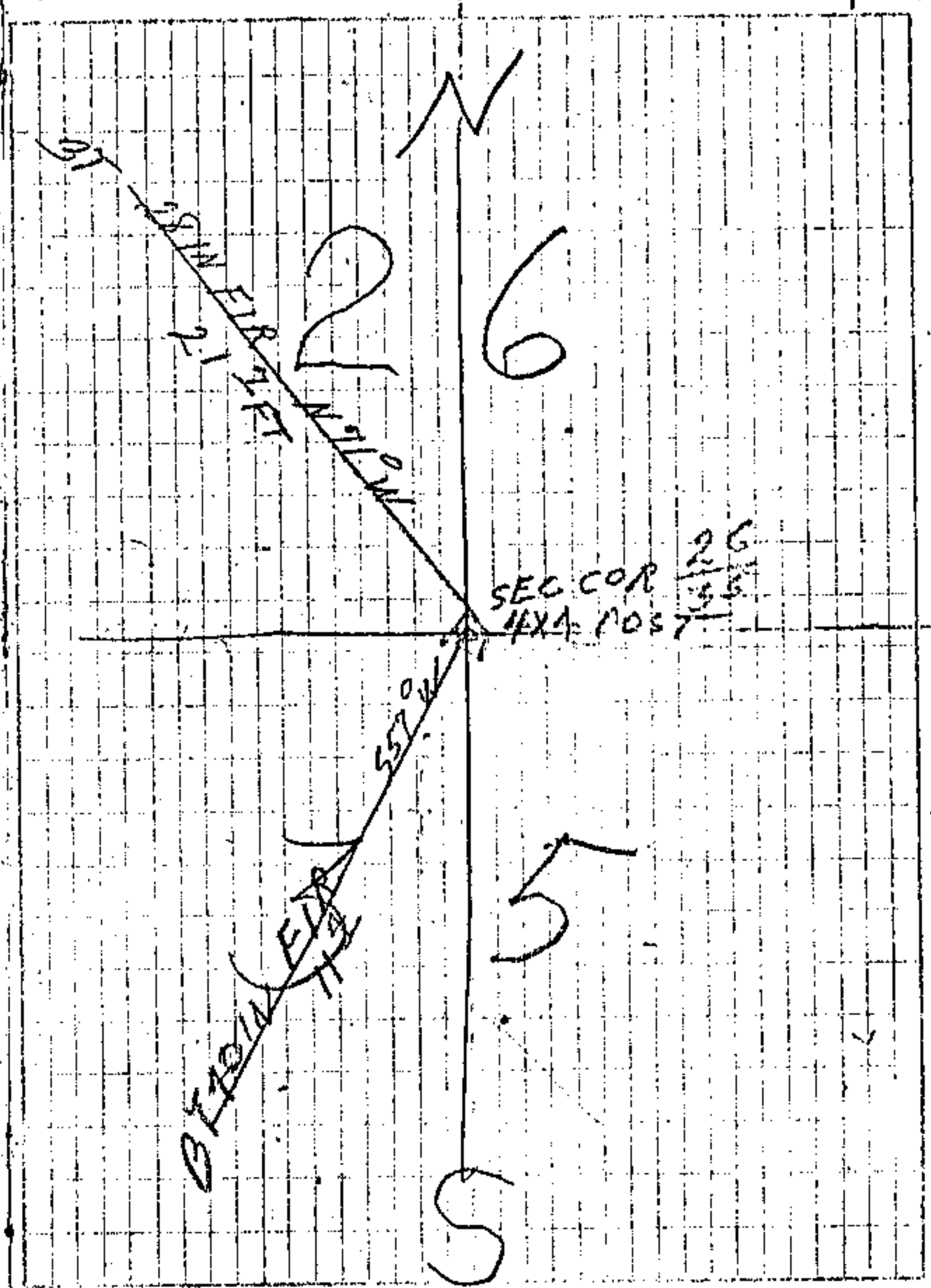
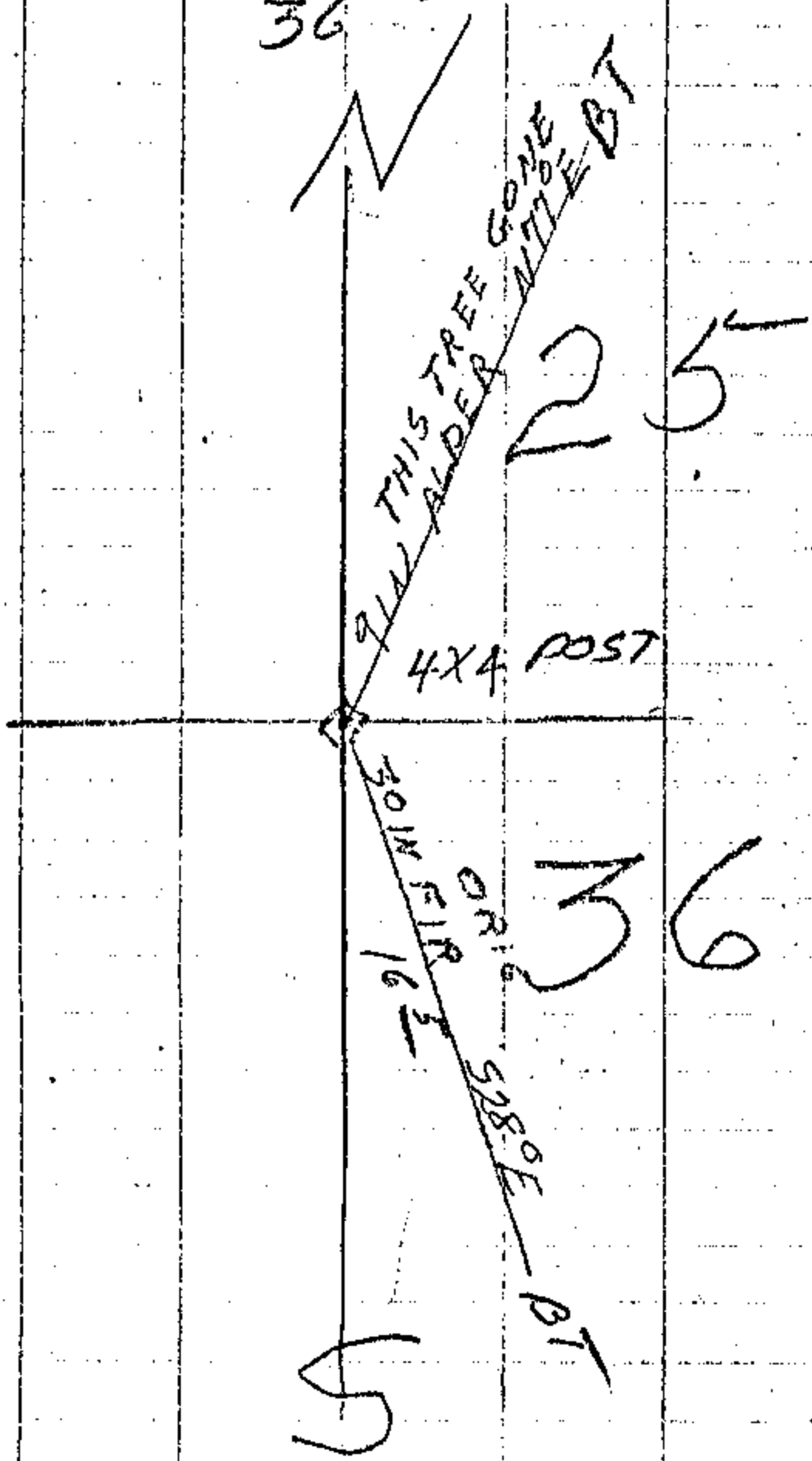


| STA | SLOPE | HORIZ | BEAR | INTSIA | ACRY |
|--|------------------|------------------|------------------------|--------|------------|
| 20193 ² 29145 | | | | | |
| 27114 ² 25116 | 198 ² | 179 ⁰ | | | -32 |
| 28189 ² 27191 | 25 ⁰ | 25 ⁰ | 25 ONLY | | LEV |
| 26199 ² 25189 | 205 ⁰ | 189 ⁴ | 26+77 ⁰ COR | | EL=4.5 FT |
| 25189 ² 24177 | 136 ⁰ | 110 ² | 25/36 | INT | -42 -70 |
| 23137 ² 22137 | 259 ⁰ | 237 ⁰ | | | +24 |
| 22117 ² 21120 | 122 ⁰ | 119 ² | 1/4 SEC 36 ONLY | | +20 |
| 20163 ⁰ 19165 | 97 ⁰ | 75 ¹ | S | INT | +80 +47 |
| | 55 ⁰ | 49 ⁴ | | | +52 |
| 19146 ² | 101 ⁰ | 97 ² | | | +27 |
| 18127 ² | 89 ⁰ | 88 ⁰ | | | +79 |
| 16180 ³ | 197 ⁰ | 147 ² | | | +66 |
| | 88 ⁰ | 71 ² | | | +62 |
| 13147 ² | 295 ⁰ | 258 ⁰ | | INT | +56 |



CLASING COR $\frac{25}{36}$ T22S-R12W

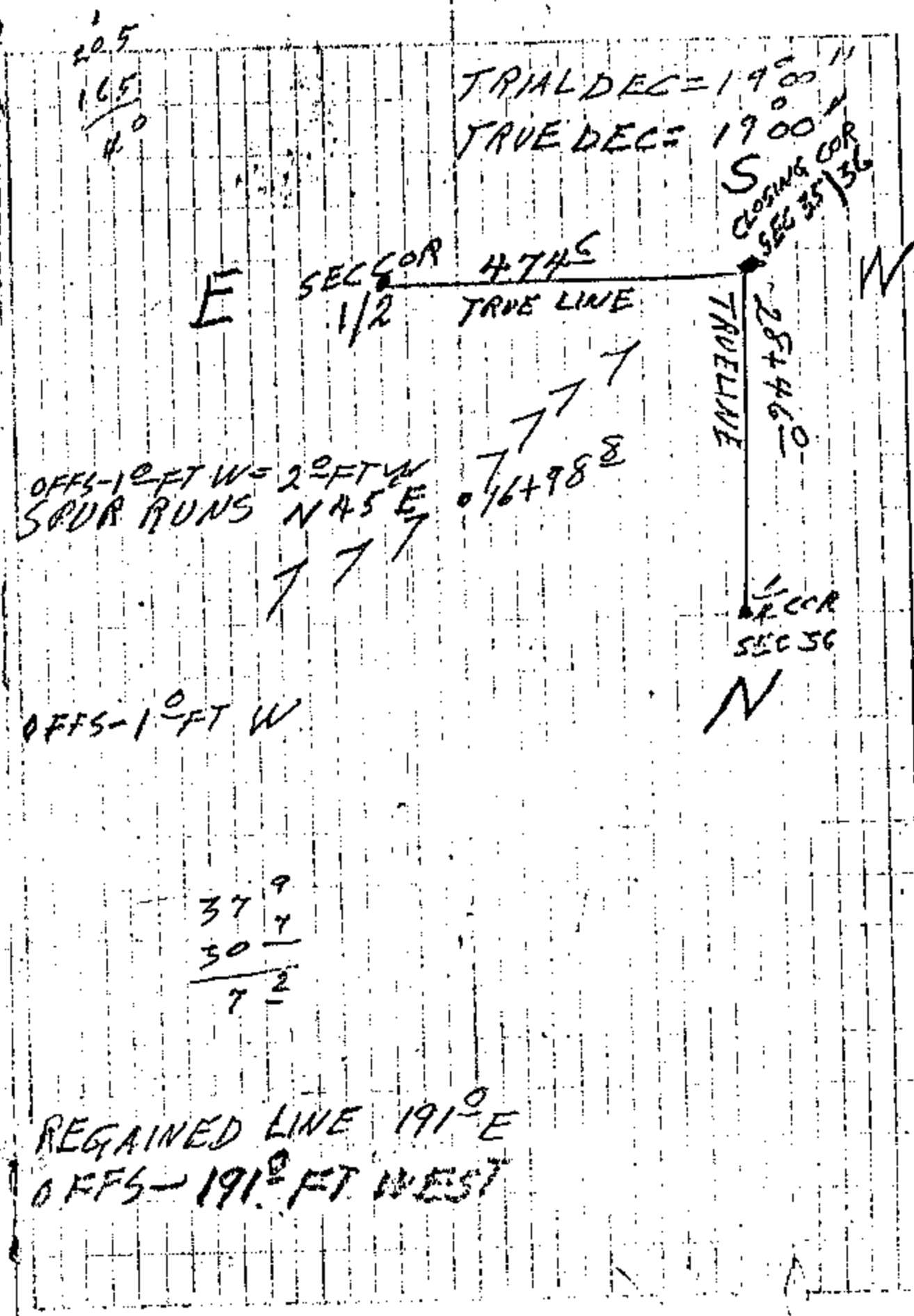
T22S-R12W-SECCOR 26/35



SOUTH FROM COR SEC 36 ONLY

| STATION | ANGLE | BEARING | DISTANCE | LEV |
|--------------------|------------------|------------------|----------|--------------|
| 21489 ⁶ | | | | |
| 21490 ⁶ | | | | |
| 20242 ⁸ | 191° | 655 | +60 | |
| 20443 ⁸ | | 146 ^E | | |
| 19462 ⁶ | 83° | 80 ² | +27 | |
| 19463 ⁶ | | | | |
| 18497 ⁶ | 65° | 65° | LEV | |
| 18498 ⁶ | | | | |
| 16497 ⁸ | 201° | 197 ⁸ | +11 | |
| 16498 ⁸ | | | | |
| 15271 ⁶ | 131° | 126 ² | +28 | |
| 15272 ⁶ | | | | |
| 14471 ⁴ | 109° | 100 ² | +37 | |
| 14472 ⁴ | | | | |
| 13410 ² | 91° | 68 ⁷ | +86 | |
| 13411 ² | 96° | 92 ³ | +28 | INT |
| 11410 ⁴ | 215° | 195 ² | +46 | 11445.4 |
| 11411 ⁴ | | | | SW COR Lot 6 |
| 7439 ⁷ | 232° | 202 ⁷ | +56 | |
| 7440 ⁷ | 177° | 172 ² | +24 | INT |
| | | | | |
| | 521 ² | 524 ⁷ | LEV | |
| | | 558 ⁴ | | |
| 2415 ² | | | | S 20°00' E |
| | 215° | 215° | LEV | |

COR SEC 36 ONLY
21489 2



32+88[?]
 30+28⁰ 252⁰ 260[?] +10
 29+26[±] 115⁰ 101⁸ -54
 28+50² 82⁰ 76⁰ SET CLOS. COR 35/36 - 41
 28+46⁰ 134⁰ 132[?] -14
 27+17⁵ 80⁰ 80⁰ LEL
 139⁰ 133[?] INT +22
 25+03⁸ 187⁰ 159[±] -61
 23+44⁵ 122⁰ 104[?] -60
 22+39[?] 35⁰ 50^L +48
 21+89[±]

32+80[±] ORIG

OFFS - 9⁰ FT - E = 7⁰ FT - E

436[±]
 40[±]
 476[±]

SEC. COR 476[±]

INTERSECTION OF TRIAL LINES

28+50²
 42[±]
 28+46⁰

7225 - RIZM
1/4 COR 36 ONLY

TOP OF MAIN RIDGET 21+89[±] 777[±] EAN

NORTH FROM SE COR LOT #6 SEC 36
 T 225. N 12 W
 STA SLOPE 10 A 12 BEAR INT STA ARMY

SET TAMP NE COR LOT #6

| | | | | |
|--------------------|------------------|------------------|-----|-----|
| 11145- | 2 ⁴ | 3 ³ | | LEV |
| 11142 ⁷ | 130 ⁵ | 114 ⁴ | | -54 |
| 10728 ⁵ | 102 ⁰ | 96 ¹ | | -36 |
| 9432- | 285 ⁵ | 265 ² | | +42 |
| 6769 ⁰ | 57 ⁰ | 57 ⁰ | | LEV |
| 6712 ⁰ | 276 ⁰ | 274 ² | | -40 |
| 3437 ⁵ | 121 ⁰ | 117 ² | | -23 |
| 219 ⁶ | 54 ⁰ | 54 ⁰ | | LEV |
| 1765 ⁶ | 16 ⁰ | 16 ⁰ | | LEV |
| 0443 ⁶ | 106 ⁰ | 106 ⁰ | INT | LEV |
| 0400 ⁰ | 46 ⁰ | 43 ⁵ | | +38 |

OFFS - 2⁰ FT E

SE COR LOT #1

East from SW corner Lot 6 =

SW. COR LOT #6 12983 TR25-R12W

STA SLOPE HORIZ BEAR INT STA ABNT

12+98³ SET TEMP SE. COR LOT #6

389 LEV

12+59⁴

129⁰ 103⁵ -74

11+55⁹

13⁰ 13⁰ LEV

11+42⁹

-10⁶ 54⁶ LEV

143⁰ 4 10³ +90

92⁰ 92⁰ INT +36

9+28⁰

237⁰ 219¹ +41

7+08⁹

220⁰ 203⁵ +41

5+05⁴

90⁰ 79² INT +52

154⁰ 134² INT +56

180⁰ 168⁸ INT -37

1+21⁸

24⁰ 24⁰ LEV

105⁰ 97⁸ INT -40

0+00⁰ SW COR LOT #6

