

M 115-26

FILED

JUN 25 1992

SURVEY FOR

U S NATIONAL BANK OF OREGON

COUNTY SURVEYOR  
DOUGLAS COUNTY, OREGON

SOUTH HALF N W 1/4 AND NORTH HALF S W 1/4, SEC 35  
T 22S , R 6W , W M

DOUGLAS COUNTY, OREGON

JUNE 10, 1992

By  
BRANCH ENGINEERING  
212 'Q' Street  
Springfield, Oregon 97477  
(503) 746-0637

#### NARRATIVE

The purpose of this survey was to identify property managed by United States Bank of Oregon and the City of Drain located in the west half of Section 35, Township 22 South, Range 6 West of the Willamette Meridian, Douglas County, Oregon

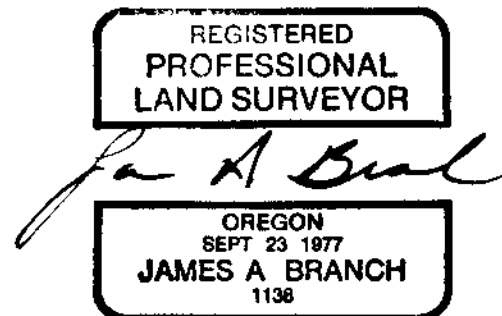
In order to perform the survey, it was necessary to subdivide Section 35 Said Section had portions of the exterior boundary established by Gordon and Gardner during GLO Contract Number 52 dated February 15, 1855 Chapman & Nicklin performed a resurvey of Section 35 during GLO Contract Number 664 locating the West Quarter Corner set during the earlier 1855 survey at 41 18 Chains north of the Southwest Corner of said Section contrary to the corresponding 1855 distance of 40 0 Chains Chapman & Nicklin continued north to the Northwest Corner of Section 35 determining the total distance to be 82 22 chains providing the controlling courses along the west boundary of Section 35 During 1943, BLM performed a dependent resurvey along the north boundary of Sections 2, 3, 4 & 5, Township 23 South, Range 6 West of the Willamette Meridian recovering several of the earlier GLO monuments, perpetuating their positions This 1943 BLM survey provided the basis of bearing and control for the south boundary of Section 35 The Sections along the north boundary of Township 23 South were established first, creating a senior boundary that adjacent Sections to the north must close on per instructions indicated in the 1973 BLM Manual The boundary of Section 35 was established prior to Section 34 during GLO Contract Number 52, so the west boundary of Section 35 is senior to the east boundary of Section 34, also per the 1973 BLM Manual

During 1958, Wilford Haines performed a survey along the boundary common to Section 34 and Section 35 although no plat was filed, copies of his field notes (H-107) provided by the Douglas

C.S. File No. 63/48-4A

County Surveyor's Office indicate a random traverse was run between the Northeast Corner of said Section 34 southerly to the Southeast Corner of said Section. He then computed and set the Quarter Corner and the North and South Sixteenth Corners for Section 35 along the westerly boundary. "T" irons marked "Haines" were located and tied during the control traverse, then compared with the computed position as per the 1897 GLO plat. Haines' Quarter Corner for the west boundary of Section 35 was found slightly south of our computed position. Although the Haines Quarter Corner was not set from original evidence, we believe he followed the instructions and intent of the 1897 GLO plat. The monument has been in existence since 1958 and thus was accepted as the true corner. The North Sixteenth Corner set by Haines was also located and tied during the control traverse, then compared with computed position as per the 1897 plat. We found the Haines Monument fit alignment and distance between controlling corners within reasonable limits, and also was accepted. However, review of Haines' field notes indicated the South Sixteenth Corner along the west boundary of Section 35 appears to have been set in error during his 1958 survey. In particular, his field notes list latitude and departure of the nearest traverse control point and his computed ties to set said monument. Haines computed the South Sixteenth Corner to be on line and at the midpoint between the Quarter Corner (Section 35 only) and the Section Corner (Section 34 and 35 only). When he set this corner, his field notes indicate a distance of 421.73 feet from his nearest control point was required. An error in subtraction from his initial chaining point indicated said corner was set 431.73 feet from his control point, field ties confirm this monument being south and east of computed position. Therefore, we reset the South Sixteenth Corner of Section 35 noting Haines' corner as a reference object to the new monument.

The South Quarter Corner for Section 35 only, set by BLM during 1943, was searched for during the control traverse using the position determined from the nearest controlling monuments east and west. However, no sign of the monument or accessories were found, perhaps destroyed during logging operations since 1943. The East Quarter Corner for Section 35 was set during 1855 GLO Contract Number 52, but no original evidence was found during the search for said monument. Section 35 was then subdivided as shown on the accompanying plat, the required sixteenth corners set according to guidelines and procedures detailed in the 1973 BLM Manual.



M 115-26

FILED

OREGON CORNER RESTORATION FORM

JF

Section 35 Township 22S Range 6W

JUN 25 1992

County DOUGLAS Date 5/27/92

COUNTY SURVEYOR  
DOUGLAS COUNTY, ORE.

Corner Designation

SOUTH 1/16 CORNER  
SECTION 35 ONLY

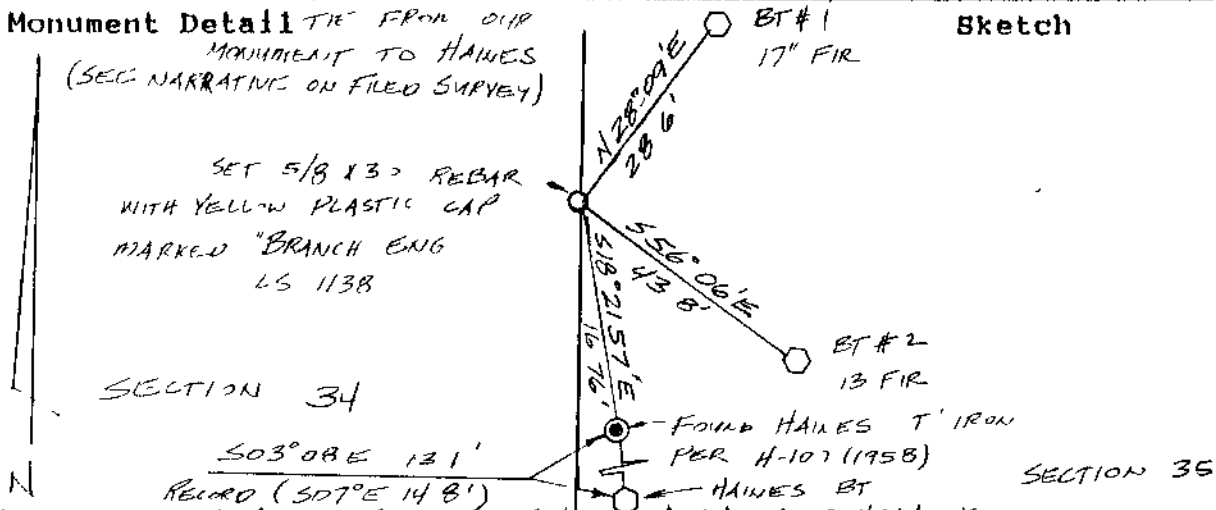
- Condition Report Only
- Not Found
- Renewed
- Unrecorded
- Surveyed In
- Referenced Out

Previous Renewals/Surveys, etc. SET BY WILFORD HAINES IN 1958 AS PER FIELD SURVEY (H-107) NOTES ARE ON FILE AT DOUGLAS COUNTY SURVEYOR'S OFFICE.

Monument(s) & Accessories Found: (Condition and Source)

FOUND TYPICAL HAINES "T" IRON MARKED "HAINES 239"  
29' HEMLock BEARS S03°08'E 131 FEET  
(RECORD 7' WHITE FIR S07°E 14.8 FEET)  
DID NOT ACCEPT POSITION OF THE HAINES SOUTH 1/16 CORNER SECTION 35 BECAUSE OF DISCOVERING SUBTRACTION ERROR IN HAINES FIELD NOTES WHICH SHOWS HE SET THE MONUMENT 10 FEET SOUTHERLY OF HIS COMPUTED POSITION. WE ALSO HAD A DIFFERENCE IN MEASUREMENT ALONG THE SECTION LINE WHICH CREATED THE COMPUTED

Monument Detail FROM OLD MONUMENT TO HAINES (SEE NARRATIVE ON FILED SURVEY)



Monument Set (Procedures and Description) 29' HEMLock (RECORD 7' WHITE FIR)

SET 5/8 X 30 REBAR WITH YELLOW PLASTIC CAP MARKED "BRANCH ENG LS 1138" CORNER WAS SET AT MIDDLEPOINT BETWEEN QUARTER CORNER FOR SECTION 35 ONLY AND THE SECTION CORNER FOR SECTIONS 34 AND 35 ONLY.

New Accessories

- 1) 17' FIR SCRIBED S 1/16 S35 BT BEARS  
N28°09'E 28.6 FEET
- 2) 13' FIR SCRIBED S 1/16 S35 BT BEARS  
S56°06'E 43.8 FEET

Location & Comments

Surveyor's Seal

Compass Declination \_\_\_\_\_  
 Firm/Agency BRANCH  
ENGINEERING  
 Address 212 Q STREET  
SPRINGFIELD OR 97477  
 Party Chief G HOFFMAN  
 Notes \_\_\_\_\_  
 Witness R ANDREASSEN



FILED

OREGON CORNER RESTORATION FORM

JUN 25 1992

Section 35 Township 22S Range 6W

County DOUGLAS Date 5/26/92

COUNTY SURVEYOR  
DOUGLAS COUNTY, ORE.

Corner Designation

CENTER SOUTH 1/16 CORNER

SECTION 35

- Condition Report Only
- Not Found
- Renewed
- Unrecorded
- Surveyed In
- Referenced Out

Previous Renewals/Surveys, etc. NONE

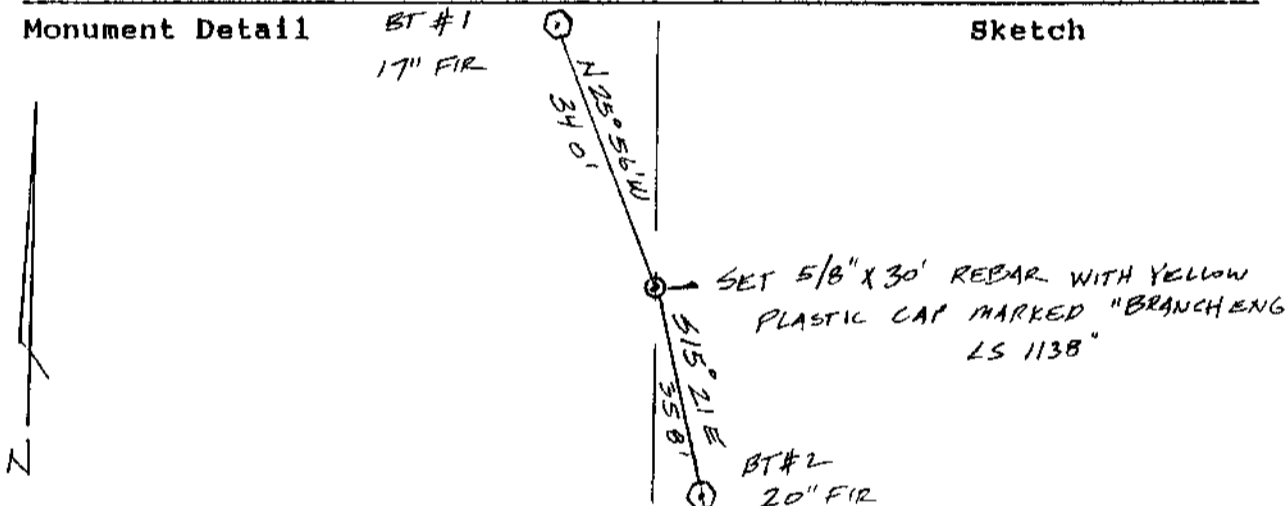
Monument(s) & Accessories Found: (Condition and Source)

NONE

Monument Detail

BT #1  
17" FIR

Sketch



Monument Set (Procedures and Description)

SET 5/8 x 30\" REBAR WITH YELLOW PLASTIC CAP MARKED BRANCH ENG LS 1138\" CORNER WAS SET ON LINE AT THE MID PT BETWEEN THE CALCULATED CENTER QUARTER CORNER AND THE SOUTH QUARTER SECTION CORNER

New Accessories

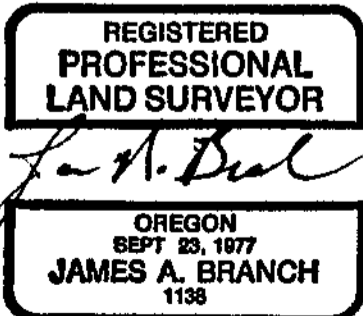
1) 17\" FIR SCRIBED 'CS 1/16 S35 BT' BEARS N 25° 56' W 34.0 FEET

2) 20\" FIR SCRIBED 'CS 1/16 S35 BT' BEARS S 15° 21' E 35.8 FEET

Location & Comments

Surveyor's Seal

Compass Declination \_\_\_\_\_  
 Firm/Agency BRANCH ENGINEERING  
 Address 212 Q STREET SPRINGFIELD, OR 97477  
 Party Chief G HOFFMAN  
 Notes \_\_\_\_\_  
 Witness R ANDREASEN



M115-26

FILED

JUN 25 1992

OREGON CORNER RESTORATION FORM

Section 35 Township 22 S Range 6 W

County DOUGLAS Date 5/26/92

COUNTY SURVEYOR  
DOUGLAS COUNTY, ORE.

Corner Designation

CENTER NORTH 1/16 CORNER  
SECTION 35

- Condition Report Only
- Not Found
- Renewed
- Unrecorded
- Surveyed In
- Referenced Out

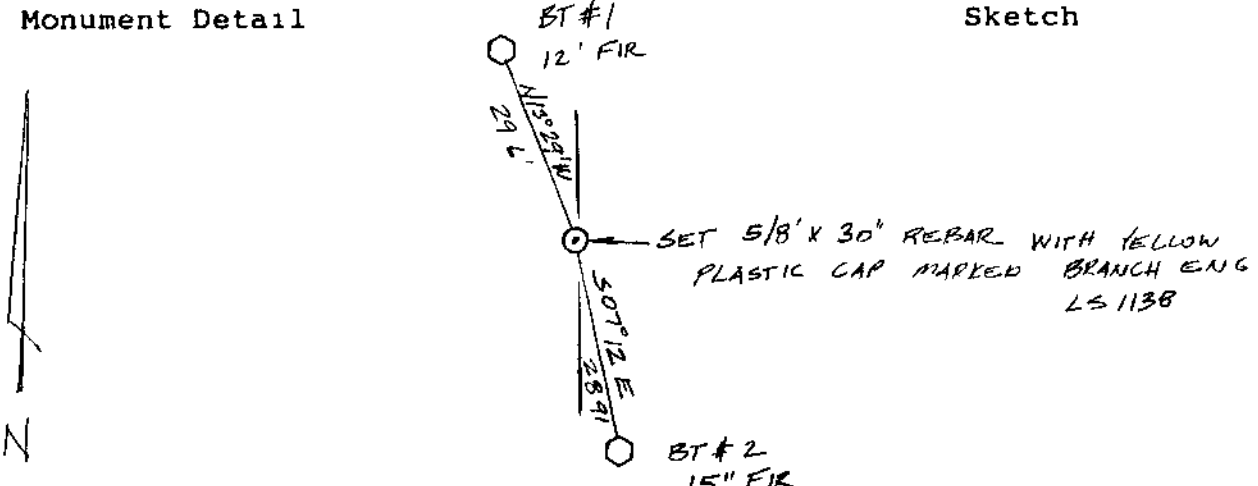
Previous Renewals/Surveys, etc NONE

Monument(s) & Accessories Found: (Condition and Source)

NONE

Monument Detail

Sketch



Monument Set (Procedures and Description)

SET 5/8" X 30" REBAR WITH YELLOW PLASTIC CAP MARKED BRANCH  
ENG LS 1138". CORNER WAS SET ON LINE AT THE  
MIDPOINT BETWEEN THE CALCULATED CENTER QUARTER  
CORNER AND THE NORTH QUARTER SECTION CORNER.

New Accessories

1) 12" FIR SCRIBED 'CN 1/16 S 35 BT' BEARS  
N 13° 29' W 296 FEET

2) 15" FIR SCRIBED 'CN 1/16 S 35 BT' BEARS  
S 07° 12' E 289 FEET

Location & Comments

Surveyor's Seal

Compass Declination \_\_\_\_\_  
 Firm/Agency BRANCH  
ENGINEERING  
 Address 212 Q STREET  
SPRINGFIELD OR 97417  
 Party Chief G. HOFFMAN  
 Notes \_\_\_\_\_  
 Witness R ANDREASEN

REGISTERED  
PROFESSIONAL  
LAND SURVEYOR

*James A. Branch*

OREGON  
SEPT 23 1977  
JAMES A BRANCH  
1138

M 115-26

FILED

JUN 25 1992

OREGON CORNER RESTORATION FORM

Section 35 Township 22 S Range 6 W  
County DOUGLAS Date 5/25/92

COUNTY SURVEYOR  
DOUGLAS COUNTY, OREGON

Corner Designation

NORTH 1/16 CORNER  
SECTION 35 ONLY

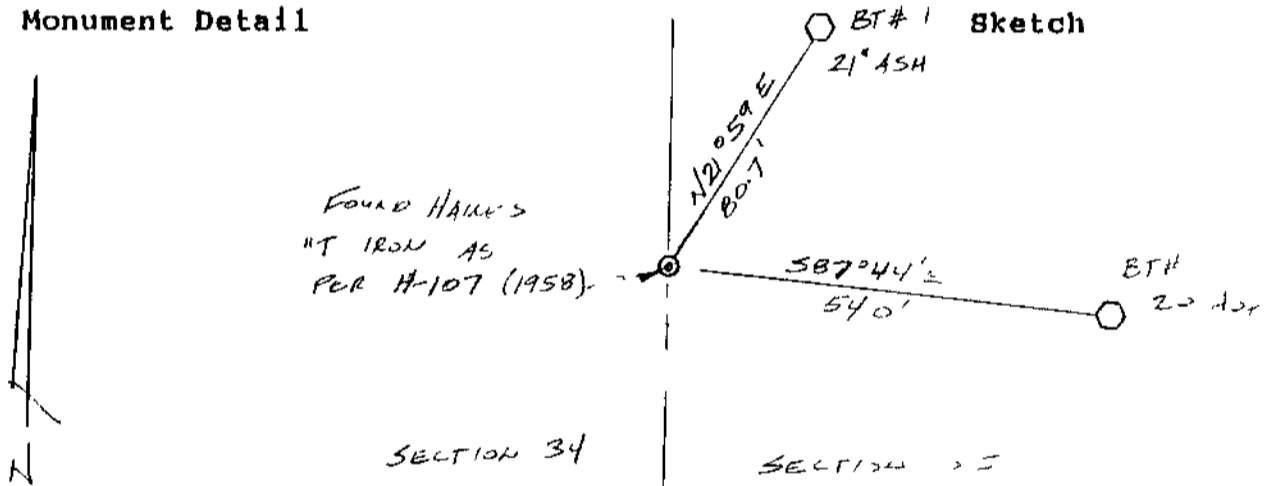
- Condition Report Only
- Not Found
- Renewed
- Unrecorded
- Surveyed In
- Referenced Out

Previous Renewals/Surveys, etc. SET BY WILFORD HAINES IN 1958 AS PER FIELD SURVEY (H-107) NOTES ARE ON FILE AT DOUGLAS COUNTY SURVEYORS OFFICE.

Monument(s) & Accessories Found: (Condition and Source)

FOUND TYPICAL HAINES "T" IRON MARKED HAINES 239"  
"T" IRON WAS SET IN 1958 DURING FIELD SURVEY (H-107)

Monument Detail



Monument Set (Procedures and Description)

\_\_\_\_\_  
\_\_\_\_\_  
\_\_\_\_\_

New Accessories

- 1) 21" ASH SCRIBED N 1/16 S 35 BT' BEARS  
N 21° 59' E 80.7 FEET
- 2) 25" ASH SCRIBED "N 1/16 S 35 BT' BEARS  
S 87° 44' E 54.0 FEET

Location & Comments

Surveyor's Seal

Compass Declination \_\_\_\_\_  
 Firm/Agency BRANCH  
ENCLAVE  
 Address 212 W STREET  
SPRINGFIELD, OR 97117  
 Party Chief G. HOFFMAN  
 Notes \_\_\_\_\_  
 Witness R. AUCKLAND

REGISTERED  
PROFESSIONAL  
LAND SURVEYOR

*James A. Branch*  
 OREGON  
 SEPT 23 1977  
 JAMES A. BRANCH  
 1138

JUN 25 1992

OREGON CORNER RESTORATION FORM

Section 35 Township 22S Range 6W

COUNTY SURVEYOR  
DOUGLAS COUNTY, ORE.

County DOUGLAS Date 5/26/92

Corner Designation

WEST 1/4 CORNER  
SECTION 35 ONLY

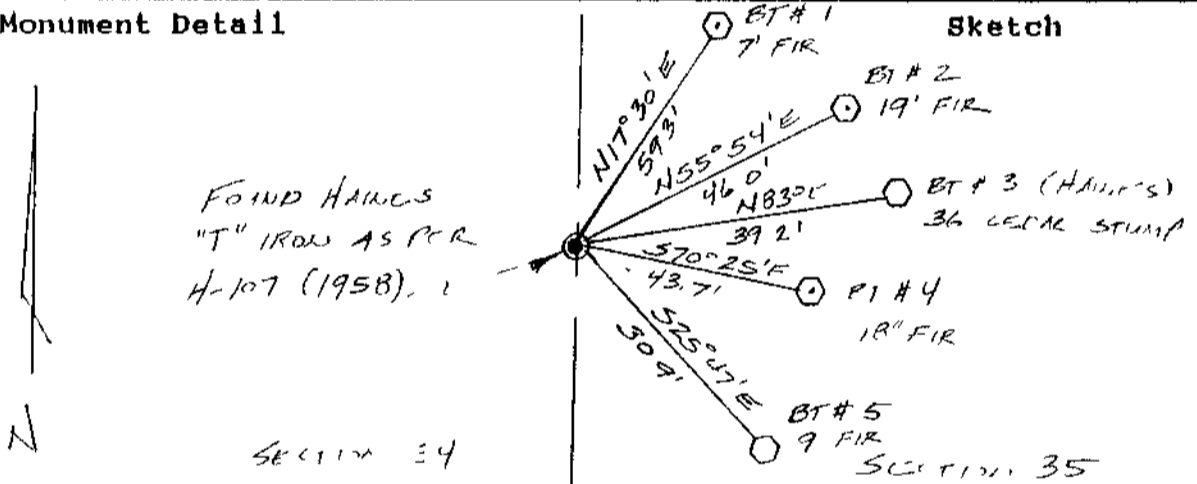
- Condition Report Only
- Not Found
- Renewed
- Unrecorded
- Surveyed In
- Referenced Out

Previous Renewals/Surveys, etc. SET BY WILFORD HAINES IN 1958 AS PER FIELD SURVEY (H-107) NOTES ARE ON FILE AT DOUGLAS COUNTY SURVEYORS OFFICE

Monument(s) & Accessories Found: (Condition and Source)

FOUND TYPICAL HAINES "T" IRON WITH BRASS WASHER MARKED HAINES 239" (NOTES ON FILE AT DOUGLAS COUNTY SURVEYORS OFFICE) 36' CEDAR STUMP BEARS N83°E 39.2 FEET (REAR 40" CEDAR STUMP N82°E 38.2' FEET B.O.)

Monument Detail



Monument Set (Procedures and Description)

New Accessories

- 1) 7' FIR BEARS N17°30'E 59.3 FEET
  - 2) 19' FIR BEARS N55°54'E 46.0 FEET
  - 3) 18" FIR BEARS S70°25'E 43.7 FEET
  - 4) 9' FIR BEARS S25°47'E 30.9 FEET
- SCRIBED 1/4 S35 BT"

Location & Comments

Surveyor's Seal

Compass Declination \_\_\_\_\_

Firm/Agency BRANCH

ENGINEERING

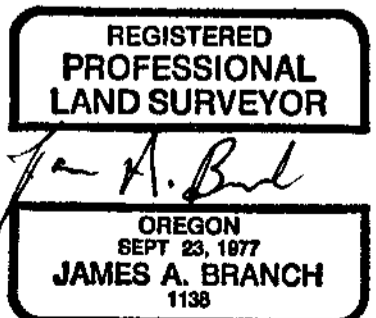
Address 212 Q STREET

SPRINGFIELD, OR 97477

Party Chief L. HOFFMAN

Notes \_\_\_\_\_

Witness R. ANDERSEN



#167+