

M116 47

FILED

*JK*  
AUG 23 1990

OREGON CORNER RESTORATION FORM

Section 26 Township 22S Range 6W

County DOUGLAS Date 8/13/90

COUNTY SURVEYOR  
DOUGLAS COUNTY, ORE.

Corner Designation

CENTER WEST 1116  
CORNER SECTION 26

- Condition Report Only
- Not Found
- Renewed
- Unrecorded
- Surveyed In
- Referenced Out

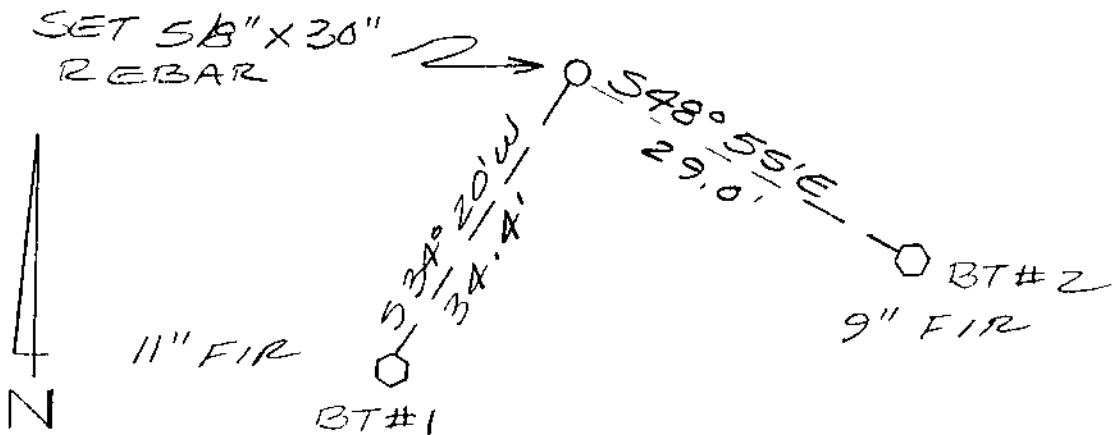
Previous Renewals/Surveys, etc. NONE

Monument(s) & Accessories Found: (Condition and Source)

NONE

Monument Detail

Sketch



Monument Set (Procedures and Description)

SET 5/8" X 30" REBAR WITH YELLOW PLASTIC CAP MARKED "BRANCH ENG LS1138". CORNER WAS SET ON LINE AT THE MIDPOINT BETWEEN THE COMPUTED CENTER QUARTER AND THE WEST QUARTER CORNERS.

New Accessories

1) 11" FIR SCRIBED "CW 1116 S 26 BT" BEARS S 34° 20' W 34.4 FEET.

2) 9" FIR SCRIBED "CW 1116 S 26 BT" BEARS S 48° 55' E 29.0 FEET.

Location & Comments

Surveyor's Seal

Compass Declination

Firm/Agency BRANCH ENGINEERING

Address 212 Q STREET SPRINGFIELD, OR

Party Chief G. HOFFMAN

Notes

Witness L. CARSON

REGISTERED  
PROFESSIONAL  
LAND SURVEYOR

*James A. Branch*  
OREGON  
SEPT 23 1977  
JAMES A. BRANCH  
1138

M 110-47

FILED

OREGON CORNER RESTORATION FORM

216  
233  
AUG 22 1990

Section 26 Township 22S Range 6W

County DOUGLAS Date 8/13/90

COUNTY SURVEYOR  
DOUGLAS COUNTY, ORE.

Corner Designation

SOUTH 1116 CORNER  
SECTION 25 & 26

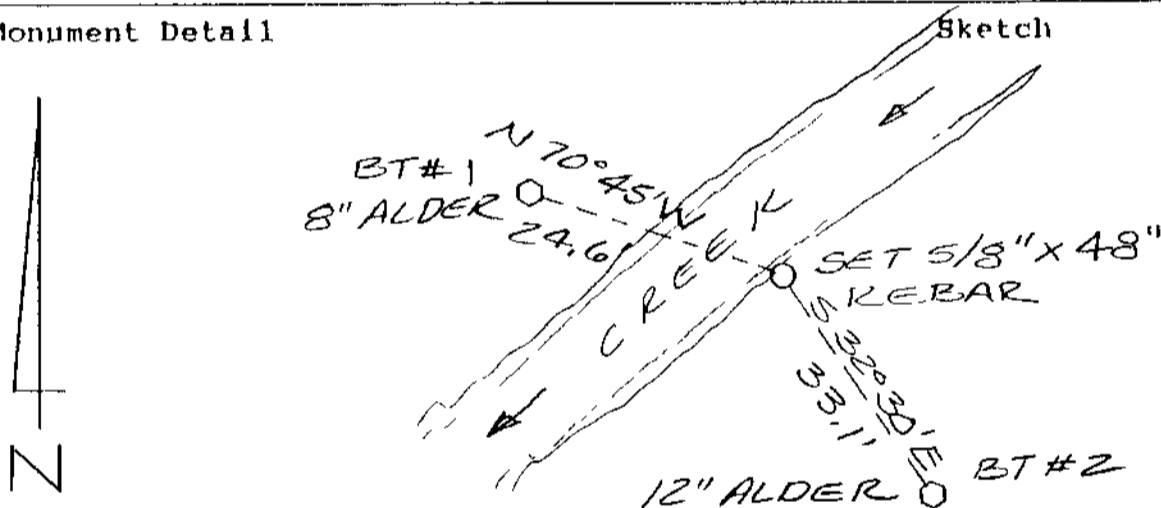
- Condition Report Only
- Not Found
- Renewed
- Unrecorded
- Surveyed In
- Referenced Out

Previous Renewals/Surveys, etc. NONE

Monument(s) & Accessories Found: (Condition and Source)

NONE

Monument Detail



Monument Set (Procedures and Description)

SET 5/8" X 30" REBAR WITH YELLOW PLASTIC CAP MARKED "BRANCH ENGL 1138". CORNER WAS SET ON LINE BETWEEN NE COR. AND SE COR. OF SECTION 26 AT ITS PROPER PROPORTIONED DISTANCE.

New Accessories

- 1) 8" ALDER SCRIBED "S 1116 S 26 BT" BEARS N 70° 45' W 24.6 FEET.
- 2) 12" ALDER SCRIBED "S 1116 S 25 BT" BEARS S 32° 30' E 33.1 FEET.

Location & Comments

Surveyor's Serial

CORNER FALLS Compass Declination  
AT THE SOUTHERLY Firm/Agency BRANCH  
EDGE OF AN ENGINEERING  
APPROXIMATELY Address 212 Q STREET  
20 FOOT SPRINGFIELD, OR  
11/12 CREEK. Party Chief G. HOFFMAN

REGISTERED  
PROFESSIONAL  
LAND SURVEYOR

James A. Branch  
OREGON  
SEPT 23, 1977  
JAMES A. BRANCH  
1138

Notes  
Witness L. LARSON

63/48-36

M 110-47

FILED

3/8  
23  
AUG 22 1990

OREGON CORNER RESTORATION FORM

Section 26 Township 22S Range 6W

County DOUGLAS Date 8/13/90

COUNTY SURVEYOR  
DOUGLAS COUNTY, ORE.

Corner Designation

CENTER SOUTH 1/16  
CORNER SECTION 26

- Condition Report Only
- Not Found
- Renewed
- Unrecorded
- Surveyed In
- Referenced Out

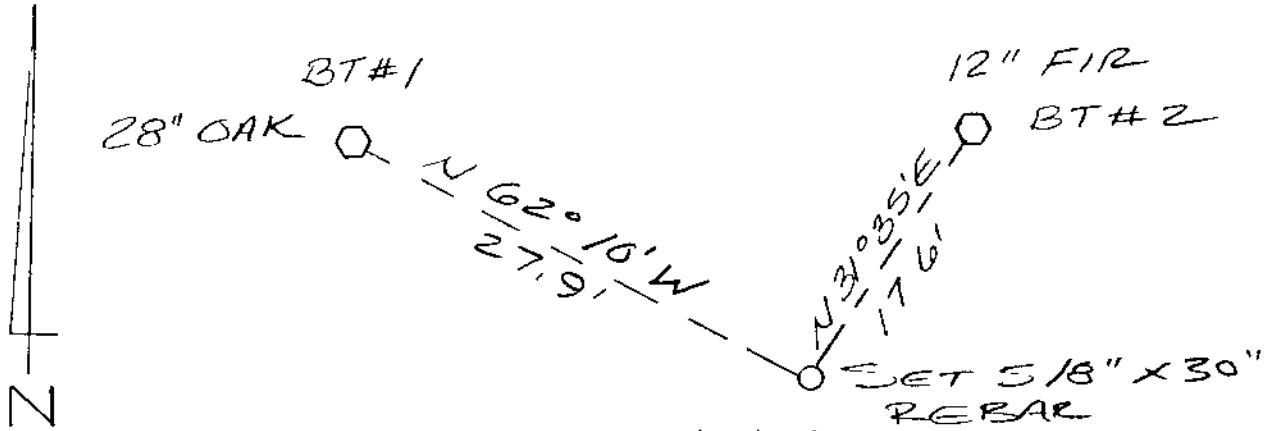
Previous Renewals/Surveys, etc. NONE

Monument(s) & Accessories Found: (Condition and Source)

NONE

Monument Detail

Sketch



Monument Set (Procedures and Description)

SET 5/8" X 30" REBAR WITH YELLOW PLASTIC CAP MARKED "BRANCH ENG LS 1138". CORNER WAS SET ON LINE AT THE MIDPOINT BETWEEN THE CALCULATED CENTER QUARTER AND THE SOUTH QUARTER SECTION CORNERS.

New Accessories

- 1) 28" OAK SCRIBED "CS 1116 S 26 BT BEARS N 62° 10' W 27.9 FEET
- 2) 12" FIR SCRIBED "CS 1116 S 26 BT BEARS N 31° 35' E 17.6 FEET

Location & Comments

Surveyor's Seal

Compass Declination \_\_\_\_\_

Firm/Agency BRANCH ENGINEERING

Address 212 Q STREET SPRINGFIELD, OR

Party Chief G. HOFFMAN

Notes \_\_\_\_\_

Witness L. CARSON

REGISTERED  
PROFESSIONAL  
LAND SURVEYOR

James H. Branch  
OREGON  
SEPT 23 1877  
JAMES A BRANCH  
1138

63/48-30

M 110-47

FILED

AUG 23 1990

OREGON CORNER RESTORATION FORM

Section 26 Township 22S Range 6W

County DOUGLAS Date 8/13/90

COUNTY SURVEYOR  
DOUGLAS COUNTY, ORE.

Corner Designation

SOUTHWEST 1/16 CORNER  
SECTION 26

- Condition Report Only
- Not Found
- Renewed
- Unrecorded
- Surveyed In
- Referenced Out

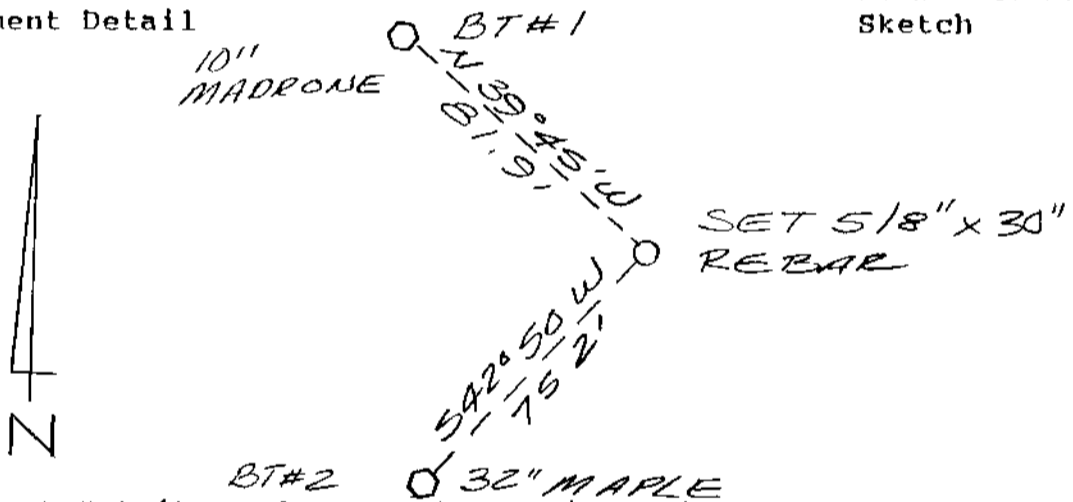
Previous Renewals/Surveys, etc. NONE

Monument(s) & Accessories Found: (Condition and Source)

NONE

Monument Detail

Sketch



Monument Set (Procedures and Description)

SET 5/8" x 36' REBAR WITH YELLOW PLASTIC CAP MARKED "BRANCH ENG LS 1138". CORNER WAS SET AT THE STRAIGHT LINE INTERSECTION POINT BETWEEN THE S 1/16 AND CS 1/16 AND THE CW 1/16 AND W 1/16 S 26

New Accessories

1) 10" MADRONE SCRIBED "SW 1/16 S 26 BT" BEARS N 39° 45' W 81.9 FEET

2) 32" MAPLE SCRIBED "SW 1/16 S 26 BT" BEARS S 42° 50' W 75.2 FEET.

Location & Comments

Surveyor's Seal

Compass Declination

Firm/Agency BRANCH ENGINEERING

Address 212 Q STREET SPRINGFIELD, OR

Party Chief G. HOFFMAN

Notes

Witness L. LARSON

REGISTERED PROFESSIONAL LAND SURVEYOR

OREGON  
SEPT 23 1977  
JAMES A. BRANCH  
1138

63/48-3d