

M103-74

FILED

APR 10 1987

OREGON CORNER RESTORATION FORM

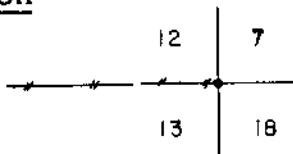
Section 13 Township 23S Range 8W

COUNTY SURVEYOR
DOUGLAS COUNTY, ORE.

County Douglas Date 01-21-87

Corner Designation

N.E. Corner
Section 13



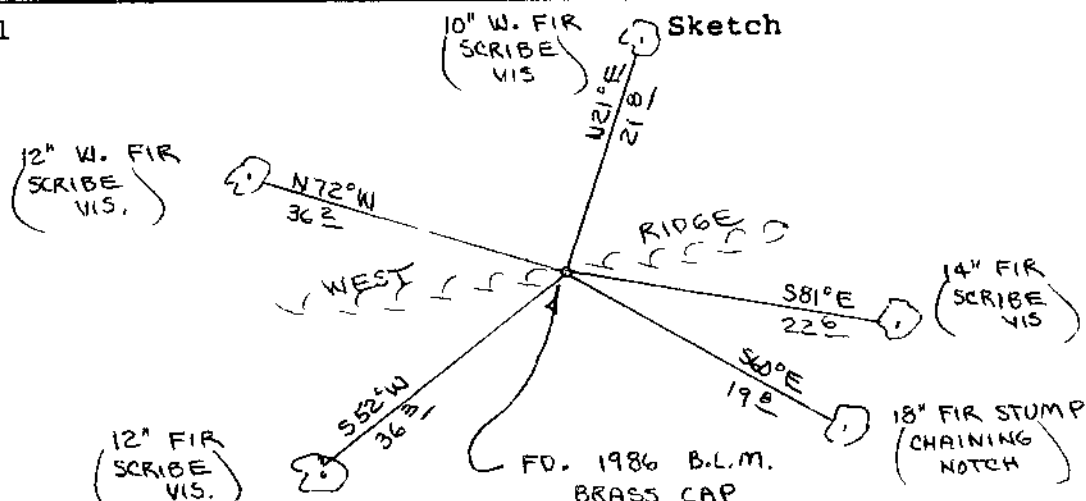
- Condition Report Only
- Not Found
- Renewed
- Unrecorded
- Surveyed In
- Referenced Out

Previous Renewals/Surveys, etc. Original G.L.O. Survey by Armstrong & Hutchinson in 1857. A 1964 B.L.M. Survey by Brooks & Peterson & a 1970 B.L.M. Survey by James Jelley. Also a 1986, unapproved,

Monument(s) & Accessories Found: (Condition and Source)
B.L.M. Survey by Harvey Wofford.

- Found a 1986 B.L.M. Brass Cap set firmly in the ground,
- 18" Fir Stump, S60E, 19.8' (Axe Marks), 1857 BT. Rec. S60E, 19.8'
(This stump has a chaining notch cut into lower edge of blaze)
- 10" W. Fir, N21E, 21.8' (Scribe Vis.), 1986 Bt. No Record.
- 12" W. Fir, N72W, 36.2' (Scribe Vis.), 1986 BT. No Record.
- 12" Fir, S52W, 36.3' (Scribe Vis.), 1986 BT. No Record.
- 14" Fir, S81E, 22.6' (Scribe Vis.), 1986 BT. No Record.

Monument Detail



Monument Set (Procedures and Description)

New Accessories

Set aluminum fence post, with survey attention sign attached to, beside brass cap. Painted all B.T.'s red.

Location & Comments

Corner lies on slight West slope and is on top of a ridge. Ridge bears East-West

Compass Declination 20½

Firm/Agency Roberts Surveying Inc.

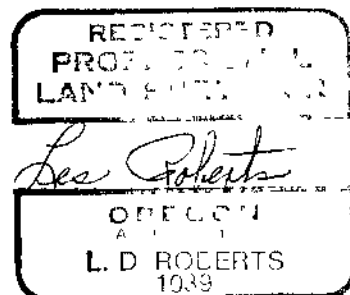
Address 29 West 29th St. Eugene, Oregon 97405

Party Chief Les Roberts

Notes Ted Baker

Witness Jim Metzler

Surveyor's Seal



C.S. File No. 63/46-6A

M103-7A

FILED

APR 10 1987

OREGON CORNER RESTORATION FORM

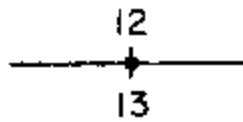
Section 13 Township 23S Range 8W

County Douglas Date 01-19-87

COUNTY SURVEYOR
DOUGLAS COUNTY, ORE.

Corner Designation

North $\frac{1}{4}$ Corner
Section 13



- Condition Report Only
- Not Found
- Renewed
- Unrecorded
- Surveyed In
- Referenced Out

Previous Renewals/Surveys, etc. Original G.L.O. Survey by Dennis Hathorn in 1857. 1970 Cadastral Survey by James E. Jelley and a 1986 unapproved B.L.M. Survey by Harvey Wofford.

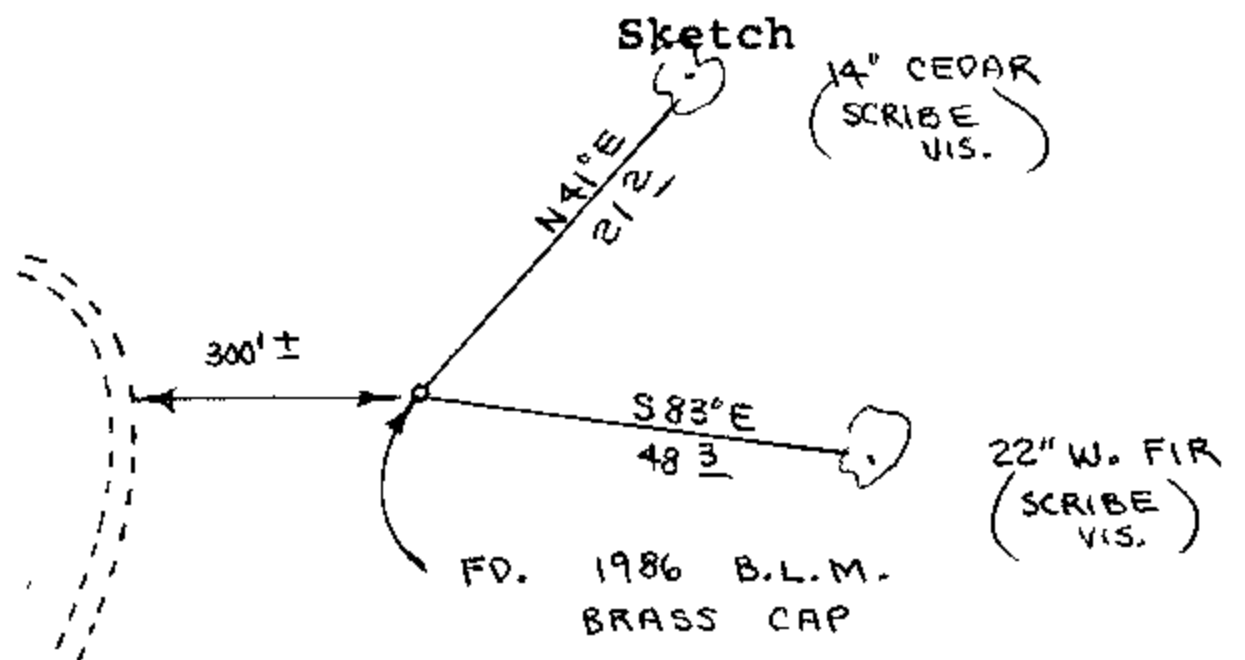
Monument(s) & Accessories Found: (Condition and Source)

Found 1986 B.L.M. Brass Cap set firmly in ground.

14" Cedar, N41E, 21.2' (Scribe Vis.), 1970 BT. No record.

22" W. Fir, S83E, 48.3' (Scribe Vis.), 1970 BT. No Record.

Monument Detail



Monument Set (Procedures and Description)

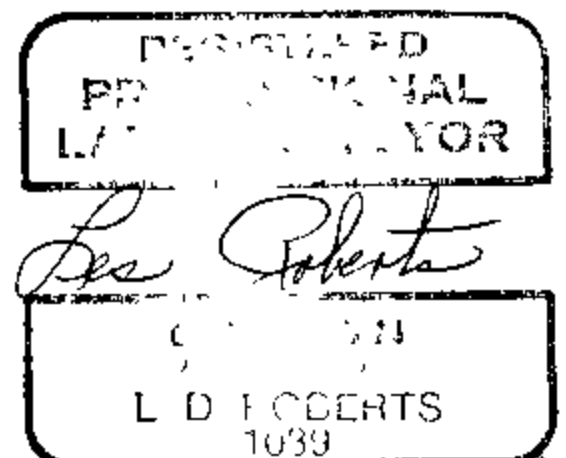
New Accessories

Set metal fence post, with survey attention sign attached to, beside brass cap. Painted all B.T.'s red.

Location & Comments

Corner lies on North Compass Declination 20 1/2
slope about 300' Firm/Agency Roberts
East of graveled Surveying Inc.
logging road. Address 29 West 29 Street
Eugene, Oregon 97405
Party Chief Ted Baker
Notes Ted Baker
Witness Les Roberts

Surveyor's Seal



C.S. File No. 63/96-66

M 103-74

FILED

APR 10 1987

OREGON CORNER RESTORATION FORM

Section 13 Township 23S Range 8W

COUNTY SURVEYOR
DOUGLAS COUNTY, ORE.

County Douglas Date 01-19-87

Corner Designation

C.N. 1/16 Corner
Section 13



- Condition Report Only
- Not Found
- Renewed
- Unrecorded
- Surveyed In
- Referenced Out

Previous Renewals/Surveys, etc. A 1970 Cadastral Survey by James B. Jelley and a 1986, unapproved, B.L.M. survey by Harvey Wofford.

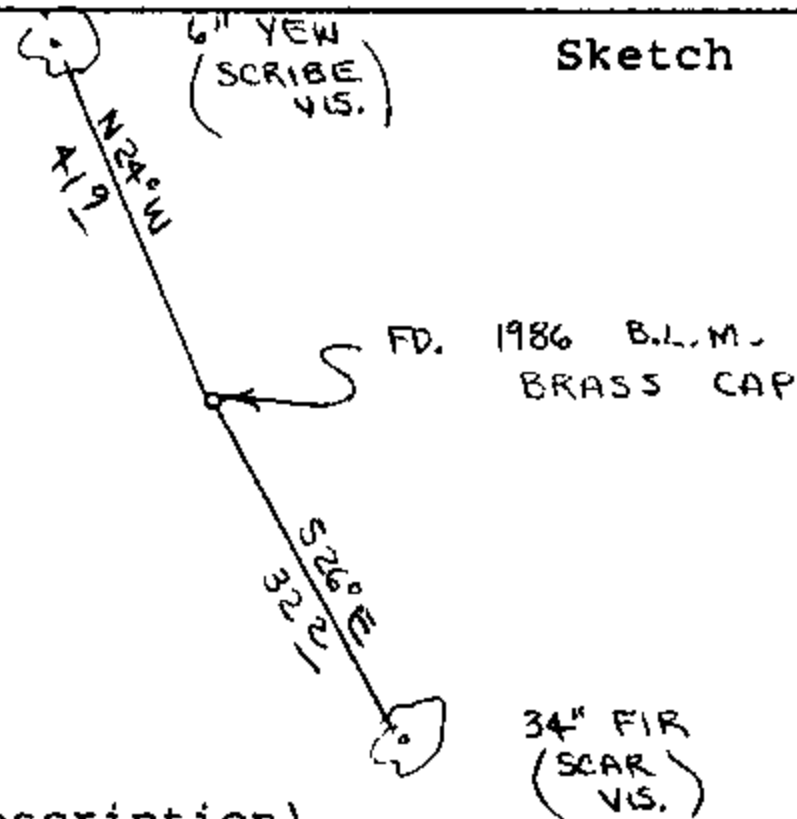
Monument(s) & Accessories Found: (Condition and Source)

Found 1986 B.L.M. Brass Cap set firmly in ground.

6" Yew, N24W, 41.9' (Scribe Vis.), 1986 BT. No record.

34" Fir, S26E, 32.2' (Scar Vis.), 1970 BT. No record.

Monument Detail



Monument Set (Procedures and Description)

New Accessories

Set metal fence post, with survey attention sign attached to, beside brass cap. Painted all B.T.'s red.

Location & Comments

Corner lies in 10 to 15 year old clear cut unit about 200' East of graveled logging road.

Compass Declination 20 1/2

Firm/Agency Roberts Surveying Inc.

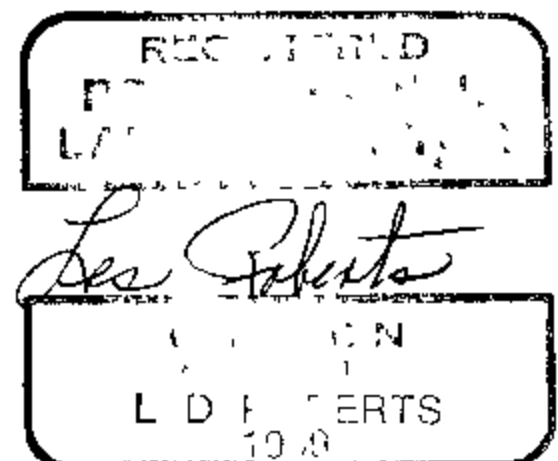
Address 29 West 29th St. Eugene, Oregon 97405

Party Chief Les Roberts

Notes Ted Baker

Witness Jim Metzler

Surveyor's Seal



C.S. File No. 63/46-6c

M103-74

FILED

[Handwritten signature]

APR 10 1987

OREGON CORNER RESTORATION FORM

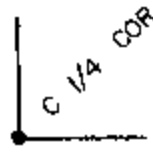
Section 13 Township 23S Range 8W

COUNTY SURVEYOR
DOUGLAS COUNTY, ORE.

County Douglas Date 01-19-87

Corner Designation

Center $\frac{1}{4}$ Corner
Section 13



- Condition Report Only
- Not Found
- Renewed
- Unrecorded
- Surveyed In
- Referenced Out

Previous Renewals/Surveys, etc. A 1970 Cadastral Survey by James E. Jelley and a 1986, unapproved, B.L.M. survey by Harvey Wofford.

Monument(s) & Accessories Found: (Condition and Source)

Found 1986 B.L.M. Brass Cap set firmly in ground.

38" Fir, S74E, 48.2' (Scar Vis.), 1970 BT. No Record.

40" Fir, N36W, 33.1' (Scar Vis.), 1970 BT. No Record.

Monument Detail

40" FIR
(SCAR VIS)



Sketch

FD. 1986 B.L.M.
BRASS CAP

S74°E
48.2'

38" FIR
(SCAR VIS)

Monument Set (Procedures and Description)

New Accessories

Set aluminum fence post, with survey attention sign attached to, beside brass cap. Painted all B.T.'s red.

Location & Comments

Corner lies on small flat in patch of 150 year old green timber. Compass Declination 20 1/2
Firm/Agency Roberts Surveying Inc.

Address 29 West 29th St.

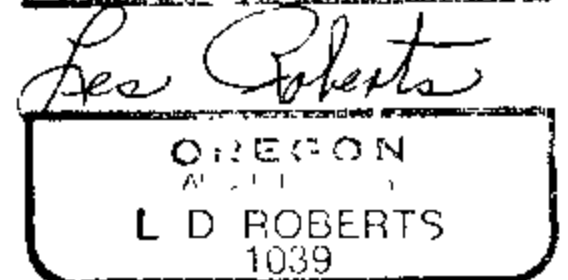
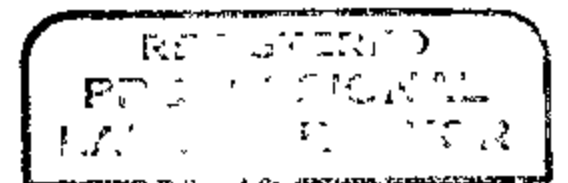
Eugene, Oregon 97405

Party Chief Les Roberts

Notes Ted Baker

Witness Jim Metzler

Surveyor's Seal



M103-74

FILED

APR 10 1987

OREGON CORNER RESTORATION FORM

Section 13 Township 23S Range 8W

County Douglas Date 01-20-87

COUNTY SURVEYOR
DOUGLAS COUNTY, ORE.

Corner Designation

East $\frac{1}{4}$ Corner
Section 13

13 18

- Condition Report Only
- Not Found
- Renewed
- Unrecorded
- Surveyed In
- Referenced Out

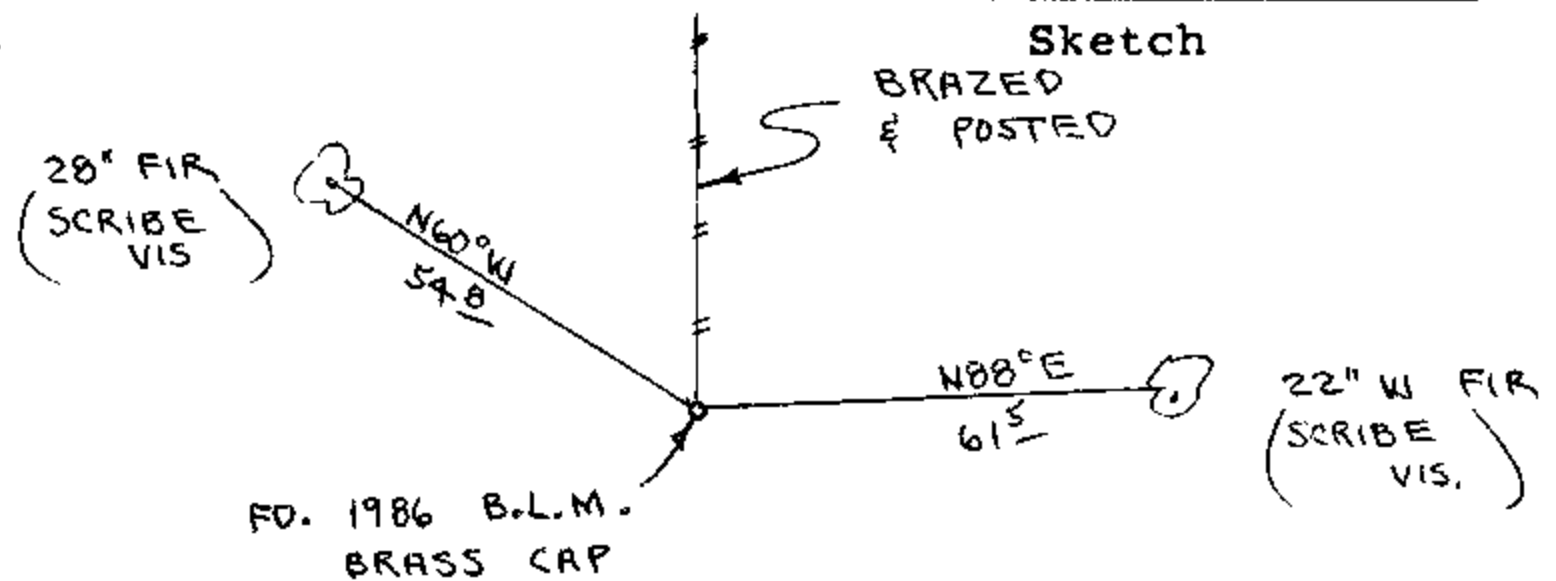
Previous Renewals/Surveys, etc. Original G.L.O. Survey by Armstrong and Hutchinson in 1857. A 1964 B.L.M. Survey by Brooks and Peterson and a 1970 B.L.M. Survey by Jelley. Also a 1986, unapproved, B.L.M. Monument(s) & Accessories Found: (Condition and Source) Survey by Harvey Wofford.

Found 1986 B.L.M. Brass Cap set firmly in ground.

22" W. Fir, N88E, 61.5' (Scribe Vis.), 1964 BT, No Record.

28" Fir, N60W, 54.8' (Scribe Vis.), 1986 BT, No Record.

Monument Detail



Monument Set (Procedures and Description)

New Accessories

Set aluminum fence post, with survey attention sign attached to, beside brass cap. Painted all B.T.'s red.

Location & Comments

Corner lies on East slope about 300' West of Mehl Creek

Compass Declination 20 $\frac{1}{2}$

Firm/Agency Roberts Surveying Inc.

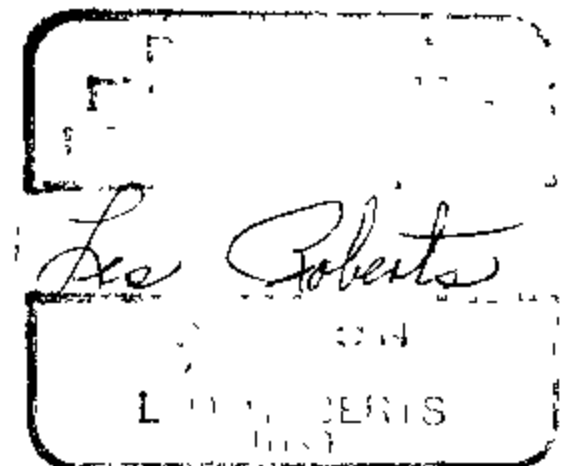
Address 29 West 29th St. Eugene, Oregon 97405

Party Chief Les Roberts

Notes Ted Baker

Witness Jim Metzler

Surveyor's Seal



CS File No. 63/46-6E

M103-74

FILED

AK

APR 10 1987

OREGON CORNER RESTORATION FORM

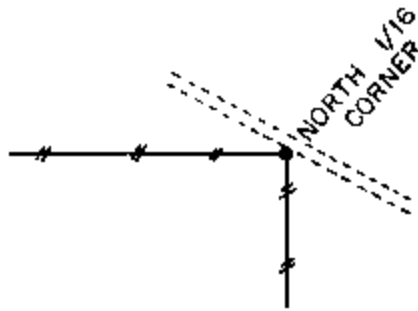
Section 13 Township 23S Range 8W

County Douglas Date 01-22-87

COUNTY SURVEYOR
DOUGLAS COUNTY, ORE.

Corner Designation

North 1/16 Corner
Section 13



- Condition Report Only
- Not Found
- Renewed
- Unrecorded
- Surveyed In
- Referenced Out

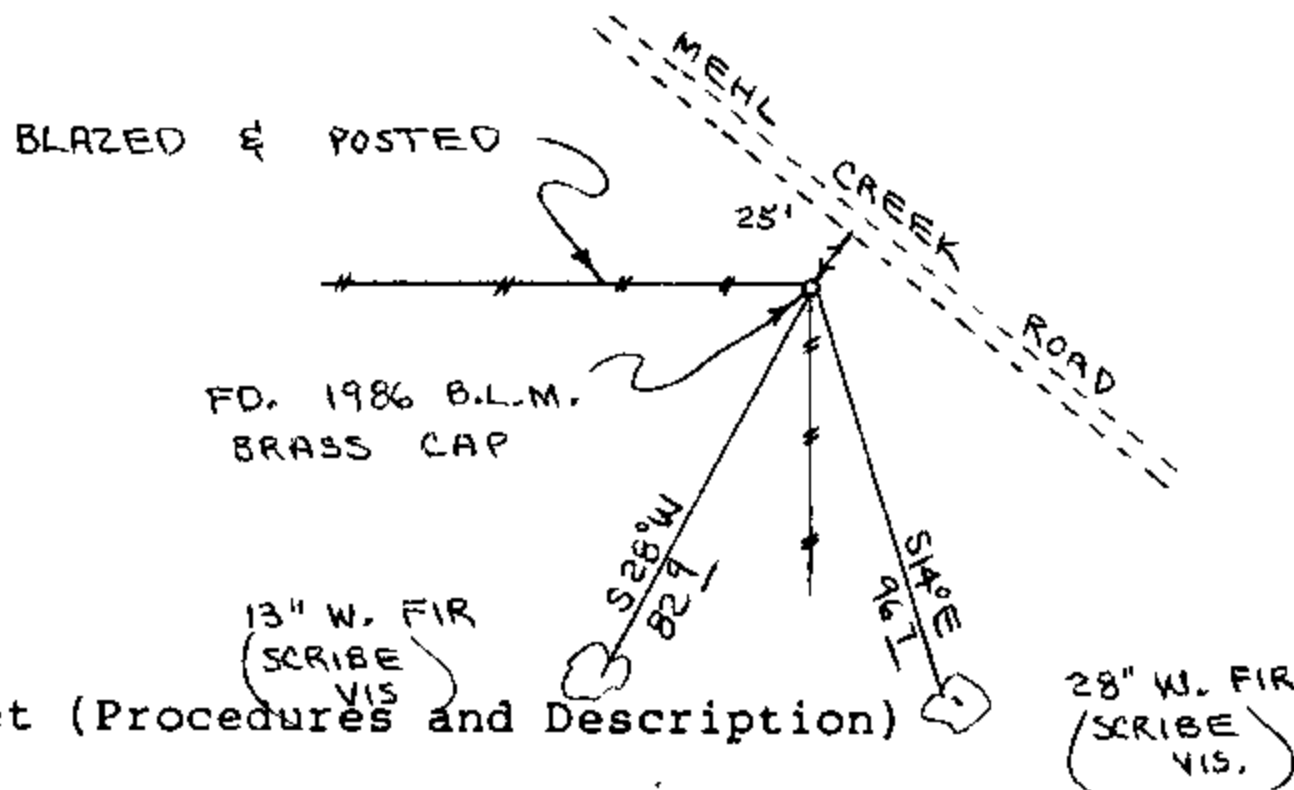
Previous Renewals/Surveys, etc. Original G.L.O. Survey by Armstrong & Hutchinson in 1857. A 1964 B.L.M. Survey by Brooks & Peterson. A 1970 B.L.M. Survey by James Jelley. Also a 1986, unapproved, B.L.M.

Monument(s) & Accessories Found: (Condition and Source)
survey by Harvey Wofford.

Found 1986 B.L.M. Brass Cap set firmly in the ground.
13" W. Fir, S28W, 82.9' (Scribe Vis.), 1986 BT. No Record.
28" W. Fir, S14E, 96.7' (Scribe Vis.), 1994 BT. No Record.

Monument Detail

Sketch



Monument Set (Procedures and Description)

New Accessories

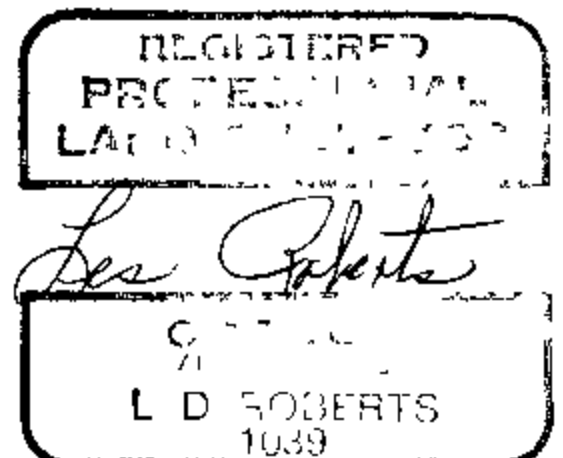
Set aluminum fence post, with survey attention sign attached to, beside brass cap. Painted all B.T.'s red.

Location & Comments

Corner lies about 25' S.W. of Mehl Creek Road.
Compass Declination 20 1/2
Firm/Agency Roberts
Surveying Inc.

Address 29 West 29th St.
Eugene, Oregon 97405
Party Chief Les Roberts
Notes Ted Baker
Witness Jim Metzler

Surveyor's Seal



M103-74

FILED

rk

OREGON CORNER RESTORATION FORM

APR 10 1987

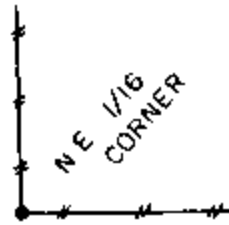
Section 13 Township 23 S Range 8W

COUNTY SURVEYOR
DOUGLAS COUNTY, ORE.

County Douglas Date 01-30-87

Corner Designation

N.E. 1/16 Corner
Section 13



- Condition Report Only
- Not Found
- Renewed
- Unrecorded
- Surveyed In
- Referenced Out

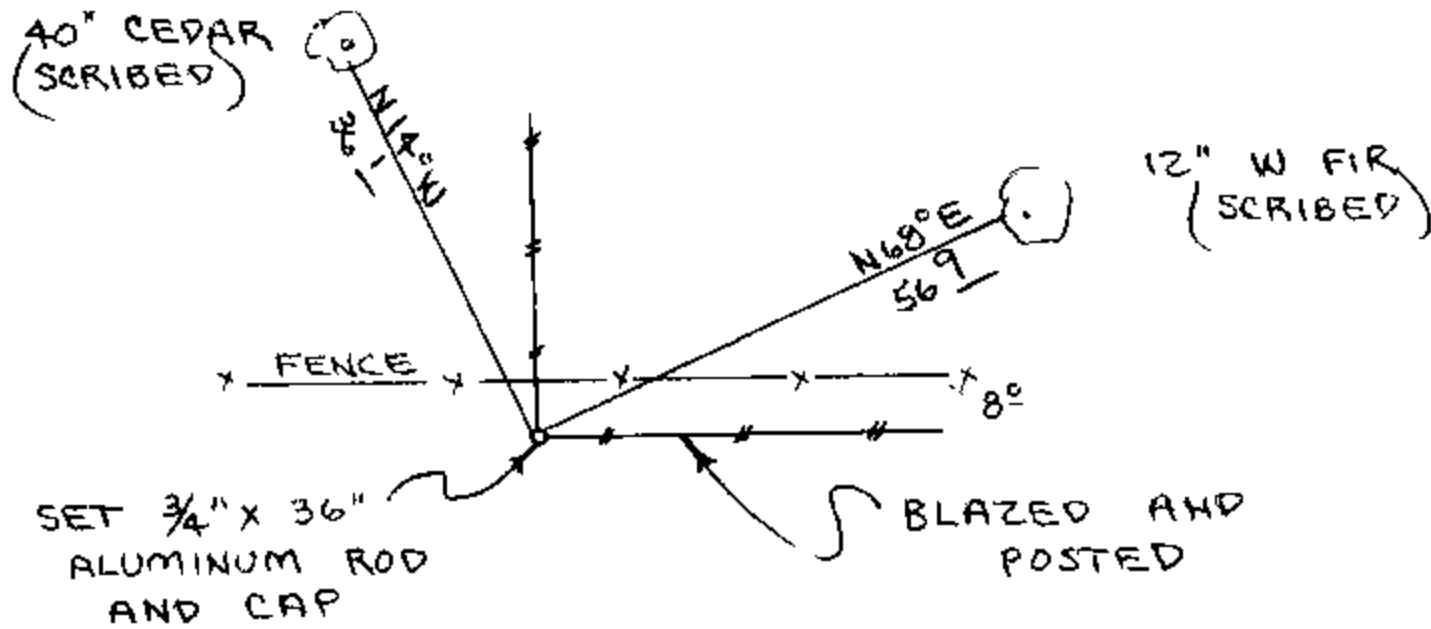
Previous Renewals/Surveys, etc. A 1970 Cadastral survey by James E. Jelley and a 1986, unapproved, B.L.M. survey by Harvey Wofford.

Monument(s) & Accessories Found: (Condition and Source)

No Monuments found.

Monument Detail

Sketch



Monument Set (Procedures and Description)

Set 3/4" x 36" aluminum rod with aluminum cap. Buried purple magnetic marker under 36" rod. Set aluminum fence post, with land monument survey sign attached to, beside aluminum rod.
See filed survey for survey procedures.

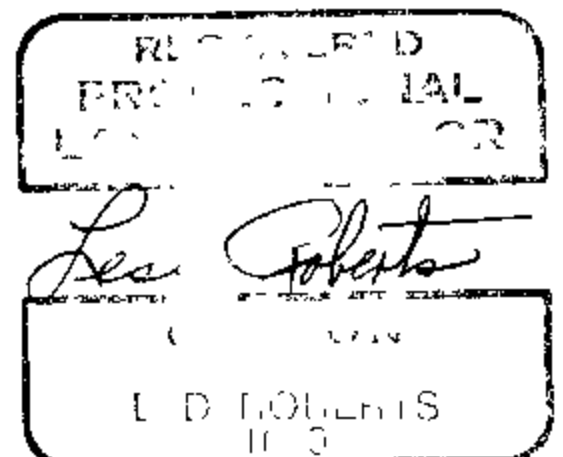
New Accessories

- 12" W. Fir, N68E, 56.9' (Scribed/Painted Red)
- 40" Cedar, N14W, 36.1' (Scribed/Painted Red)

Location & Comments

Surveyor's Seal

Compass Declination 20 1/2
 Firm/Agency Roberts Surveying Inc.
 Address 29 West 29th St.
Eugene, Oregon 97405
 Party Chief Ted Baker
 Notes Ted Baker
 Witness Jim Metzler



M 103-74

FILED

APR 10 1987

OREGON CORNER RESTORATION FORM

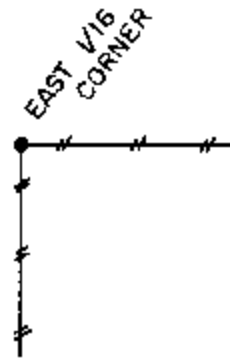
Section 13 Township 23S Range 8W

County Douglas Date 01-28-87

COUNTY SURVEYOR
DOUGLAS COUNTY, ORE.

Corner Designation

East 1/16 Corner
Section 13



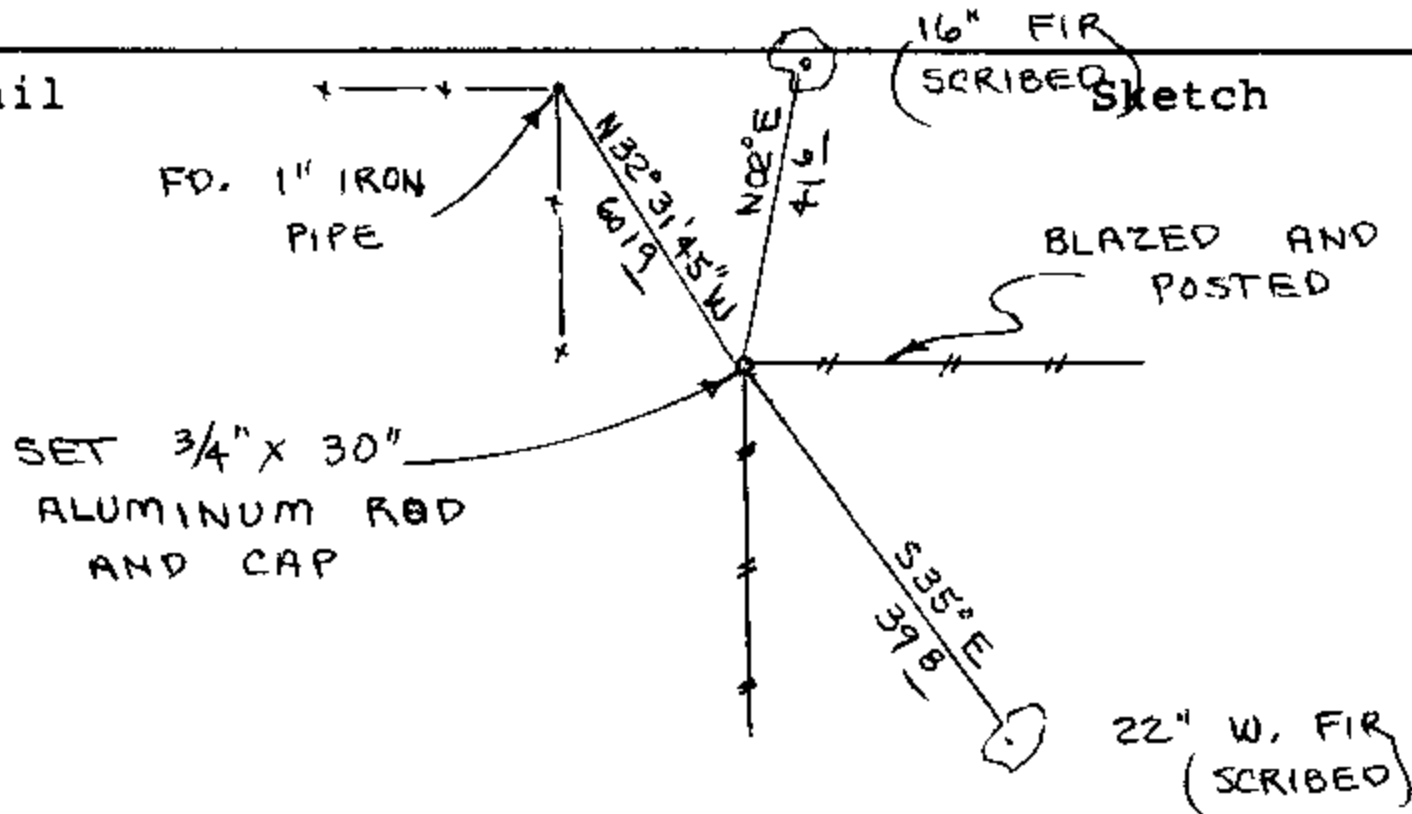
- Condition Report Only
- Not Found
- Renewed
- Unrecorded
- Surveyed In
- Referenced Out

Previous Renewals/Surveys, etc. Original survey by Dennis Hathorn in 1857. 1970 Cadastral survey by James E. Jelley and a 1986, unapproved, E.L.M. survey by Harvey Wofford.

Monument(s) & Accessories Found: (Condition and Source)

No Monuments found.

Monument Detail



Monument Set (Procedures and Description)

Set 3/4" x 30" aluminum rod with aluminum cap. Buried purple magnetic marker under 30" rod. Set aluminum fence post, with land monument survey sign attached to, beside aluminum rod.

See filed survey for survey procedures. Found 1" iron pipe in West-South fence corner. Pipe bears N 32° 31' 45" W, 60.19'

New Accessories

16" Fir, N02E, 41.6' (Scribed/Painted Red)

22" W. Fir, S35E, 39.8' (Scribed/Painted Red)

Location & Comments

Corner lies on slight West slope about 40' East of North-South fence line

Compass Declination 20 1/2

Firm/Agency Roberts Surveying Inc.

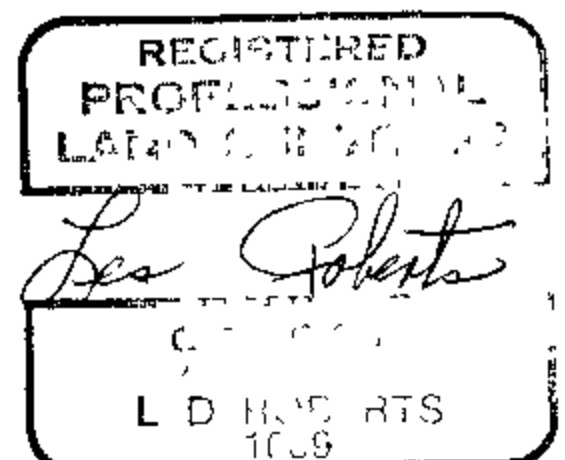
Address 29 West 29th St. Eugene, Oregon 97405

Party Chief Ted Baker

Notes Ted Baker

Witness Jim Metzler

Surveyor's Seal



C.S. File No. 63/46-6h